

extremis®



extremis®

Tools for togetherness



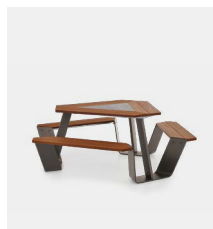
Acacia

8



AMAI

14



Anker

24



Bistro

30



Captain's Chair

38



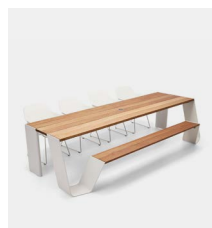
Gargantua

44



Hopper picnic

54



Hopper combo

70



Hopper bench

76



Hopper shade

82



Inumbra

88



Inumbra

96



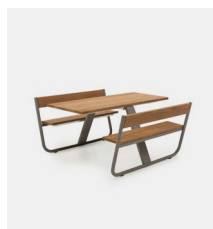
Kosmos

102



Kosmos shade

110



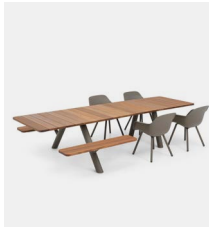
Manille

116



Marina

124



Panigiri 132



Pantagruel 140



Picnik 154



Sensu 162



Sol+Luna 172



Sticks 182



Tiki 190



Virus 200



Walrus 208

Our “tools for togetherness” know no boundaries. Whether you’re creating a cozy garden terrace, a charming sidewalk café or refreshing your office space, each product is designed to bring friends, family or colleagues together in new ways. Explore the versatility of our products to inspire any indoor or outdoor space.







Why on earth

At Extremis, we only start developing an idea if it is both necessary and useful.



Immortal ideas

We aim to inspire the future by changing today's way of thinking.



Lasting materials

We employ only the highest quality materials and cutting-edge processes.



Carefully designed

The best way to make a product last, however, is to make it beautiful. In every aspect.



With positive impact

Designs that have the power to spark meaningful connections and enhance the way we interact with one another.



We strive to create ideas that are loved for their personality, embraced for their quality, and cherished for their impact, as true tools for togetherness.





Acacia

© Design by Dirk Wynants for Extremis, 2018

Turn Acacia to follow the sun and create shadow wherever you want. Just like the African tree it is named after, this shade captures a maximum of sunshine with a minimum surface area.



HENRY VAN
DE VELDE
AWARDS 19
WINNER



GERMAN
DESIGN
AWARD
WINNER
2020

All our designs are original creations and protected by intellectual property rights.

Extremis

→
Instead of closing
the umbrella, simply
remove the canvas and
store it in the bag.



↓
Simply use the handle and
turn Acacia to the sun.



Acacia

After a full day of building treehouses and playing hide and seek, it's time for a break underneath the Acacia shade. On today's menu: candy and ice cream!



This small courtyard by interior architects ©Witblad in the heart of Bruges shows how thoughtful design can make any space shine. The Virus table and Acacia shade bring functionality and style.



Acacia

This eccentric shade is intended to be directed towards the sun to create just as much shade as a 3m parasol would. Just like the African acacia tree that evolved to capture as much sun as

possible with the smallest leaf canopy, Acacia casts shade wherever you like with a relatively small surface area.

Configure me



Types



Acacia
(ø300 x 223 cm)

Accessories & options



Cover (included)



Parasol bases



With Virus

Materials & colors

PU coated polyester



White

Parasol base



Galvanized steel

Powder coated stainless steel pole & tubes



Off white
RAL9002



Verdigris



Reed green
RAL6013



Copper brown
RAL8004





AMAI

© Design by Dirk Wynants for Extremis, 2021

Furniture that is as flexible as your lifestyle: meet AMAi, a true marvel of multifunctionality. Take every moment to new heights with the adjustable tabletop, lights, electricity, a catering station and a sunshade.



GOOD
DESIGN



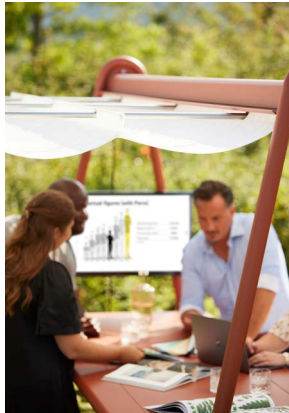
NeoCon
METROPOLISLIKES

All our designs are original creations and protected by intellectual property rights.

Extremis



Time to break free from the four walls of the office! Round up your colleagues and take those meetings outside. With AMAi's height-adjustable tabletop, shade system, and power access, you'll be as productive as ever. Do you sometimes take work outdoors?



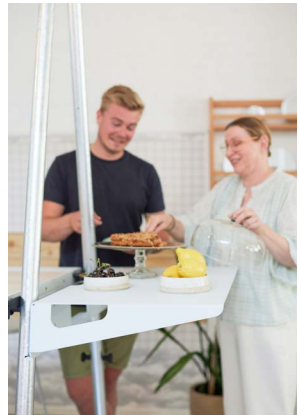
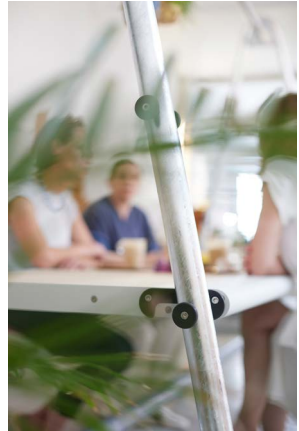
AMAi

An effortless dinner event with friends or a focused brainstorm session with colleagues? AMAi is a landing place for togetherness, adapting instantly to every new experience.



Extremis

This trendy and laid-back coffee shop is the perfect setting for the AMAi table in galvanized steel. An ideal spot to enjoy a latte with some home-made cake! The add-on table creates some extra space alongside the tabletop. This add-on table pins onto the side caps of the frame and can be used both in the standard and high position.





Extremis



It's time to steal the show! With the perfect height to prepare meals and drinks, you have an outdoor cooking corner to share delicious togetherness with friends. Share a glass at the bar, throw together a meal and eat at the high or low table. At daytime or under the night sky, AMAi is a table without limits.





→
2 fast charging (60W)
USB-C ports.



The frame overhead can
have an optional LED light
and 2 fast charging USB-C
ports to offer connectivity
at all times.

AMAI

AMAI is the flexibility that you desire, all the time, indoors and outdoors. Two A-shaped side frames provide a solid construction. In between these frames, you can position the tabletop into two

heights: standard or high. Thanks to the innovative design, even a single person can smoothly slide the tabletop from 'sitting height' into 'standing height' and vice versa.

Configure me



Types



AMAI
(With or without lighting & charging module)
(304 x 113 x 230 cm)



AMAI catering station
(With or without lighting & charging module)
(304 x 113 x 230 cm)



Bench
(249 x 40 x 51 cm)



HiLo bench - short/long
(116/250 x 47 x 74 cm)

Accessories & options



Extension module



Leveling feet



Add-on table



Shades



Screenholder



Bar add-on
(Catering station only)



Lighting & charging
module



Wheelchair accessible

Materials & colors

A-frame & top profile



Black
RAL9005



Beach beige
RAL1019



Off white
RAL9002



Copper brown
RAL8004



Galvanized steel

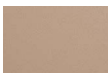


Galvanized steel

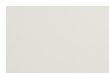
Footrest & shade structure



Black
RAL9005



Beach beige
RAL1019



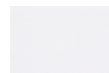
Off white
RAL9002



Copper brown
RAL8004



Hellwood
(Centerplate)

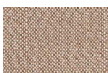


White hi-tech
polyester

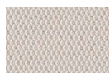
Tabletop centerplate & tabletop side profiles



Grey chiné



Coconut



Marble

Sunbrella® cushions (HiLo bench backrest)





Anker

© Design by Dirk Wynants for Extremis, 2015

Sailors drop the anchor when they have reached a place where they want to stay. Sit down around Anker and touch base with your friends or family. Anchoring is about getting a grip on what is really important in life and disconnecting a bit from the daily rush at work.





Anker

Take some time with the family to wind down at Anker and disconnect from the daily rush of life. Strong and durable like a real anchor, this wooden picnic table can stay outside all year long without losing its strength.



→
Blending in with the soft earthy colors of its surroundings, Anker comfortably seats six people.



Anker

The compact 6-seater picnic table encourages one-on-one conversations, but its appearance invites people to come on board. Just slide in at the sides of the benches, without having to lift your

leg. Anker is very robust and weather resistant. Configure Anker as you wish: choose galvanized steel or a powder coated finish, combined with wooden tabletop and benches.

Configure me



Types



Anker
(ø217 x 74 cm)

Accessories & options



Floor fastening



Connection piece for shade



Charging module



With Inumbrina medium

Materials & colors

Tabletop & benches



Iroko



Hellwood

Frame & legs



Black
RAL9005



Earth



Off white
RAL9002



Verdigris



Galvanized steel

Tabletop centerplate



Black
RAL9005



Earth



Off white
RAL9002



Verdigris





Bistroo

© Design by Dirk Wynants for Extremis, 2018

Love is about looking in the same direction. Instead of sitting opposite each other, you sit side by side at the Bistroo, observing and commenting the world as it's passing by.



All our designs are original creations and protected by intellectual property rights.



Bistroo



The homeowners of this lovely house aspired for their home to be an idyllic, minimalist sanctuary in the center of Melbourne, Australia.



Under the blossoming branches of this 100-year-old rose bush, the loveliest breakfast spot reveals itself. Dream away of what the day yet has to offer just with the two of you at the Bistroo table.

Extremis

→
Bistroo is stackable up
to 4 pieces.



Bistroo



With views over the Japanese mountains of Shizuoka, this traditional arts and crafts school placed some Bistroos in the courtyard to take a peaceful break. Seated shoulder to shoulder, the pupils see the world passing by from the same point of view.



Set against the sleek facade of this Eddy François-designed home, the Bistroo in Pistache creates an inviting retreat—a perfect spot to bask in the sun and lose yourself in a good book.



Bistroo

When you see the Bistroo you will immediately realise what the double 'oo' is all about. The rounded backrests provide support as you sit side by side, watching the world go by. Three legs, two seats

and one tabletop are the basis of this innovative concept. This design makes it perfectly stable on any surface, and it is faster to stack and lock away than individual tables and chairs.

Configure me



Types



Bistroo
(116 x 94 x 88 cm)

Accessories & options



Table tray



Cushions



Floor fastening



Charging module

Materials & colors

Powder coated tabletop, seats, legs & backrest



Off white
RAL9002



Verdigris



Reed green
RAL6013



Copper brown
RAL8004



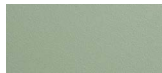
Cosmic cream
RAL1015



Cobalt blue
RAL5013



Sun yellow
RAL1032



Pistache
RAL6021

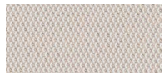
Sunbrella® cushions



Grey chiné



Dark taupe



Marble



Charcoal



Leaf green



Indigo



Loto





Captain's Chair

© Design by Metrica for Extremis, 2013

The Captain's Chair owes its name to its shape, which draws inspiration from yacht helm chairs. It's a shell offering unrivalled seating comfort, even for large or tall people.

Extremis

→
Optional quilted
cushion.



←
Water drain & ventilation
hole. Doubles as a cut-out
for a form-fitting cushion.

Captain's Chair

→
The Pantagruel high tables
and Captain's high sliding
Chairs furnish this cozy
courtyard in Venice, Italy.

↓
Fixed benches or a
Captain's Chair? At the
Marina combo, you always
gather gracefully.



Extremis

The legs of the Captain's
Pipe Chair perfectly
complement the organic,
round shapes of the
Panigiri table.



Captain's Chair

Its wide shell offers the ultimate in seating pleasure, even for large or tall people. Thanks to this variety of frames, the chair can be used in all kinds of environments: public spaces,

private homes, indoors, outdoors, etc. It is perfectly suited for terraces, patios, hotels, restaurants, pubs, offices, dining rooms, meeting rooms, bars and lounges, to name but a few possibilities.

Configure me



Types



Sliding
(62 x 63 x 82 cm)



High sliding
(60 x 63 x 114 cm)



Pipe
(61 x 63 x 82 cm)

Accessories



Cushions



Quilted cushions

Combine



With Marina combo,
(high) table & double
desk



With Panigiri combo
/ table



With Hopper combo

Materials & colors

Polypropylene shell



Black
RAL9005



Earth



Beach beige
RAL1019



Off white
RAL9002



Verdigris



Reed green
RAL6013

Sliding legs



Black
RAL9005



Earth



Beach beige
RAL1019



Off white
RAL9002



Verdigris



Reed green
RAL6013



Copper brown
RAL8004



**Galvanized
steel**

Pipe legs & high sliding legs



Black
RAL9005



Earth



Beach beige
RAL1019



Off white
RAL9002



Verdigris
(high sliding
legs only)

Sunbrella® cushions



Grey chiné



Dark taupe



Coconut
(Quilted)



Marble
(Quilted)



Charcoal
(Quilted)



Leaf green



Rust





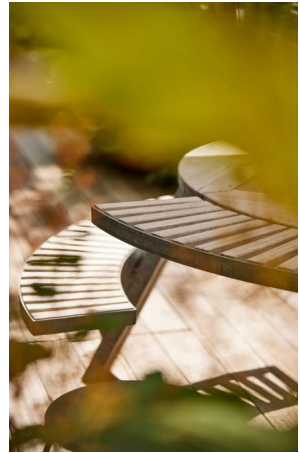
Gargantua

© Design by Dirk Wynants for Extremis, 1994

Back in 1994, Dirk Wynants wanted to create a table where children could comfortably sit at the same height as the adults to enable better communication. He created the perfect family table, ready to withstand the elements, and at the same time a true design icon.

Extremis

The Gargantua table shows how aging gracefully is not only a matter of design, but also of material choice. The galvanized legs prove to be a super durable material that never rusts, while the exposure to sun and rain has caused the wooden tabletop and benches to receive a grayish tone that now perfectly suit the weathered floor.



Gargantua



The aged wood, clean lines and galvanized steel of the Gargantua picnic table complement the sleek silhouette of this minimal private poolhouse.



Get ready for a blizzard! Gargantua doesn't mind being buried under meters of snow in the mountains of Champéry, Switzerland, thanks to the use of super-durable wood and steel.



Coworkers having a lunch break at the Transavia transport building in Schiphol/ the Netherlands.

Extremis



The finest garden of Schilde, near Antwerp, can be found at this home designed by architect Eddy François. Sober lines and clever designs weave the attractive home seamlessly into the greenery. The round Gargantua table with adjustable benches has provided a place for homeowner and interior photographer Mr. Frank to spend his outdoor moments for many years.





Extremis

→
The bench height
can be adjusted to
suit social or family
circumstances.



↓
In the highest position the
benches become a tabletop
extension and provide space
for 12 people.



Gargantua

The galvanized steel of the Gargantua matches with the metal parapets of this penthouse terrace.



→
The owners of this garden in Moorsele, Belgium, testify, "the Gargantua table is the center of the festivities at every gathering. Whether we just want to enjoy the garden with our family or we invite 12 people, the picnic table attracts everyone, young and old, even up to four generations at a time."



Gargantua

Gargantua is the original 'tool for togetherness.' Born from the notion that gathering around a table should be accessible for all, form certainly followed function in more ways than one. The adjustable benches

ensure that small children sit at the same eye level as adults and the tabletop is accessible by wheelchair. Gargantua is the ultimate symbol of inclusivity. Provides space for 8 - 12 people.

Configure me



Types



Gargantua
(ø231 x 75 cm)

4 bench positions



Adults



Young adults



Children



XXL tabletop
For (wheel) chairs
(Tabletop ø201 cm)



Wheelchair accessible

Accessories & options



Cushions
(Set of 4 pcs)



Backrest
(Set of 2 pcs)



Floor fastening



Various parasols



Charging module

Materials & colors

Tabletop & benches



Iroko

Frame, legs & backrest



Galvanized steel

Tabletop centerplate

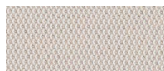


Stainless steel

Sunbrella® cushions



Grey chiné



Marble





Hopper picnic

© Design by Dirk Wynants for Extremis, 2010

At a lively beer festival, elegance is almost certainly not the main concern, but this hasn't stopped us from trying to improve access to the classic picnic table. We managed to incorporate more space at the sides to get in.



Registered in the U.S. Patent and Trademark Office.

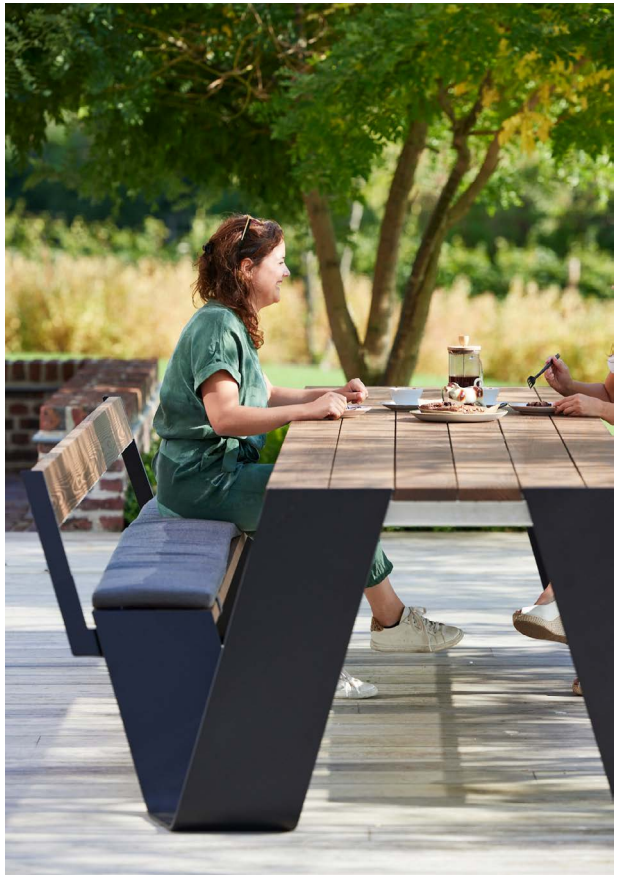
All our designs are original creations and protected by intellectual property rights.



Hopper picnic



As fall starts to set in, Hopper picnic awaits with coffee and cake. Take a seat on the benches, equipped with extra comfort thanks to the backrest and cushions.



←

This Ghent townhouse by Baeyens & Beck Architecten is a masterpiece, and the garden is no exception. The outdoor space features a sleek, minimalist black-and-white theme that extends from inside to out, creating a cohesive and sophisticated look.

Extremis

Without taking up any extra space around the table, the broad canopy of the Hopper shade offers this family a refreshing spot to enjoy lunch at these holiday homes in Les Issambres, France.



Hopper picnic



The Hopper picnic beautifully matches this architectural villa in Australia.





Hopper picnic AA



The Hopper picnic AA is a real eye-catcher. The slanted legs are easy on the eye and make it effortless to get in and out.



←

In the summer vacation, when the parents are off to work, the garden of this magnificent house by Govaert & Vanhoutte architects becomes a realm of children.



Hopper picnic

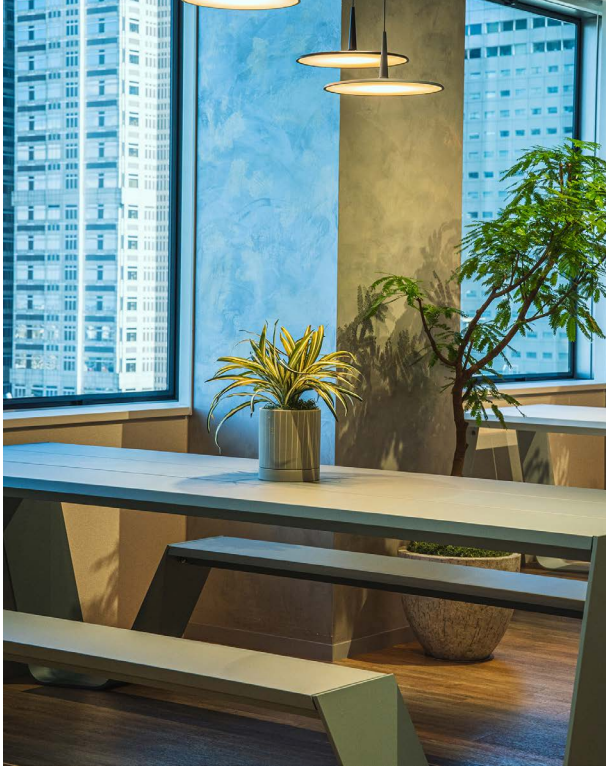


In the park surrounding the Maersk Tower in Copenhagen, Denmark, Hopper picnic tables offer a natural escape for passers-by. A spot to take lunch outdoors, a meeting with colleagues or a Sunday picnic with family? There are enough tables for all!



At the HQ of Afas Software in the Netherlands, the employees are enjoying a break on one of the many outdoor terraces.

Extremis



The L'Oréal headquarters in Japan are a place where beauty is born and where customers, suppliers and employees meet. With views on the Shinjuku Chuo Park with its blossoming cherry trees, people can take themselves away from work to feel refreshed. The Extremis Hopper picnic AA add to the feeling of nature while fitting perfectly in this "Beauty Valley".



Hopper picnic AA



Pass the bread. Hug your friends. Be Merry! Togetherness is the true essence of the holiday season, it's only fitting to spend in with good people making new memories to cherish.



Extremis

The Hopper picnic table seamlessly complements the wooden planks of this cozy outdoor terrace.



Hopper picnic



Following the tones of
the emerald North Sea,
this Hopper picnic with
Verdigris legs has found its
natural habitat.

Hopper picnic wood

The four pass-through zones make it easy to get in and out of Hopper without having to lift your leg over the bench or disturb your table companions. Its slanted legs and tabletop edges are a clear reference to the hop poles

that are so characteristic of the Westhoek region. If you turn around, you can use the tabletop as a comfortable backrest.

Configure me



Types



Hopper picnic
(178/238/298/358 x 163 x 74 cm)



With Hopper shade

Accessories & options



Backrest



Cushions



Legs with anchoring
holes



Charging module



Wheelchair
accessibility options

Materials & colors

Tabletop, benches & backrest



Iroko



Hellwood

Frame



Galvanized steel

Legs & backrest supports



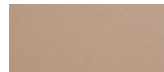
Galvanized steel



Black
RAL9005



Earth



Beach beige
RAL1019



Off white
RAL9002



Verdigris



Reed green
RAL6013



Copper brown
RAL8004

Hopper picnic AA

Hopper AA (All Aluminum) is a mono-material picnic table with a sleek visual aesthetic, but designed with functionality in mind. Four pass-through zones at the ends eliminate the need to scramble

over the benches to reach the table. A picnic table at heart, this piece adds a playful yet architectural element to any indoor space or outdoor terrace.

Configure me



Types



Hopper picnic AA
(238/298/358 x 163 x 74 cm)



With Hopper shade

Accessories & options



Backrest



Cushions



Floor fastening



Charging module



Wheelchair
accessibility options

Materials & colors

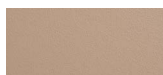
Tabletop, benches, legs & backrest



Black
RAL9005



Earth



Beach beige
RAL1019



Off white
RAL9002



Verdigris



Reed green
RAL6013



Copper brown
RAL8004

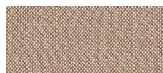
Sunbrella® cushions (for wood & AA version)



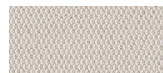
Grey chiné



Dark taupe



Coconut



Marble



Charcoal



Leaf green



Rust





Hopper combo

© Design by Dirk Wynants for Extremis, 2010

The Hopper combo combines the best of two worlds: a bench on one side and chairs on the other. The attached bench allows you to slide in from the sides, without having to lift your legs. The open side offers flexibility and welcomes wheelchairs or child seats at any time.

Registered in the U.S. Patent and Trademark Office.

All our designs are original creations and protected by intellectual property rights.



What's your preferred seat? A shared bench that creates an exceptional atmosphere or a separate chair that offers the flexibility of personal space? At the Hopper combo table everybody is free to choose their favorite side.



Hopper combo wood

The Hopper combo combines the best of two worlds: a bench on one side and chairs on the other. Grab a few Captain's Chairs to add comfort. The attached bench allows you to slide in from the sides, without having to

lift your legs. The open side offers flexibility and welcomes wheelchairs or child seats at any time. Pick your favorite hardwood for the surface and a powder coated or galvanized finish for the legs.

Configure me



Types



Hopper combo
(178/238/298/358 x 123 x 74 cm)

Combine



With Captain's Chairs

Accessories & options



Backrest



Cushions



Charging module



Wheelchair accessible

Materials & colors

Tabletop, bench & backrest



Iroko



Hellwood

Frame



Galvanized steel

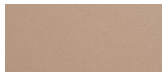
Legs & backrest supports



Black
RAL9005



Earth



Beach beige
RAL1019



Off white
RAL9002



Verdigris



Reed green
RAL6013



Copper brown
RAL8004

Hopper combo AA

With a bench on one side and chairs on the other, this table suits everybody's preferences. Slip in from the sides on the attached benches, or grab a Captain's Chair for a different seating

spot. This mono-material table offers more flexibility thanks to the open sides that welcome wheelchairs or child seats at any time. Available in several colors, Hopper combo AA fits any setting.

Configure me



Types



Hopper combo AA
(238 / 298 / 358 x 123 x 74 cm)

Combine



With Captain's Chairs

Accessories & options



Backrest



Cushions



Charging module



Wheelchair accessible

Materials & colors

Tabletop, bench, legs & backrest



Black
RAL9005



Earth



Beach beige
RAL1019



Off white
RAL9002



Verdigris



Reed green
RAL6013



Copper brown
RAL8004

Sunbrella® cushions (for wood & AA version)



Grey chiné



Dark taupe



Coconut



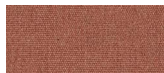
Marble



Charcoal



Leaf green



Rust





Hopper bench

© Design by Dirk Wynants for Extremis, 2010

A quick change of scenery? This versatile bench can be used in more than one way. Take a seat on the bench or turn around to the opposite direction - the backrest now doubles as a tabletop. This design adds comfort to each street, rooftop, garden or balcony.

Registered in the U.S. Patent and Trademark Office.

All our designs are original creations and protected by intellectual property rights.

Extremis

In 2021, the town of Rockford, Michigan closed part of its main street for a few months to create a public gathering space. After seeing how the main street quickly became a bustling place for families and friends, boosting the local businesses as well, the city has made a long-term investment in togetherness by placing Hopper benches along the walkways to bring people together in the public space.



Hopper bench



To create an attractive and lively urban area, Okayama city in Japan has placed 30 Hopper benches along the main street. By shifting from a 'car-centered' to a 'people-first' area, the city has created a spacious area that is fun to walk along. Now, people from all ages feel comfortable using the public space that has shifted from a parking space into a meeting area.



Hopper bench wood

In streetscapes and squares, gardens or balconies, Hopper bench suits any location. This multi-functional design can be used in more ways than a traditional city bench. The attached legs allow you to slide in from

the sides and sit down with a backrest. And the top surface doubles as a tabletop when facing the opposite direction. The versatility of this design allows for a quick change of scenery while adding comfort along the way.

Configure me



Types



Hopper bench
(238/298 x 68 x 74 cm)

Accessories & options



Stabilizing support



Wheelchair accessible

Materials & colors

Tabletop & bench



Iroko



Hellwood

Frame



Galvanized steel

Legs & stabilizing support



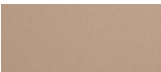
Galvanized steel



Black
RAL9005



Earth



Beach beige
RAL1019



Off white
RAL9002



Verdigris



Reed green
RAL6013



Copper brown
RAL8004

Hopper bench AA

This bench can really be used anywhere, the streetscape, in a park, on a balcony or in public spaces... Sit on the bench leaning against the backrest or hop onto the tabletop for a higher perspective. Tired of your

view? Turn around to use it as a table-seat combination. The robust materials can withstand more than one knock, and the natural colors give a timeless look that also stands the test of time esthetically.

Configure me

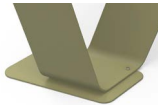


Types



Hopper bench AA
(238 / 298 x 68 x 74 cm)

Accessories & options



Stabilizing support



Wheelchair accessible

Materials & colors

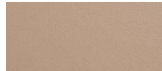
Tabletop, bench, legs & stabilizing support



Black
RAL9005



Earth



Beach beige
RAL1019



Off white
RAL9002



Verdigris



Reed green
RAL6013



Copper brown
RAL8004





Hopper shade

© Design by Dirk Wynants for Extremis, 2010

Being based in the only hops region in Belgium, we've let the many hop gardens that dominate the landscape inspire our designs. Mimicking the hop fields, the Hopper shade has slanted poles that fold the canopy in an esthetically pleasing way.

Extremis

In front of Japan's SAGA Arena, Hopper tables with Hopper shades line the bustling pedestrian deck, offering a welcoming spot to pause. Whether for coffee or lunch, these shaded tables turn every visit into a moment of discovery.



→
With the Hopper shade, you're safe: protected from the intense midday sun, sheltered from a passing rain shower, and cocooned in a warm glow during long summer evenings.





This garden in Grand Rapids, Michigan, USA, looks like a winter wonderland, straight from a fairytale.

Hopper shade

In the opened and closed positions, Hopper shade echoes the lines of the Hopper design. It opens and closes effortlessly, thanks to an internal spring mechanism that takes up no extra space

beside the table. This foldable canopy creates ample shade for everyone in a simple, aesthetically pleasing way.

Configure me



Types



Hopper shade
(256/316/376 x 268 x 211 cm)

Accessories & options



Assembly to Hopper legs



Assembly under legs



Floor fastening



Concrete base



Cover (included)



With Hopper picnic



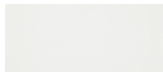
With Hopper picnic AA

Materials & colors

High-tech polyester fabric



Grey taupe



White

Poles



Stainless steel





Inumbra

© Design by Dirk Wynants for Extremis, 2002

The classic parasol has become so familiar that hardly anyone would stop to consider how it could be redesigned. Inumbra is the result of improving every single aspect a parasol has.



All our designs are original creations and protected by intellectual property rights.





At Nagoya University of Commerce & Business, Pantagruel picnic tables paired with taupe Inumbra parasols create the perfect spot for study breaks and brainstorming. Blending seamlessly with the wooden terrace, they offer both shade and style.



Concrete villa with impressive patio.



The Gargantua or Pantagruel table serves as a parasol base. No pole to cramp your legroom.



The Inumbra parasol, with its Taupe canopy and Beach beige pole, pairs perfectly with Pantagruel in matching Beach beige, creating a sleek, monochrome aesthetic.

Inumbra

This all-black Inumbra shade is a statement piece with some very nice extra's. While the black canvas doesn't have any dangling parts hanging above your head, it also doesn't easily show 'natural droppings'. The black pole fits into the tabletop, leaving all the space underneath for your legs.



Pantagruel also serves as a parasol base. So there's no pole cramping your legroom!



Inumbra

Inumbra provides protection with a minimalist look and no technical parts on view. Opens and closes easily with a separate handle. Inumbra has been submitted to wind-tunnel testing at the Von

Karman Institute. Although the parasol can withstand wind speeds of up to 8 on the Beaufort scale, it is of course advisable to close it sooner (from wind speed 6 as a rule of thumb).

Configure me



Types



Inumbra medium
(ø350 x 274 cm)



Inumbra large
(ø400 x 290 cm)

Accessories & options



Cover (included)



Floor fastening



Concrete base



Concrete wheel base



Connection piece for
Gargantua & Pantagruel



With Gargantua



With Pantagruel picnic

Materials & colors

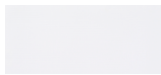
High-tech polyester fabric



Black



Taupe



White

Pole



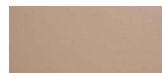
Stainless steel
(Medium & Large)



Black (RAL9005)
(Large only)



Earth
(Large only)



Beach beige (RAL1019)
(Large only)



Off white (RAL9002)
(Large only)





Inumbrina

© Design by Dirk Wynants for Extremis, 2009

Inumbrina is a lighter version of Inumbra, but offers the same advantages: it has the same innovative beauty, and its flat design also makes it very wind resistant.

Extremis

→
Inumbrina opens with an
innovative pulley system;
with a simple rope you
raise the curtain and
create shadow.





The beautiful terrace of the PWC offices in Lucerne, Switzerland, makes the most of the view across the old town and offers outdoor space for informal gatherings, work or meetings.



Let's have some (iced) tea at Mr Ito's garden in Nagano, Japan.



Inumbrina

The major difference between Inumbrina and Inumbrina lies in how they are operated. When converting to a thinner and lighter central pole, the challenge was to replace the handle and spindle sys-

tem. Our technical team came up with an ingenious pulley and rope system. Opening and closing the parasol with a rope turns out to be really easy, and even faster! Cover included.

Configure me



Types



Inumbrina medium
(ø320 x 251 cm)



Inumbrina large
(ø380 x 279 cm)

Accessories & options



Floor fastening
(Medium & Large)



Concrete base
(Large)



Concrete wheel base
(Large)



Parasol bases
(Medium)



Connection piece for
Gargantua & Pantagruel



With Gargantua
(Large)



With Pantagruel picnic
(Large)



With Anker
(Medium)



Cover (included)

Materials & colors

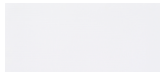
High-tech polyester fabric



Black



Taupe



White

Pole



Stainless steel





Kosmos

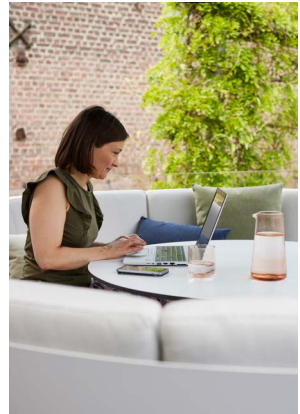
© Design by Dirk Wynants for Extremis, 2008

Kosmos is inspired by a yachts' cockpit: "When space is limited, like on a boat, we need to be more creative." Kosmos is the alternative to a combination of table, chairs, lounge chairs, sun protection, and so on. All functionalities combined in one!



Extremis

Kosmos is the perfect all-in-one piece of furniture. Working outside or lounging in the sun, you choose!



→
City rooftop terrace by
landscape architect 'De
Telder Tuinen', Ghent.



Extremis

→
Convert the Kosmos
into a lounge bed by
setting the adjustable
table to its lowest
position.



Kosmos



A moment to put your feet up or a cushy chat? Kosmos is a tiny world where all is possible! The black coated shell combines perfectly with the charcoal cushions, an elegant marriage with the architecture of this residence.





Kosmos

Kosmos has a round shape for more intense conversations and cosier cuddling at night. At its lowest position, the optional adjustable table offers a completely flat surface, transforming

Kosmos into a giant lounger. This multi-purpose set takes you right through the day – from breakfast to sunbathing – without stuffing your roof terrace full of furniture.

Configure me



Types



8-seater
(ø261 x 74 cm)



3-seater
(251 x 95 x 74 cm)

Accessories & options



Height adjustable table



Cover



With Kosmos shade

Materials & colors

Shell



Black
RAL9005



Earth



Off white
RAL9002

Sunbrella® cushions



Grey chiné



Dark taupe



Marble





Kosmos shade

© Design by Dirk Wynants for Extremis, 2008

We wanted an umbrella that did not stand in the way when it was closed. The original and patented innovation is that it simply opens and closes horizontally like a fan... Or a bird's wings. Design by nature!







Creating elegant shade to your pool sofa? The Kosmos square shade is a freestanding umbrella that supports a clean and balanced look while adding ample shade.



Idyllic pontoon, Lake Lucerne / Switzerland.

Kosmos shade

Kosmos shade is an ingenious design that opens horizontally like a fan, offering excellent wind resistance (wind force 6 on the Beaufort scale). It hangs low enough to provide lots of shade,

and is perfect for placing next to the Kosmos table and seat combination or any other furniture. Hidden magnets keep the shade open.

Configure me



Types



Round shade
(ø327 x 200/215 cm)



Square shade
(339 x 327 x 200/215 cm)

Accessories & options



Floor fastening



Concrete base



Concrete wheel base



With Kosmos 8-seater



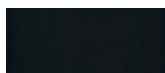
LED-light
(Warm white)



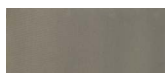
Cover (included)

Materials & colors

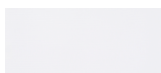
High-tech polyester fabric



Black
(Round shade only)



Taupe
(Round shade only)



White

Pole



Stainless steel





Manille

© Design by Dirk Wynants for Extremis, 2023

From a cozy setting of four ideal for cocooning to a sprawling table for a large group, Manille is sure to pull the right card with outdoor lovers across the globe.



All our designs are original creations and protected by intellectual property rights.



Manille



The Manille fixed shade option is perfect for places where convenience is key. With its open gable roof shape, it ensures you're always protected from the sun and rain, without the need to close or store it away.

Extremis



You can opt to create islands of separate Manille tables or you can link multiple tables seamlessly, thanks to this coupling piece.

Manille

Manille transforms into a cozy cocoon with a shade system effortlessly sliding into the backrests, offering sun protection and creating a charming outdoor retreat.



On this small terrace by the swimming pond, Manille still allows easy access to all four seats. Its compact design makes it perfect for small urban gardens or inviting corners in more expansive landscapes.



Manille

Manille is a perfect blend of practicality and joy. Designed as a table-bench formation, this table comfortably accommodates up to four people, while the head of the table is reserved

for wheelchair users - making Manille an inclusive and accessible table. With a parasol system simply sliding into the backrests, Manille effortlessly becomes a cosy cocoon, protected from the sun.

Configure me



Types



Manille
(144 x 177 x 74 cm)



With soft shade
(171 x 245 x 187 cm)

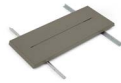


With soft shade
(172 x 241 x 216 cm)

Accessories & options



Connection piece
(Wood)



Connection piece
(Powder coated)



Floor fastening



Wheelchair accessible

Materials & colors

Tabletop & benches



Hellwood



Frame



Galvanized steel

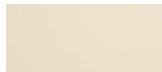
Legs, connection piece & fixed shade structure



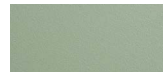
Earth



Copper brown
RAL8004

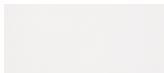


Cosmic cream
RAL1015



Pistache
RAL6021

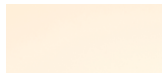
Soft shade



White
(Fabric)



Stainless steel
(Poles)



Light ivory
(Fabric)

Fixed shade





Marina

© Design by Metrica for Extremis, 2012

This particular design once again shows the 'Tools for Togetherness' philosophy of Extremis. The seemingly endless table is perfect for entertaining large groups of guests, friends and family.



All our designs are original creations and protected by intellectual property rights.



The reed green Marina picnic is the preferred table for an outdoor lunch.

Marina

This Marina combo set with matching Captain's Chairs integrates effortlessly into a natural landscape or urban setting.



Extremis

→
Add cushions for
extra soft comfort.



Marina

The fixed benches or Captain's Chairs? At the Marina combo, you always gather gracefully.



The Marina combo table enriches this patio. Notice how there's also a Marina placed indoors, what a fluid transition between outside and inside.



Marina

A table that can be as long as your guest list or as short as you need for a family of four: the Marina is designed for intimate gatherings or large meetings. You

and your guests can easily move about and engage with everyone. This table is the ultimate conversation playground.

Configure me



Types



Marina combo
(360 – 665 x 154/170 x 74 cm)



Marina picnic
(165 – 715 x 154/170 x 74 cm)



Marina table
(195 – 685 x 72/87 x 74 cm)



Marina high table
(195 – 685 x 72/87 x 105 cm)



Marina double desk
(405 x 149 x 75 cm)

Accessories & options



Floor fastening



Captain's Chair



Charging module



Wheelchair accessible
(Except for the high table)

Materials & colors

Coated fiberglass tabletop & benches & powder coated steel legs



Off white
RAL9002



Verdigris



Reed green
RAL6013

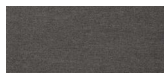


Copper brown
RAL8004

Sunbrella® cushions



Grey chiné



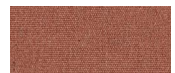
Dark taupe



Marble



Leaf green



Rust





Panigiri

© Design by Dirk Wynants for Extremis, 2023

An endless festival at the dining table. Panigiri's modularity ensures there's a seat for everyone, allowing table segments to be endlessly coupled. By combining chairs, benches and add-on chairs, you create the setting of your desire



All our designs are original creations and protected by intellectual property rights.

Extremis

Nestled beside the sea, this Mediterranean villa has its own alfresco haven featuring the Panigiri picnic setup and the elegant Senu Tilted umbrella. The BYOS (Bring Your Own Seat) and Slide-on cushions bring comfort to the organic wooden benches. Paired with the Walrus sofa in beige and terracotta hues, the patio becomes a picturesque retreat.







Panigiri



The Panigiri combo, paired with Captain's Pipe chairs, ages beautifully outdoors. The wood's soft gray patina perfectly complements the offwhite tones, creating a timeless monochrome look.



Sheltered by a generous roof overhang, this inviting patio features the Panigiri combo and sleek Captain's Pipe Chairs. Their dark color harmonizes with the bungalow's facade, while soft Slide-on cushions offer a touch of warmth and comfort to the wooden benches.

Extremis

→
The Bring Your Own
Seat (BYOS) option
allows you to hook
a super comfortable
woven backrest and an
upholstered seating
cushion onto the bench.



←
Enhance comfort with
slide-on cushions,
seamlessly secured
through a slide-in
technique.



Panigiri

Panigiri offers infinite combinations as soon as you start to play with length and seating options. Comprising only three elements—a central top, two end tops, and legs—the table's smallest setup ac-

commodates eight people comfortably. Adding an extra central top expands the length, providing four additional seats. The possibilities are limitless—construct your desired length with Panigiri!

More info



Types



Panigiri combo
(326 x 180 x 74 cm)



Panigiri picnic
(326 x 180 x 74 cm)



Panigiri table
(326 x 100 x 74 cm)



With Sensu (Tilted)

Accessories & options



Additional modules
(Adding 4 people)
(+ 156 cm per module)



BYOS
(Set of 2 pcs)



Slide-on cushion



Captain's Chair



Wheelchair accessible

Materials & colors

Tabletop & benches



Hellwood



Frame



Galvanized steel

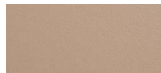
Legs



Black
RAL9005



Earth

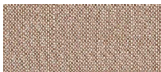


Beache beige
RAL1019

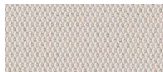


Off white
RAL9002

Slide-on & BYOS cushion



Coconut



Marble

BYOS frame



Earth





Pantagrue

© Design by Dirk Wynants for Extremis, 2014

Pantagrue is the son of Gargantua and a giant too: A Gargantuan round tabletop to gather the whole family, but refined elements and a handy Lazy Susan were added. Besides a picnic version there's also a table and high table. All perfect tools to enjoy the good things in life.



Want to know more? Order the whole story about the giants!
www.extremis.com/giants

Extremis



→
Pantagruel also serves as a parasol base. The pole fits into the tabletop, leaving all the space underneath for your legs!

At this university in Japan, they know the power of a good round table. Pantagruel picnic tables, scattered across the campus inside and out, are perfect for teamwork, lively debates, or heads-down focused work.







Pantagruel

Hidden behind a stately Bruges facade lies this luxurious urban jungle. Landscape architect Monbaliu created a green oasis with a mix of asymmetrical shapes and exuberant borders and the round Pantagruel picnic as centerpiece.



Extremis

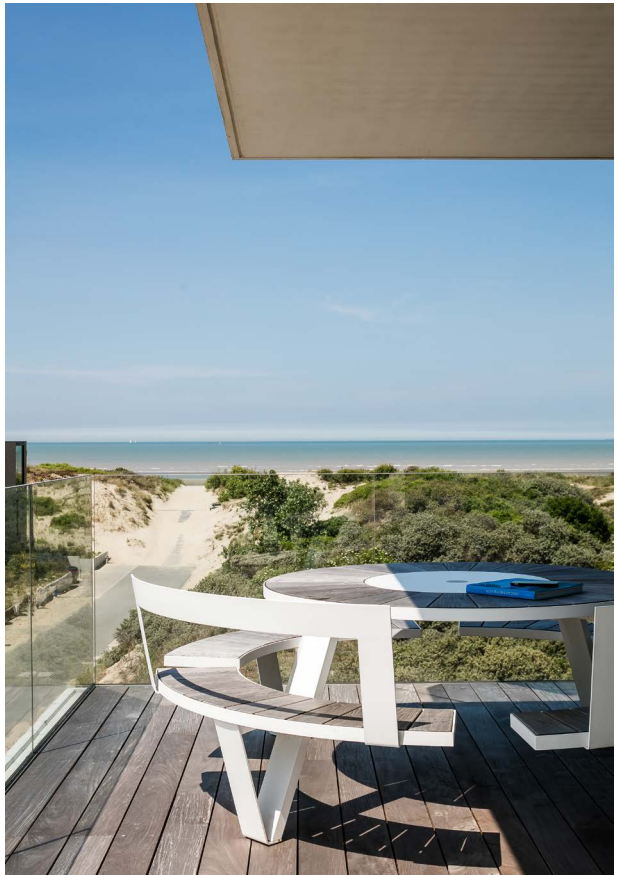


Add a backrest to your Pantagruel benches for extra comfort. These curved backrests follow the shape of the round picnic table while adding a sleek back support.



Pantagruel

The stepped construction of this apartment building by Govaert & Vanhoutte creates an intriguing play of floating terraces. The Pantagruel picnic seamlessly integrates in the design where open facades enhance the wide view of the North Sea, its dunes, and the natural reserve.





Pantagrue!

At the HQ of Afas Software in the Netherlands, the employees are enjoying a break on one of the many outdoor terraces. The Sunbrella cushions add a soft yet stylish touch to the Earth legs for ultimate comfort.





Pantagrue

At Endo Lighting in Tokyo, Japan, this indoor patio brings the outdoor elements indoors. The Pantagrue picnic tables bring people together, and its round shape includes everybody equally. The wooden seats and tabletop add a warm touch, while the shadow play adds an exciting element to the space.



The Ena campus in Greece aims to offer a balance between workspaces and break areas.



The Lazy Susan in the center of the Pantagrue table makes sharing easy.



Pantagruel

The Pantagruel round picnic table seats eight. When combined with the wood used for the tabletop and benches it forms a durable outdoor picnic set. Pantagruel also features a Lazy Susan, to

take the hard work out of passing food and drinks around. In addition to the picnic version, there is the Pantagruel table and the high table.

Configure me



Types



Pantagruel picnic
(ø227 x 75 cm)



Pantagruel table
(ø146 x 75 cm)



Pantagruel high table
(ø146 x 105 cm)



Various parasols

Accessories & options



Cushions
(Set of 4 pcs)



Backrest
(Set of 2 pcs)



Floor fastening



Charging module

Materials & colors

Tabletop & benches



Iroko



Hellwood

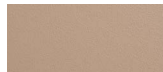
Frame, legs & backrests



Black
RAL9005



Earth



Beach beige
RAL1019



Off white
RAL9002



Galvanized steel

Sunbrella® cushions



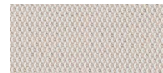
Grey chiné



Dark taupe



Coconut



Marble





Picnik

© Design by Dirk Wynants & Xavier Lust for Extremis, 2002

The launch of this design elevated a simple 'tête à tête' to an extremely romantic or even philosophical converse. Picnik became a real design classic, thanks to its iconic shape.





Picnik

The sweet spot of this house? The terrace with dune views! Step outside the bedroom and you'll find the Picnik table waiting for you to kickstart your day.



←
The Picnik in Verdigris blends easily with the garden, making the table a subtle eye-catcher.



Extremis



Picnik

At the Promenade Mall in Romania, Picniks in varying shades of red add a vibrant touch to the front terrace, inviting passersby to relax and enjoy a coffee after their shopping spree.



→
Relaxing in style in this
beautiful urban garden.



Picnik

This table for two is in fact much more than just a table seating two people. Picnik was of course primarily designed as a table and bench seat combination for small outdoor spaces. But thanks to its

striking looks – both solid and stylized at the same time – Picnik is also frequently used indoors. One flat aluminium sheet is transformed into a Picnik, thanks to a number of strategic incisions and folds.

Configure me



Types



Picnik
(147 x 95 x 75 cm)

Feet options



Standard feet



Floor fastening



Protective feet
(for delicate floors)

Options



Wheelchair accessible

Materials & colors

Powder coated aluminium



Off white
RAL9002



Verdigris



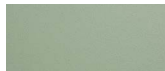
Copper brown
RAL8004



Cobalt blue
RAL5013



Sun yellow
RAL1032



Pistache
RAL6021





Sensu

© Design by Dirk Wynants for Extremis, 2022

This free hanging, tilting shade combines the serenity of flat design with the functionality of a hand fan system. Thanks to its unique design, Sensu catches the sun with a variety of positions and doesn't take up any space on your table.

Extremis

The flat canopy of the Sensu shade has a calming effect on any patio. The floating shade opens horizontally and thanks to its unique tilting and rotating design, it follows the sun throughout the day without effort. The perfect tool for a cool moment!



Sensu

Thanks to the smart design, the Sensu Quattro diamond effortlessly casts a shadow of almost 30m². Four floating canopies are all attached to the same central pole that can be fixed in the ground. Tripping hazards and a loss of space are now a thing of the past; it's time to enjoy a refreshing lunch!





Sensu

Sensu Tilted is the perfect companion for Panigiri. Boasting a forward 80° angle pole, this cantilever umbrella adds extra space around your table. Effortlessly navigate benches and chairs without hindrance.



Extremis

→
Easy tilt Senu to
create shade wherever
you want.



←
The Senu Tilted
creates extra space
around your table.

Sensu

A big patio and a big sofa... need much shade? Not an issue for this Sensu duo diamond shade. With two canopies hanging on the same pole, this shade doesn't take up important patio space, while casting a vast shadow.



Extremis



With a rotating and tilting feature, this Papyrus white Senu offers refreshing shade where most needed throughout the day. A light lunch at the Marina combo and later a dive in the pool... Who doesn't love to indulge in the summertime?



Sensu

This free-hanging cantilever parasol combines the beauty of flat design with the functionality of a hand fan system. Unlike traditional center-pole umbrellas, Sensu doesn't take up any space

on and under your table - both opened and closed. Rotate and/or cantilever the white, taupe, or black shade to follow the sun throughout the day.

More info



Types



Single - Straight
(360° rotatable)
(323 x 300 x 271 cm)



Single - Tilted
(360° rotatable)
(387 x 300 x 268 cm)



Duo square
(640 x 300 x 271 cm)



Duo diamond
(526 x 270 x 271 cm)



Quattro diamond
(526 x 526 x 271 cm)

Accessories for single



Wheel base



Base feet



Pole extension
(Single - Straight)



Pole extension
(Single - Tilted)



Pole extension
(Duo & Quattro)



Permanent fixation



Floor fastening
(Single)



Floor fastening
(Duo & Quattro)

Materials & colors

Acrylic fabric



Black



Taupe



White

Pole & wheel / feet base



Black
RAL9005



Earth



Off white
RAL9002





Sol+Luna

© Design by Dirk Wynants for Extremis, 2016

Sunbathe during the day, lounge with friends by night. Take it easy in our Sol+Luna sunbed, which transforms into a comfortable sofa at sunset. The optional sun shade changes into a full moon every night...



All our designs are original creations and protected by intellectual property rights.

Extremis



On this cozy poolside terrace, Sol+Luna proves its versatility. It's a sunbed for soaking up sunrays with the bolster pillow set cradling your head. But it's also a comfy sofa perfect for diving into a good book.



Watch the night fall under the full moonlight.





Sol+Luna

Sink into the comforts of the Sol+Luna sofa for a few hours. Hugged by the Marble cushions on the softly colored Earth frame, you'll never want to get up again.



Extremis

→
Attach the compact
shade and create shade
wherever you want.



↑
Transform the sunbed into a
comfortable outdoor lounge
sofa by adding some some
cushions.

Sol+Luna

Sun, sea, lounge, and fun. With Sol+Luna, you have a soft sofa and a perfect sunbed all in one, and with the optional wheels, you can follow the sun each moment of the day.



Extremis

Having friends over for the day is wonderful, but oh so exhausting... Time for a nap! Sol+Luna easily shifts from sofa to sunbed and vice versa, and thanks to the compact sunshade, you won't burn up while you nap away.



Sol+Luna

It's not a sunbed, it's not a sofa, it's both. Transform the sunbed into a comfortable outdoor lounge sofa by adding some comfort cushions. This multifunctionality makes Sol+Luna

the perfect space-saving solution for balconies or patios. Accessories can be used to create shade, add lighting and provide surfaces for drinks.

Configure me



Types



Sol+Luna
(210 x 77 x 61 cm)

Shades



Flat shade



Shade with LED
(warm or cool white)

Accessories & options



Recliner cushion



Comfort cushions
(separate)



Comfort cushions
(connected)



Bolster pillow set



Wheels



Cover



Storage net



Locker



Tapa table



Pool towel

Materials & colors

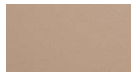
Powder coated frame, legs & backrest



Black
RAL9005



Earth

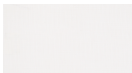


Beach beige
RAL1019



Off white
RAL9002

Batyline mesh



White



Earth



Black

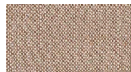
Sunbrella® cushions



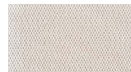
Grey chiné



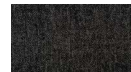
Dark taupe



Coconut



Marble

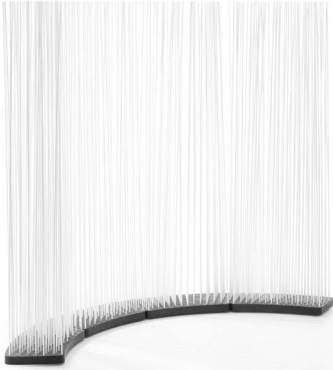


Sooty



Moss





Sticks

© Design by Hsu-Li Teo & Stefan Kaiser for Extremis, 2003

A space divider and the perfect way to create privacy wherever needed, inside or outside. Sticks divide your room or terrace optically, without losing the feeling of spaciousness.

Extremis

Merging perfectly with the color palette of this co-working space located in a former chapel, these Sticks offer privacy while adding a natural touch.



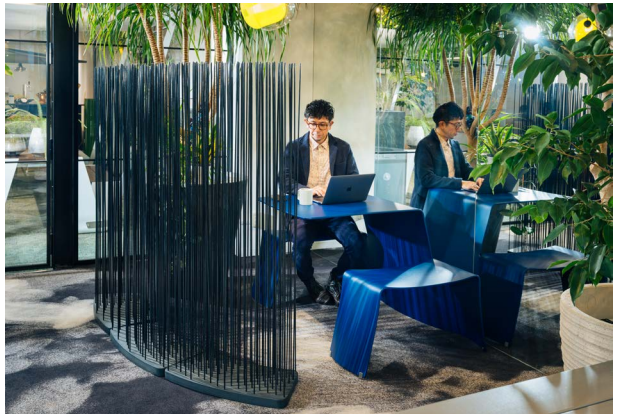
Sticks



In an open-plan office, employees find some privacy where needed.



Hide away behind the curved Sticks to get some focused work done. Without closing off the space with a hard boundary, this space divider offers privacy and a textured material.

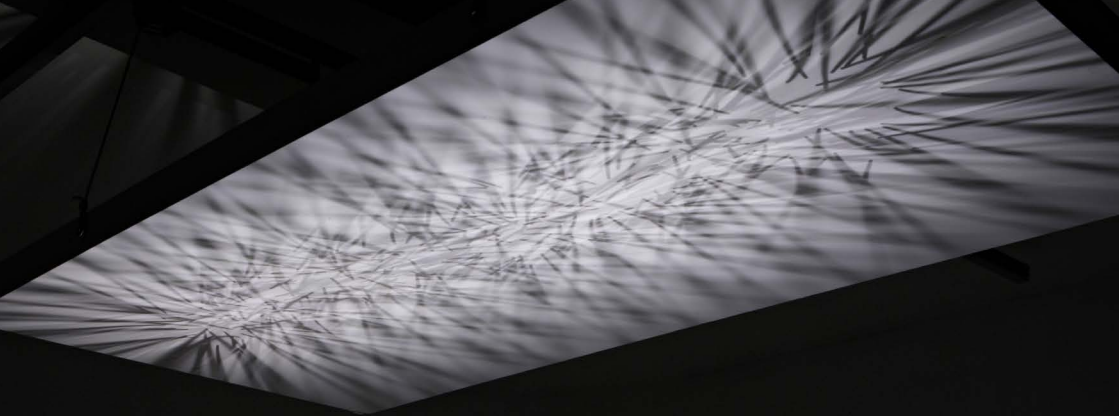




Inspired by nature, Sticks is the ideal space divider. They create a reed-like visual and physical barrier while allowing the light to flood through. Optional weighted bases and floor anchoring suggestions are offered for windy outdoor spaces.

→
Create your own stylish cocoon at home with the indoor Sticks with natural rubberwood bases.





Sticks

This space divider is the ideal way to create privacy, while keeping an open flow. Use Sticks indoors to adapt the look of a room or office arrangement entirely to your own taste. You can

also choose which and how many rods you use and create various degrees of transparency, color combinations or differences in length. Delivered with optional feet for delicate floors.

Configure me



Types



Rectangular bases
(60 x 30 x 5 cm)



Sharp curved bases
(65 x 33 x 5 cm)



Wide curved bases
(63 x 32 x 5 cm)

Accessories & options



Bases with LED
(Warm or cool white)



Biophilic Sticks
(Rods vary in height between
120/150/180/210 cm)



Extra weight



Connection piece

Materials & colors

Bases



Rubber



Dark rubberwood
(indoor use only)



Natural rubberwood
(indoor use only)

Fiberglass rods



White



Black



Wood color



Green





Tiki

© Design by Dirk Wynants for Extremis, 2018

This alluring table and stool await you, along with a fine, refreshing cocktail. Tiki is aperitif 2.0: a modern twist on the high-top café setting, not heavy and awkward to drag around, but lightweight and compactly stored away.

Extremis

The large breakfast area
with stunning views at B&B
'The Bunkers' in Knokke.







→
Transport and store your
Tiki tables effortlessly
with the Tiki Table Trolley,
it accommodates up to 8
small tables, 4 large tables,
or a mix of 4 small and 2
large tables.



↑
The Tiki Stool Trolley makes
storing and moving your
stools a breeze. Designed
for convenience, it safely
transports up to 12 stools,
counter, or bar stools.



Tiki

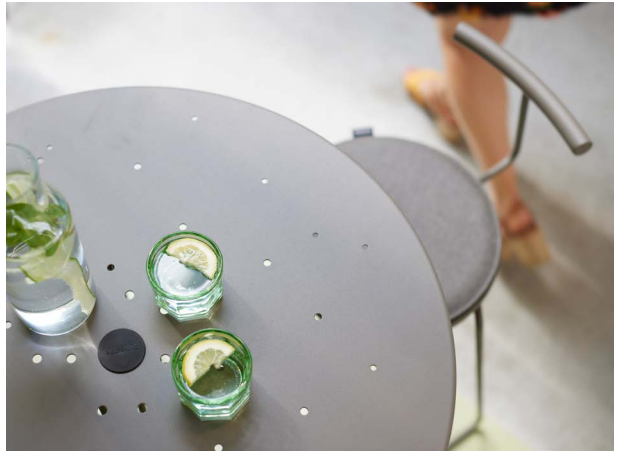
The high-top Tiki table brings elegance to any setting. The light table folds together tightly for easy storage.



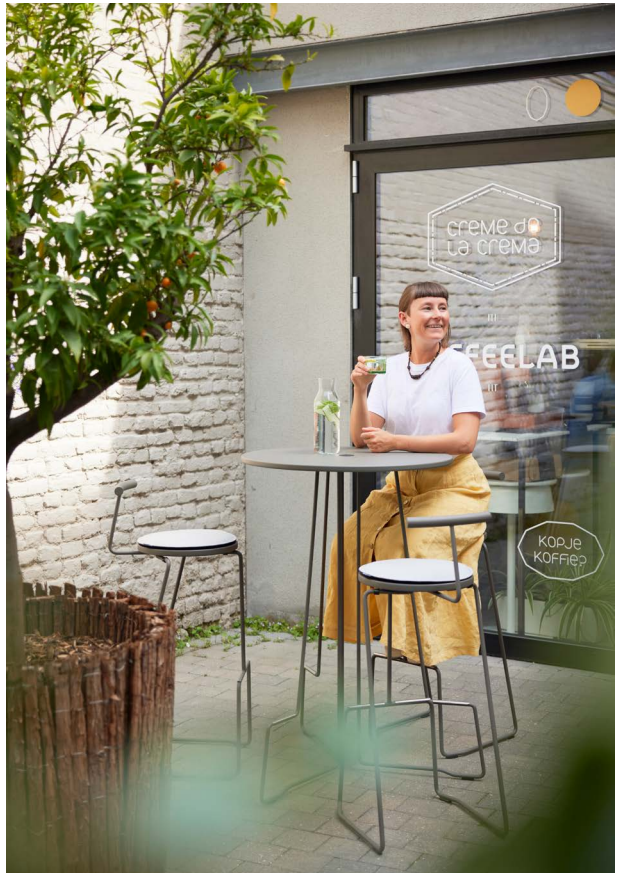


Tiki

In this cozy coffee shop, you can have a seat at the Earth Tiki sets. The owners easily unfold Tiki tables and add stools when it's rush hour. The wire-frame base made up of outdoor-resistant materials and the bent steel legs bring comfort to tired feet.



In this charming Vienna garden, Tiki counter stools turn grilling into a shared experience. Perfectly paired with the concrete countertop, their light tones and comfy cushions invite you to enjoy an aperitif while the barbecue sizzles.



Tiki stools

Tiki is the ideal bar stool for your garden party. The steel legs and seat give the design a pure, uncomplicated line. Or why not opt for a stylish twist, with a wooden seat? With its minimalist con-

tours, this bar stool blends seamlessly in any party setting whilst offering comfortable seating and support for tired feet.

More info



Types



Stool
(39 x 41 x 45 cm)



Counter stool
(41 x 41 x 63 cm)



Bar stool
(41 x 43 x 74 cm)

Trolley



Stool Trolley
(63 x 41 x 162 cm)

Accessories & options



Cushion



Backrest



With Marina high table



With Pantagruel high table



With AMAi

Materials & colors

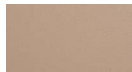
Legs & seat



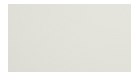
Black
RAL9005



Earth



Beach beige
RAL1019



Off white
RAL9002



Verdigris



Reed green
RAL6013



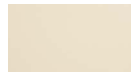
Copper brown
RAL8004



Cobalt blue
RAL5013



Sun yellow
RAL1032



Cosmic cream
RAL1015



Pistache
RAL6021



Oiled oak
(seat only)

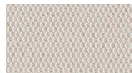
Sunbrella® cushions



Grey chiné



Dark taupe



Marble



Charcoal



Leaf green



Indigo



Loto

Tiki tables

Tiki is the ideal bar stool for your garden party. The steel legs and seat give the design a pure, uncomplicated line. Or why not opt for a stylish twist, with a wooden seat? With its minimalist con-

tours, this bar stool blends seamlessly in any party setting whilst offering comfortable seating and support for tired feet.

More info



Table types (with or without tabletop holes)



Table small
(ø90 x 105 cm)
(Tabletop ø80 cm)



Table large
(ø110 x 105 cm)
(Tabletop ø100 cm)

Trolley



Table Trolley
(69 x 75 x 123 cm)

Materials & colors

Stools & tables



Black
RAL9005



Earth



Off white
RAL9002



Verdigris



Copper brown
RAL8004





Virus

© Design by Dirk Wynants for Extremis, 2016

Virus, a playful picnic table for 3/4/5 people, brings life, a smile and dynamism to even the most sterile areas. For every kind of gathering and every room there is an ideal Virus-table. Togetherness everywhere!



HENRY VAN
DE VELDE
AWARDS
NOMINEE 17



All our designs are original creations and protected by intellectual property rights.

Extremis

→
Add a backrest for
extra comfort.



←
In combination with the
Acacia shade.



Merging with every garden
and guest.

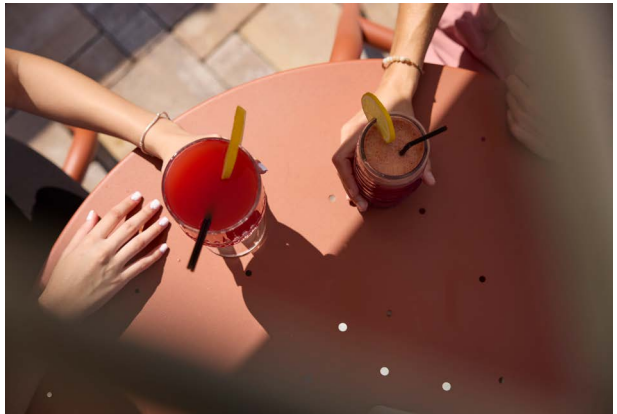




Virus



Vibrant Virus tables brighten the front terrace of this shopping mall in Craiova, Romania, offering visitors a welcoming spot to unwind with a drink.



Yellow Virus tables welcome students at the entrance of student residence Hult House, designed by EF Architecture & Design in Boston, USA.



The compact Virus is ideal for a small balcony or patio.



Virus

Virus is a picnic table in various guises. Different versions based on an identical seating frame for three to five people. This is a fun way of filling a space with a mixture of small to medium-sized

seating sets without losing uniformity. The compact design responds to the trend for smaller living spaces, offering a solution that enables you to use our tools on balconies and in urban gardens.

Configure me



Types (with or without tabletop holes)



3-seater
(ø160 x 74 cm)



4-seater
(ø170 x 74 cm)



5-seater
(ø180 x 74 cm)



With Acacia shade

Accessories & options



Backrest



Cushions



Floor fastening



Stacking spacer /
Purse hanger



Charging module



Wheelchair
accessibility options

Materials & colors

Powder coated tabletop, seats, legs & backrest



Off white
RAL9002



Verdigris



Reed green
RAL6013



Copper brown
RAL8004



Cobalt blue
RAL5013



Sun yellow
RAL1032



Cosmic cream
RAL1015



Pistache
RAL6021

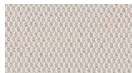
Sunbrella® cushions



Grey chiné



Dark taupe



Marble



Charcoal



Leaf green



Indigo



Loto





Walrus

© Design by Dirk Wynants for Extremis, 2014

The only "real" outdoor sofa. Named after the impressive mammal that braves water, weather and wind with its thick, smooth hide, this design combines two different materials in order to fulfill the seemingly irreconcilable requirements of high comfort levels, aesthetics and ultimate weather resistance.



All our designs are original creations and protected by intellectual property rights.



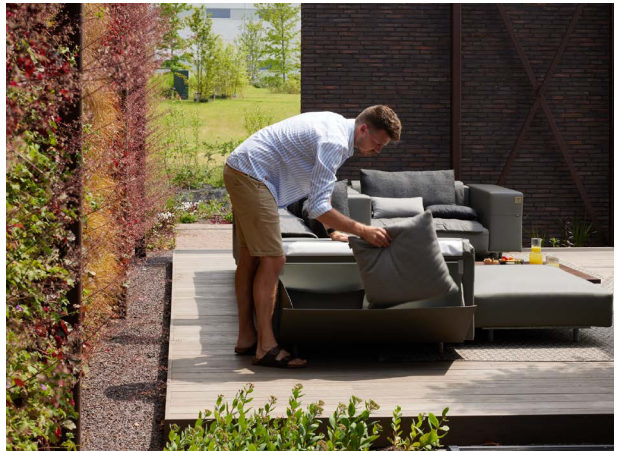
Walrus



The sturdy outdoor sofa in the color Earth withstands all weather elements. When it's time to get cushy, just take out the softness from the pouch and start lounging!

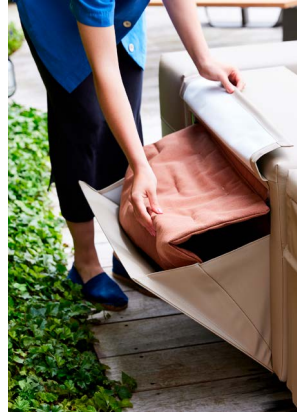


The sofa's color seamlessly blends with the terrace, while the cushions perfectly complement the poolside stones. Not only is it a feast for the eyes, but it's also incredibly practical—no need to worry about splashes, as Walrus is completely waterproof!



Extremis

Choose your favorite upholstery colors and keep all the cushions ready in the back pockets of Walrus. Always at hand and adapted to any weather condition.



In summer, Walrus sofa is everyone's favorite hotspot.



Extremis

Out of the Fjordinary

A boreal and montane togetherness biome



Blanket
Charcoal



Comfort cush.
Grey chiné



Lumbar cush.
Alpine



Deco cush.
Sooty

Forests & Fields

A green and rural togetherness biome



Blanket
Coconut



Comfort cush.
Marble



Lumbar cush.
Dark taupe



Deco cush.
Leaf green

Walrus

A Lotta Terracotta

A mediterranean togetherness biome



Blanket
Coconut



Comfort cush.
Marble



Lumbar cush.
Blush



Deco cush.
Rust

Majestic Mirage

A sandy and breezy togetherness biome



Blanket
Marble



Comfort cush.
Indigo



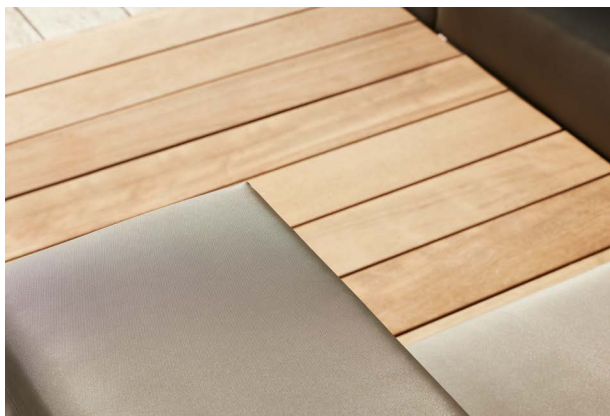
Lumbar cush.
Biscuit



Deco cush.
Loto

Extremis

With its soft brownish hide this Earth Walrus adds a calming touch to the patio, not grabbing the attention of the gorgeous views but rather complementing them. This high-performance fabric can stay outdoors in any season, just take the cushions out of the built-in pockets to start lounging in all comfort.



Walrus

The only outdoor sofa that can really stay outdoors. An ingenious storage pouch in the back of the Walrus hides a foldout blanket and a thick cushion to provide the softness, comfort and touch

that feel best in contact with your body. This softness is provided in a matter of seconds: a warm, dry and comfortable place to sit outdoors is instantly available. Yes, in all seasons!

Configure me



Types



Club chair
(140/170 x 110 x 61 cm)



Corner seat
(110/140 x 110 x 61 cm)



Middle seat
(80/110 x 110 x 61 cm)



Footstool
(110 x 80 x 46 cm)



Seat with 2 side tables
(108/138 x 110 x 61 cm)



Seat with side table & armrest
(138/168 x 110 x 61 cm)



Seat with side table
(135/165 x 110 x 61 cm)



All modules available in two sizes, 110 or 80 cm wide seating cushion

Accessories & options



Blankets



Comfort cushions



Lumbar cushions



Deco cushions



Coffee tables



Connection piece

Materials & colors

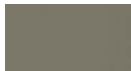
Tarpaulin upholstery



Chalk



Safari



Earth

Wood



Iroko



Hellwood

Sunbrella® cushions



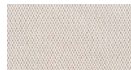
Grey chiné



Dark taupe



Coconut



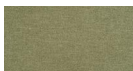
Marble



Charcoal



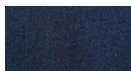
Sooty



Leaf green



Moss



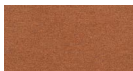
Indigo



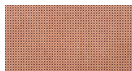
Alpine



Loto



Rust



Craps



Blush



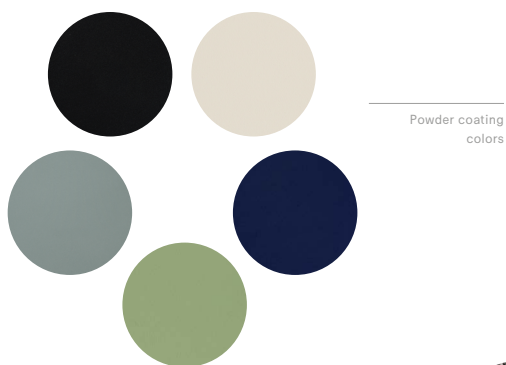
Biscuit

Extremis

Out of the Fjordinary

A boreal and montane togetherness biome

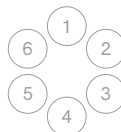
We translated the northern biomes into a balanced color palette, transcending the ordinary through a blend of nature's most incredible beauty



Sunbrella fabric colors



1. Black
2. Off white
3. Cobalt blue
4. Pistache
5. Verdigris



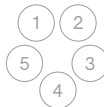
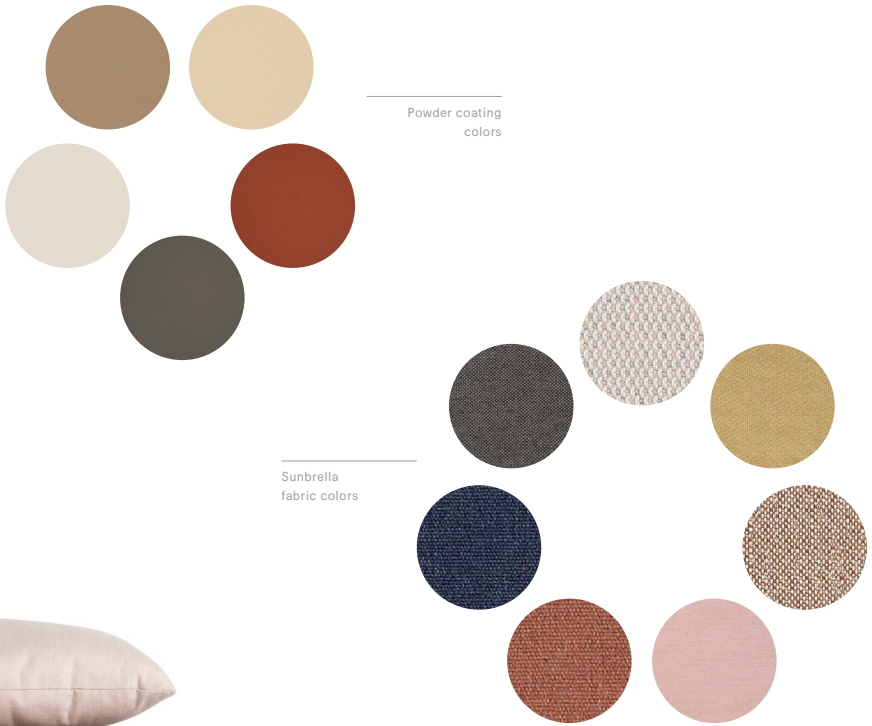
1. Grey chiné
2. Moss
3. Alpine
4. Indigo
5. Sooty
6. Charcoal

Biomes

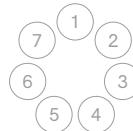
A Lotta Terracotta

A mediterranean togetherness biome

Welcome to warm earthy tones and terracotta red shores: this is just the perfect holiday color palette



1. Beach beige
2. Cosmic cream
3. Copper brown
4. Earth
5. Off white



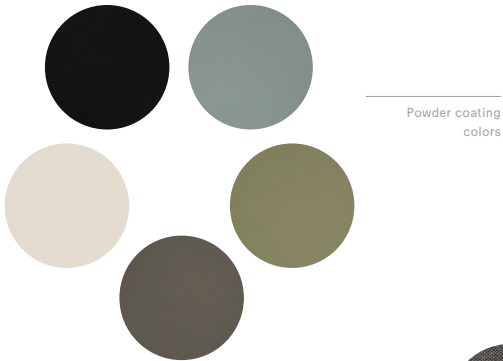
1. Marble
2. Biscuit
3. Coconut
4. Blush
5. Rust
6. Indigo
7. Dark taupe

Extremis

Forests & Fields

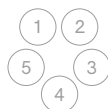
A green and rural togetherness biome

Rooted in West-Flemish tradition, we blend temperature forest elements - the main European biome - with local clay and hay for a unique touch

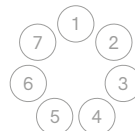


Powder coating
colors

Sunbrella
fabric colors



1. Black
2. Verdigris
3. Reed green
4. Earth
5. Off white



1. Marble
2. Coconut
3. Biscuit
4. Moss
5. Leaf green
6. Sooty
7. Dark taupe



Biomes

Majestic Mirage

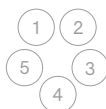
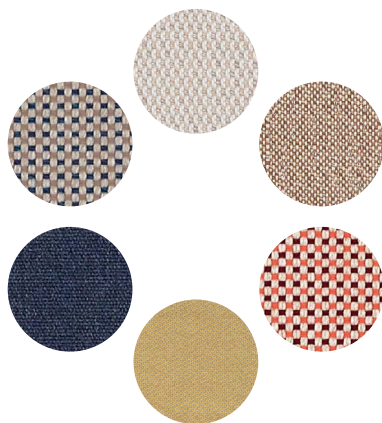
A sandy and breezy togetherness biome

Embark on a captivating nighttime escapade where gentle hues of yellows and rich accents cast a mesmerizing allure over the dunes

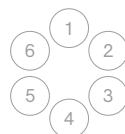


Powder coating
colors

Sunbrella
fabric colors



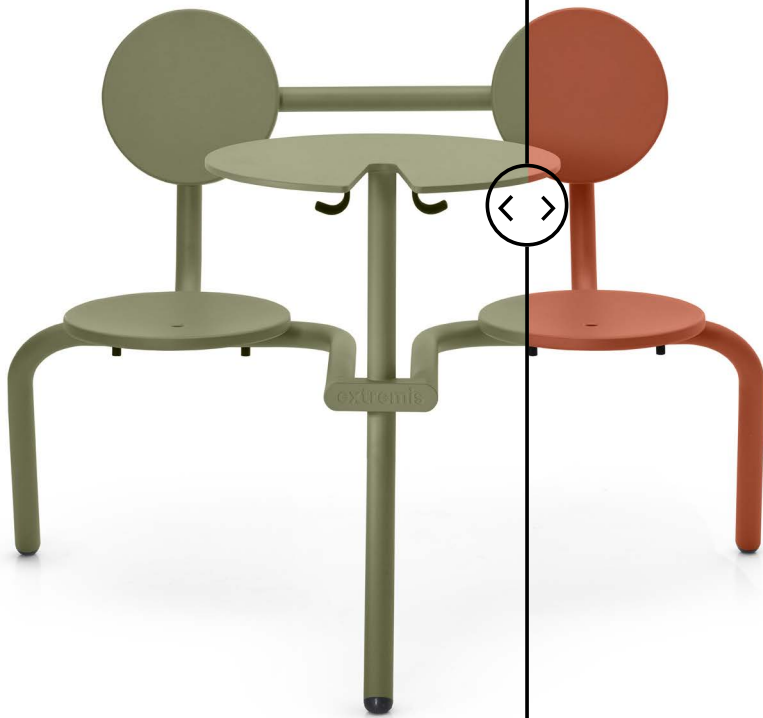
1. Off white
2. Sun yellow
3. Cosmic cream
4. Indigo
5. Beach beige



1. Marble
2. Coconut
3. Craps
4. Biscuit
5. Indigo
6. Loto



Extremis



Configurator

Try out every conceivable color and material combination;
your perfect 'tool for togetherness' is just a click away!



Scan me

Colophon

EXTREMIS

Couthoflaan 20b
8972 Poperinge - BELGIUM
+32 57 346020
info@extremis.com
www.extremis.com

BE THE FIRST TO KNOW



IMAGES

Adam Morsk
Annick Vernimmen
BD Photography
Beeldcollectief
Bieke Claessens
Cafeïne
De Telder Tuinen
LeighAnn Cobb
Dave Kulesza
Extremis
François Charlier
Frederik Vercruysse
Georgios Sfakianakis
Hilde Verbeke
HR Photographie
Hubert Renson
Joji Okamota
Julien Lannoo
Marc Wallican
Michael de Pasquale
Mr. Frank
MW-Architekturfotografie
Nacása & Partner Inc.
NOA
P1 Studio
Peter Würmli
Pieter Kers
Pilar Shoots
Studio Nunu
Studio PSG
Tim van de Velde
Tom Ross

PRODUCTS

Acacia © 2018 Dirk Wynants
AMAI © 2021 Dirk Wynants
Anker © 2015 Dirk Wynants
Bistroo © 2018 Dirk Wynants
Captain's Chair © 2013 Metrica
Gargantua © 1994 Dirk Wynants
Hopper © 2010 Dirk Wynants
Hopper shade © 2010 Dirk Wynants
Inumbra © 2002 Dirk Wynants
Inumbrina © 2009 Dirk Wynants
Kosmos © 2008 Dirk Wynants
Kosmos shade © 2008 Dirk Wynants
Manille © 2023 Dirk Wynants
Marina © 2012 Metrica
Panigiri © 2023 Dirk Wynants
Pantagruel © 2014 Dirk Wynants
Picnik © 2002 Dirk Wynants & Xavier Lust
Sensu © 2021 Dirk Wynants
Sol+Luna © 2016 Dirk Wynants
Sticks © 2003 Hsu-Li Teo & Stefan Kaiser
Tiki © 2018 Dirk Wynants
Virus © 2016 Dirk Wynants
Walrus © 2014 Dirk Wynants



All rights reserved. Unless otherwise specified, all designs and photographs contained in this publication are copyright protected and are the property of Extremis. No part of this publication may be copied or distributed without Extremis' prior written consent. The names of the authors of photographs to which we do not hold rights are mentioned here. We have done our utmost to provide a comprehensive list of names. In the event of an alleged breach, please contact the editorial staff.



FOR TOGETHERNESS
HERNESS TOO