



GOMMAIRE

organic living



OUTDOOR 2025



INTRO

GOMMAIRE - Organic Living is a Belgian brand that brings you a vast collection of interior and exterior furniture, as well as a wide array of decorative items.

From authentic and reclaimed wood tables and chairs to first-rate upholstered sofas, lounge sets, matching decorative items and more: our brand has all the right ingredients to make a house into a home.

Each year new designs are added to the collection, always renewing and improving while remaining true to the element of timelessness and durability. That is why each of our organic and unique pieces will provide you with a lifetime of enjoyment in a highly qualitative and exclusive setting.

Almost everything in our collections has been conceived and created by our own designers, including CEO Laurent De Greef. The innovative, nature-inspired designs by their hand and the traditional techniques that are used to make them come to life, merge into the masterful result that is GOMMAIRE.

Browse through this catalogue, be visually indulged and discover our brand for yourself.



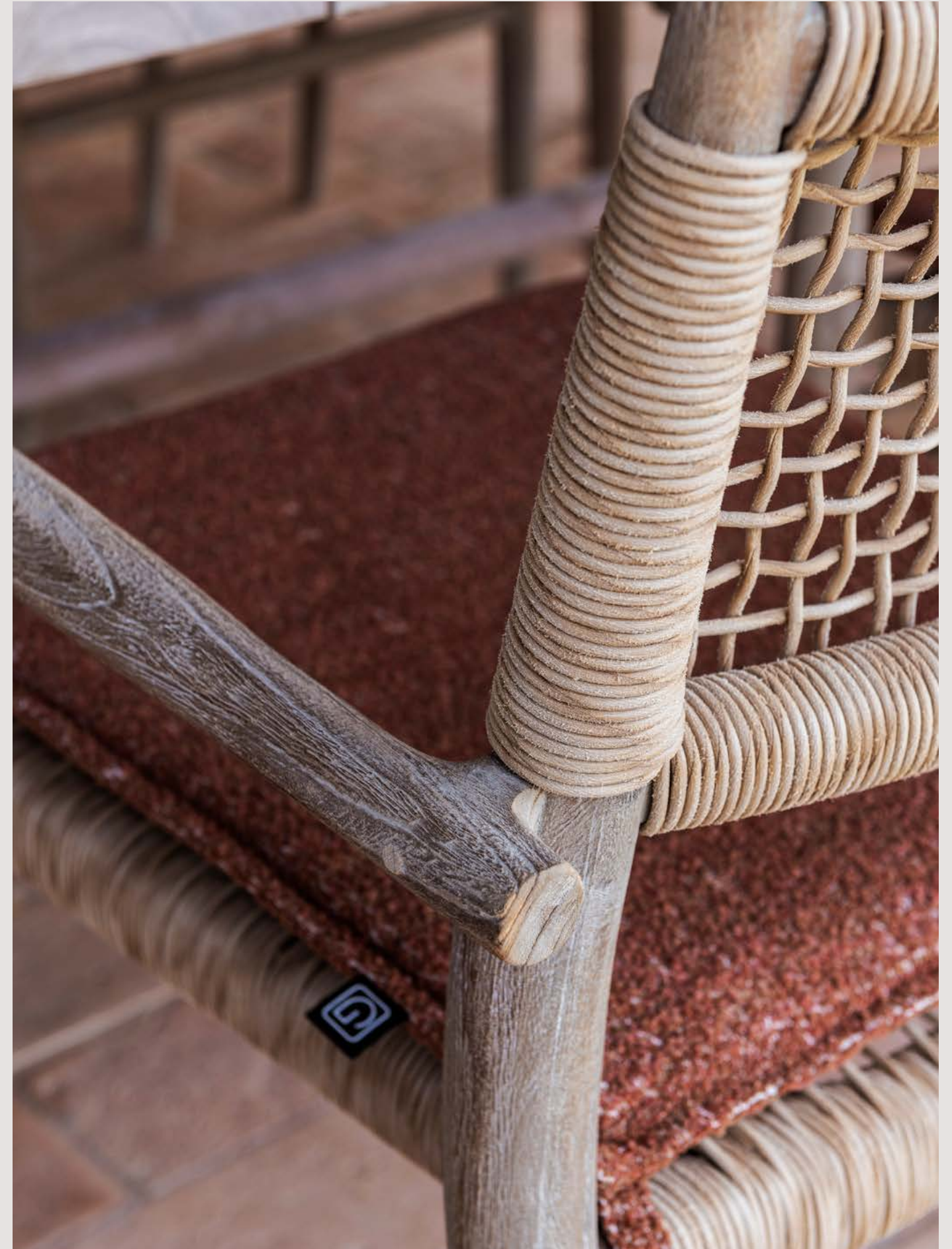
OUR STORY

GOMMAIRE - Organic Living started off with the dream of seeing a Belgian line of furniture come to life. In January 2015, every effort was made to see it come true. Today our brand has surpassed even our wildest dreams: from a small Belgian furniture brand with big aspirations to an established player in the international interior and exterior market. And we are working hard to continue growing, so our furniture can be enjoyed across the globe.

With our furniture and decoration design, we aim to tell a story. A story in which timeless, unique and qualitative enjoyment is the common thread. In which nature plays its role as protagonist with fervour, as it is preserved in the shapes and materials of our designs. And in which the individual pieces of furniture, like separate story lines, come together to form a strong, organic overall concept.

The tellers of that story are the people who have shaped GOMMAIRE and continue to do so to this day. From management to employees to everyone who markets the brand and its products: we are passionate about our trade, committed to continuously improve and willing to go the extra mile for our customers.

GOMMAIRE is more than furniture. It is an experience. It is a beautiful contrast between creative innovation and traditional craftsmanship. It is enjoying life in a sustainable, timeless and exclusive atmosphere.

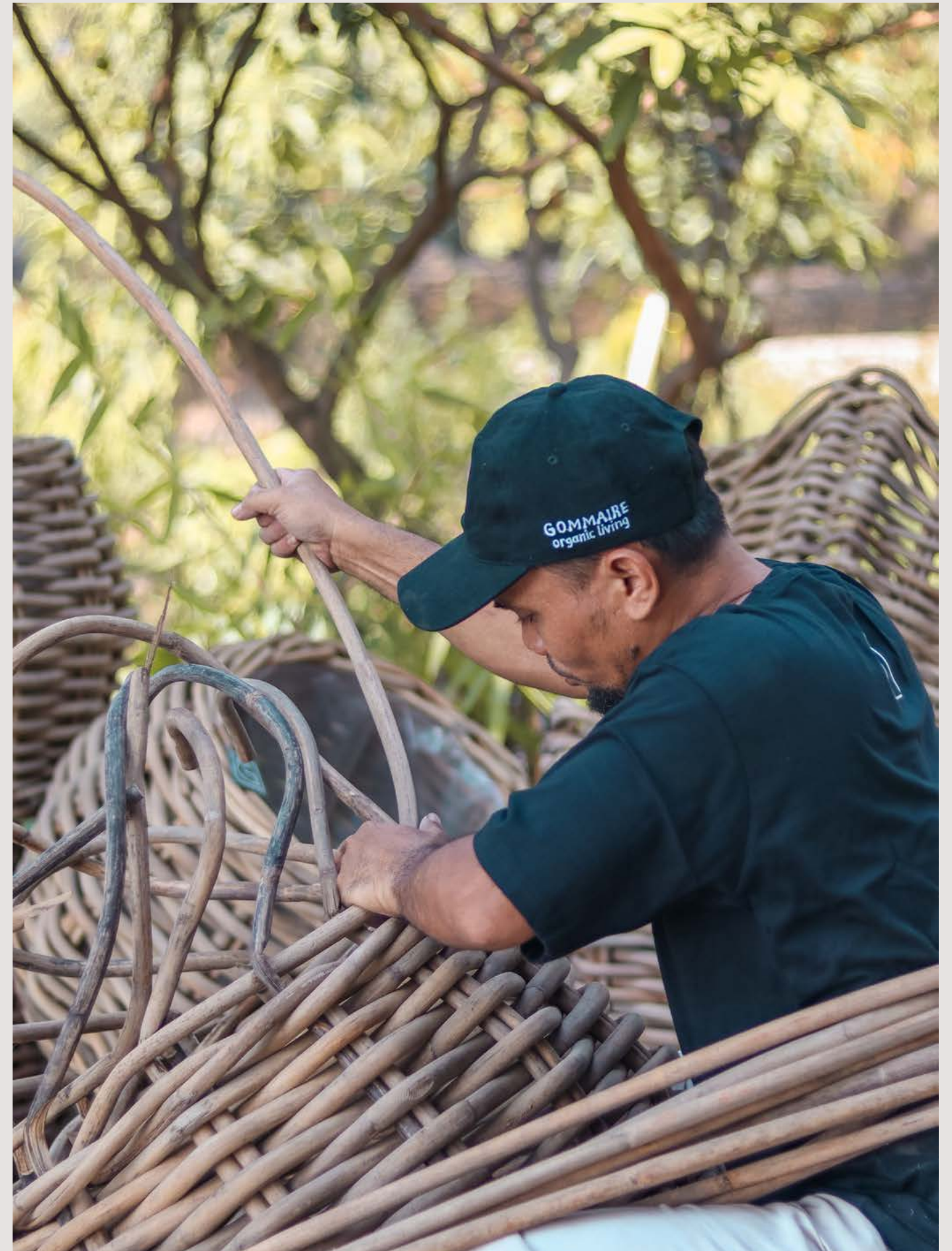


OUR PEOPLE

Our home based Belgian team is reinforced by skilled artisans who expertly and passionately bring our designs to life, using the local traditions and natural resources of India, Indonesia, Morocco and Portugal. It is their masterful craftsmanship that inserts artisanal charm and authenticity into our collections.

GOMMAIRE runs on drive, professionalism and most of all teamwork. It is the minds of our inhouse designers that conceive innovative organic creations. It is the hands of our experienced craftsmen that capture the essence of nature's beauty in these designs. And it is the passion of our entire team that convinces people all over the world to hear our story, to experience our pieces, to live our brand.

All of us together work hard to keep improving all aspects of our brand experience. Innovation is central to our approach. That includes new and improved materials or finishes, distinctive designs, expansions in our product categories and adjustments to our work process. All to be able to provide enjoyment to the most important person in our narrative: you, our customer.



THE GOMMAIRE OUTDOOR COLLECTION

Our outdoor collection consists largely of nature's finest resource: natural teak wood, which blends together beautifully with the intrinsically integrated rope, wicker, rattan and other materials that make up our stunning outdoor items. Telling tales of organic origin with their natural lines, shapes and textures, all exterior designs harmonise exceptionally well with the splendour of the outdoors.

Our passion for seating comfort complements these designs: specially designed and handpicked fabrics manufactured within European borders add a high-quality finish to each upholstered piece, as well as to our custom cushions. Professionally treated for outdoor usage, they will continue doing so for a long time. Discover the current fabric selection from page 174 onwards.

Lounge sets and sunloungers will help you create a peaceful outdoor oasis. A wide range of teak wood tables and complementary chairs will help you put together the perfect setting for lovely lunches and late-night dinners. Bar tables, bar stools and matching accessories will fill up your terrace space with a summer-ready layout to watch the sunrises and sunsets in, with a morning coffee or an evening cocktail in your hand.

There are some new additions to our outdoor collection. Some are completely new designs, like Side Table Laya or Stool Asti, others are derived from or an expansion of existing pieces. A perfect example of the latter is the Faye outdoor collection, including chairs based on our long-established indoor model, expanded with a series of tables, a sunbed, a stool and more. Or the outdoor answer to our existing indoor version: Sofa and Swivel Jules.

Experience our entire outdoor collection on the following pages. Be inspired by the carefully selected settings and discover more details about the outdoor designs in the technical specifications section, starting from page 180. Maintenance advice can be found from page 226 onwards and on our website, so you can keep your pieces in optimal condition.

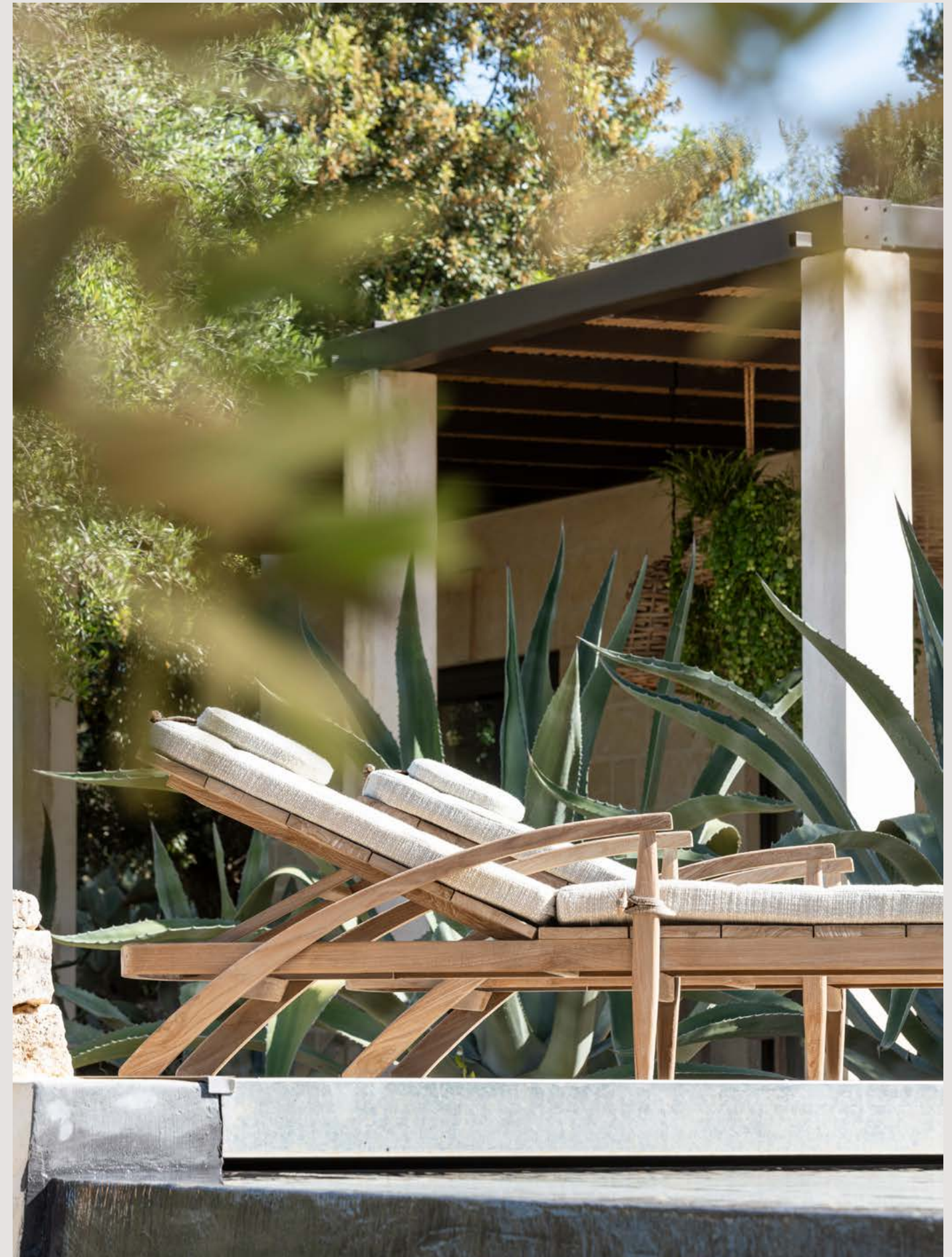


TABLE OF CONTENTS

Dining area	14
Lounge area	84
Sunloungers	128
Accessories	152
Fabric selection	174
Technical specifications	180
Care & use	226
General terms & conditions of sale	242



THE ACTUAL COLOURS MAY VARY FROM IMAGES SHOWN,
DIMENSIONS ARE INDICATIVE AND MAY DIFFER FROM REALITY.



DINING AREA

A wide selection of chairs, benches and tables makes it easy to find the perfect seating arrangement for your outdoor dining area.

The beautiful blend of high-quality teak wood and rope, wicker and more, bring outdoor dining experiences to a new level. Expertly finished by means of careful handwork, all pieces exude craftsmanship. Moreover, they are all designed to complement each other, which means various combinations will have a desirable result.

This year’s new dining furniture includes a range of Faye chairs and tables, all characterised by the contrast of a fine structure with a seat or table top with wide planks, or a seat of soft wicker. The Jacoba tables and benches are inspired by our existing Jacob Table, but with a new look. Lastly, our Mario chairs are based on our already existing lounge collection, featuring sober lines, solidity and comfort.

In line with the GOMMAIRE philosophy, our wooden items are not treated, as we believe the natural material becomes more beautiful with usage and the passage of time. Discolouration and changes in patina caused by daylight, only add to their organic charm. However, to protect them and optimise their lifespan, we do have some maintenance products on offer. Advice on how to use them can be found from page 226 onwards and on our website.

May the following dinner settings fuel your inspiration and love for design. All technical specifications, fabric customisation options and maintenance advice can be found at the end of the catalogue.





Our outdoor tables and chairs are designed to reflect nature's splendour. The use of teak wood, renowned for its durability and added beauty after usage and time, forms the foundation of these exquisite pieces, providing a natural and warm ambiance to any outdoor setting.



EASY CHAIR FAYE | P. 185 | CUSHION EASY CHAIR FAYE | P. 185
LOW DINING ROUND TABLE FAYE XL | P. 197 | LAZY FAYE | P. 197



EASY CHAIR FAYE | P. 185 | CUSHION EASY CHAIR FAYE | P. 185 | CUSHION BACKREST EASY CHAIR FAYE | P. 185 |
LOW DINING BISTRO ROUND TABLE FAYE | P. 197 | ARMCHAIR FAYE WICKER SEAT | P. 184 | BISTRO ROUND TABLE FAYE | P. 197





ARMCHAIR FAYE WICKER SEAT | P. 184 | BISTRO ROUND TABLE FAYE | P. 197 | SQUARE SOFT POUF SMALL - LARGE WITHOUT PIPING | P. 223



ARMCHAIR FAYE | P. 184 | ROUND TABLE FAYE | P. 196





ARMCHAIR CHARLY | P. 185 | CUSHION ARMCHAIR CHARLY | P. 185 | ROUND TABLE FAYE | P. 196





ARMCHAIR MARIO | P. 184 | CUSHION ARMCHAIR MARIO | P. 184 | TABLE MIA LARGE | P. 195





ARMCHAIR MARIO | P. 184 | BENCH JACOBA LARGE | P. 190 | TABLE JACOBA LARGE | P. 190



ARMCHAIR MARIO ROPE | P. 184 | CUSHION ARMCHAIR MARIO | P. 184 | TABLE JACOBA LARGE | P. 190

The rope detailing creates an inviting embrace, while the carefully selected fabrics provide comfortable seating that beckons guests to linger and indulge in the pleasures of outdoor dining.





EASY CHAIR CARLO | P. 186 | CUSHION SET EASY CHAIR CARLO | P. 186 | LOW DINING TABLE JACOBA | P. 191





LOW TABLE CARLO | P. 196 | EASY CHAIR CARLO | P. 186 | CUSHION SET EASY CHAIR CARLO | P. 186





ARMCHAIR CARLO UPHOLSTERED | P. 186 | DINING TABLE CARLO | P. 196
ARMCHAIR JENNA | P. 185 | CUSHION ARMCHAIR JENNA | P. 185



ARMCHAIR SALLY | P. 182 | CUSHION ARMCHAIR SALLY | P. 182 | TABLE ABE | P. 193 | PLANTER BASKET JULIA MEDIUM | P. 222



ARMCHAIR SALLY | P. 182 | CUSHION ARMCHAIR SALLY | P. 182 | CUSHION BACKREST ARMCHAIR SALLY | P. 182 | TABLE ABE | P. 193

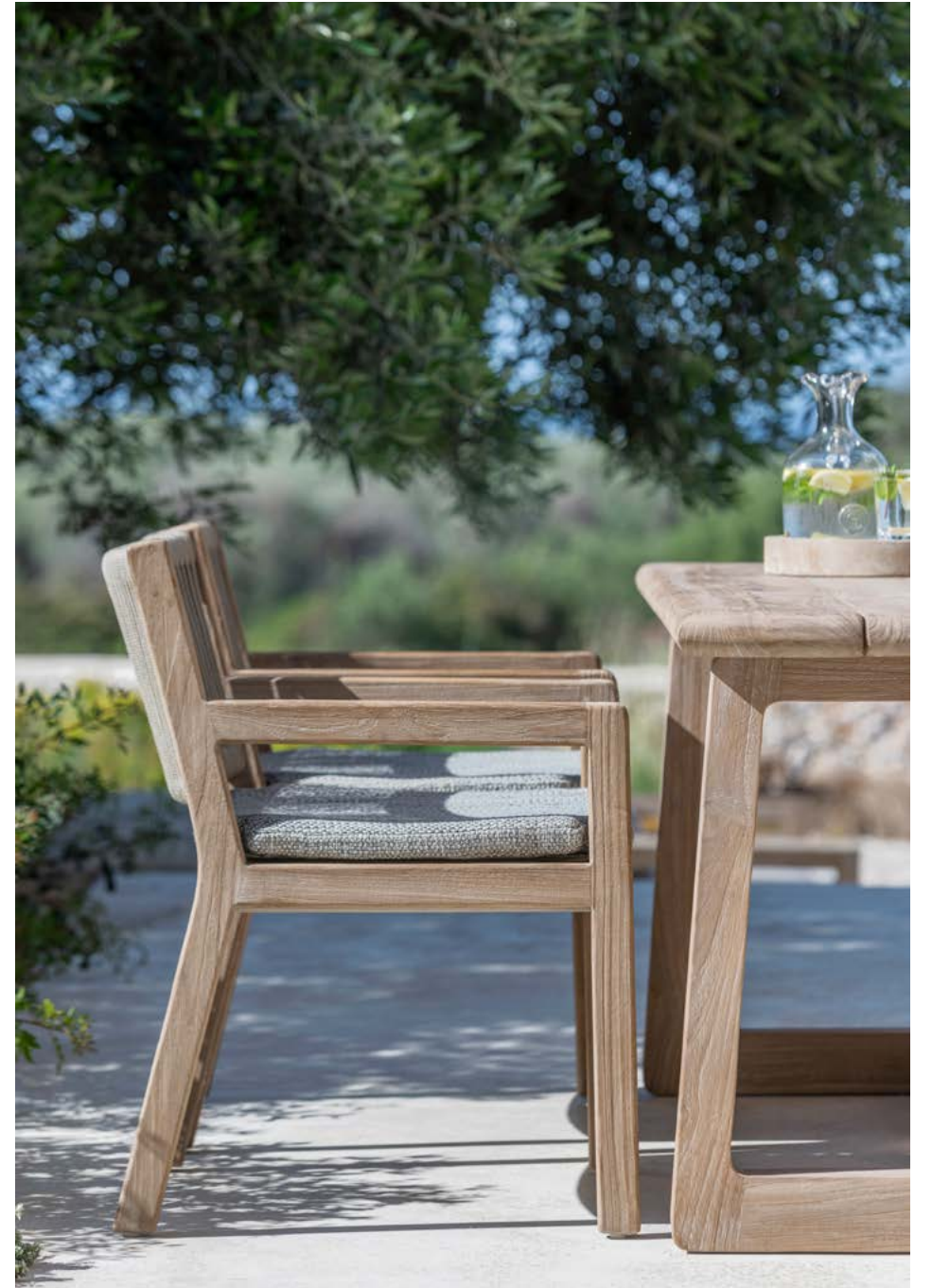






ARMCHAIR SALLY | P. 182 | CUSHION ARMCHAIR SALLY | P. 182 | SQUARE TABLE DENNIS | P. 192 | RECTANGULAR TABLE DENNIS LARGE | P. 191





ARMCHAIR MARIO ROPE | P. 184 | CUSHION ARMCHAIR MARIO ROPE | P. 184
RECTANGULAR TABLE DENNIS SMALL | P. 191



RACK ROLF | P. 219 | BAR CHAIR SALLY | P. 186 | CUSHION BAR CHAIR SALLY | P. 186
CUSHION BACKREST BAR CHAIR SALLY | P. 186 | BISTRO BAR TABLE DENNIS | P. 192





BAR CHAIR JARED | P. 186 | CUSHION BAR CHAIR JARED | P. 186 | CUSHION BACKREST BAR CHAIR JARED | P. 186
RECTANGULAR BAR TABLE DENNIS SMALL | P. 191



ARMCHAIR FIONA | P. 183 | CUSHION ARMCHAIR FIONA | P. 183
TABLE MAXIMUS | P. 196



BAR CHAIR MIEKE | P. 187 | RECTANGULAR BAR TABLE MIEKE | P. 194





Whether nestled in a serene garden, overlooking a picturesque landscape, or gracing a chic terrace, our dining sets allow diners to savour the bounties of outdoor living without compromising on luxury, style and comfort.



STACKABLE ARMCHAIR MIEKE | P. 182 | CUSHION STACKABLE ARMCHAIR MIEKE | P. 182 | DINING TABLE MIEKE | P. 194







BAR STOOL ALEXI | P. 187 | CUSHION BAR STOOL ALEXI | P. 187 | BAR TABLE ALEXI LARGE | P. 193
 ARMCHAIR CHARLY | P. 185 | CUSHION ARMCHAIR CHARLY | P. 185 | ROUND TABLE ANTON LARGE | P. 195







ARMCHAIR FIONA | P. 183 | CUSHION ARMCHAIR FIONA | P. 183 | TABLE JACOB SMALL | P. 193
 CHAIR FIONA | P. 183 | CUSHION CHAIR FIONA | P. 183 | OVAL TABLE DAN SMALL | P. 195

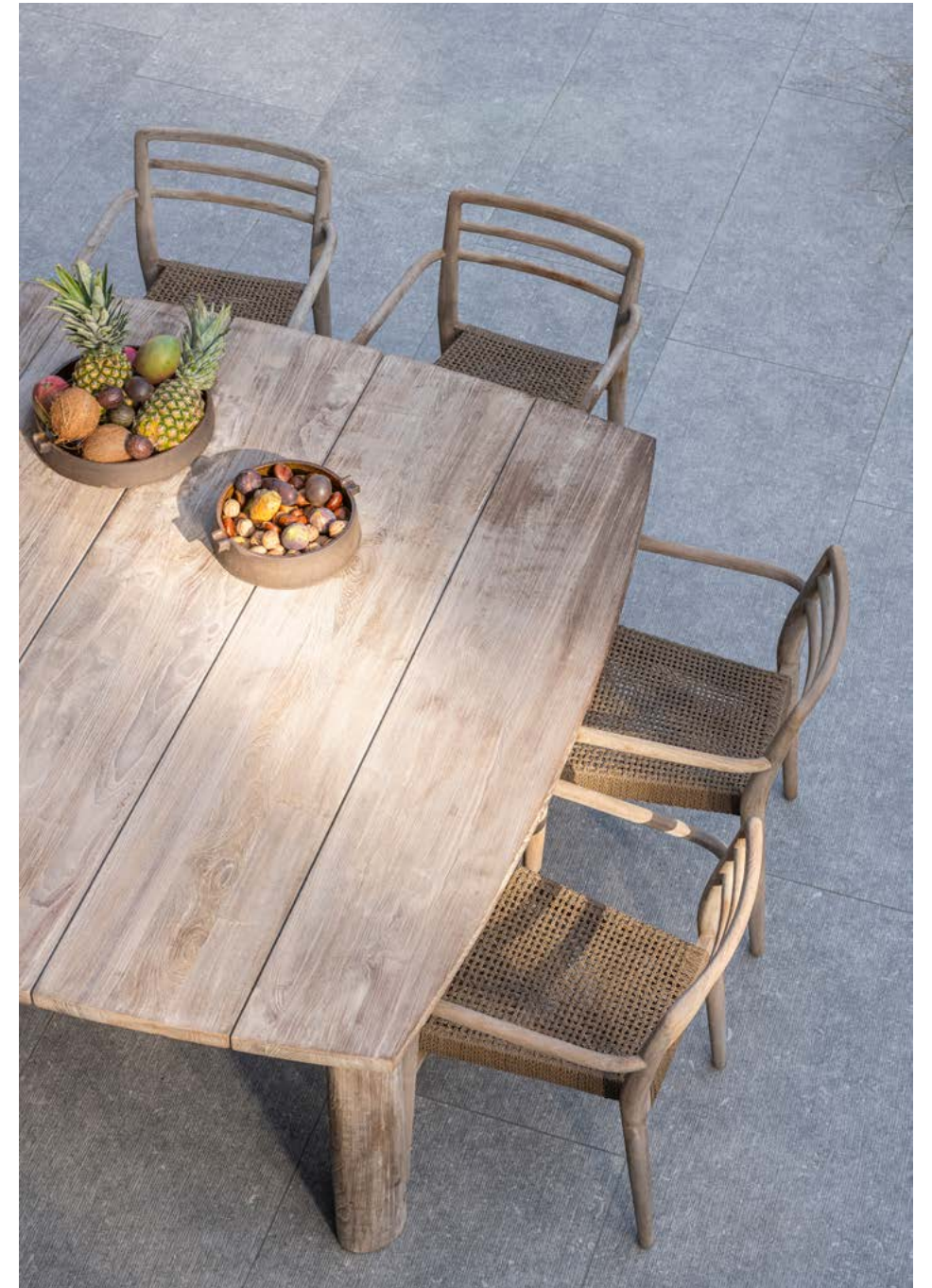


ARMCHAIR MARIO | P. 184 | CUSHION ARMCHAIR MARIO | P. 184 | BISTRO TABLE JACOB | P. 193
 CHAIR JARED | P. 182 | RECTANGULAR TABLE DENNIS SMALL | P. 191





Each outdoor table, meticulously designed and expertly finished, becomes a centrepiece of gatherings and celebrations, offering a perfect canvas for memorable moments under the open sky.





STACKABLE ARMCHAIR JARED | P. 182 | TABLE MIGUEL | P. 192



STOOL ASTI | P. 188 | LOW DINING BISTRO ROUND TABLE FAYE | P. 197 | BAR STOOL ASTI | P. 188





ARMCHAIR FAYE | P. 184 | STOOL ASTI | P. 188 | BENCH FAYE | P. 188 | CUSHION BENCH FAYE | P. 188





BENCH FAYE | P. 188 | CUSHION BENCH FAYE | P. 188 | STOOL FAYE | P. 188 | CUSHION STOOL FAYE | P. 188





PARK BENCH OSLO LARGE | P. 189



LOUNGE AREA

A lounge corner is a peaceful outdoor oasis that is delightful to escape to after an eventful day. The GOMMAIRE outdoor collection offers a selection of matching lounge furniture in teak, wicker, rope and fabric including benches, sofas and modular compositions.

Every piece of lounge furniture has its own cushion set to match the designs perfectly. These can be modified according to our extensive selection of outdoor fabrics, which we continuously keep updating with brand-new ones. Discover which options are available for your design of choice in the technical specifications section on page 180 and pick your preferred colour and pattern on page 174.

The GOMMAIRE lounge furniture is versatile and can be easily integrated in your preferred outside space, in combination with our wide range of outdoor coffee tables and accessories. Once fully furnished and decorated, your lounge corner will give you the opportunity to unwind completely.

As an extension of last year's indoor version, Swivel and Sofa Jules take this beautiful design of unique lines, sturdy teak wood and a touch of retro outdoors to be enjoyed in the sun. Add the new XL or limited XXL edition of Coffee Table Samba with its natural allure and you have a beautiful, organic sanctuary.

Let the lounge settings on the following pages astound and inspire you. All technical specifications, fabric customisation options and maintenance advice can be found at the end of the catalogue.



THE ACTUAL COLOURS MAY VARY FROM IMAGES SHOWN,
DIMENSIONS ARE INDICATIVE AND MAY DIFFER FROM REALITY.



1-SEATER MARIO | P. 206 | CUSHION SET 1-SEATER MARIO | P. 207 | 2-SEATER MARIO | P. 206 | CUSHION SET 2-SEATER MARIO | P. 207
3-SEATER MARIO | P. 206 | CUSHION SET 3-SEATER MARIO | P. 207 | COFFEE TABLE NATURAL SHAPE | P. 203



1-SEATER MARIO | P. 206 | CUSHION SET 1-SEATER MARIO | P. 207 | 2-SEATER MARIO | P. 206 | CUSHION SET 2-SEATER MARIO | P. 207
RECTANGULAR COFFEE TABLE FLOOR SMALL - LARGE | P. 198 | COFFEE TABLE BAMBA | P. 201



1-SEATER MARIO | P. 206 | CUSHION SET 1-SEATER MARIO | P. 207 | 2-SEATER MARIO | P. 206 | CUSHION SET 2-SEATER MARIO | P. 207
 RECTANGULAR COFFEE TABLE FLOOR SMALL - LARGE | P. 198 | COFFEE TABLE JACOBA | P. 199 | DECO CUSHIONS | P. 224

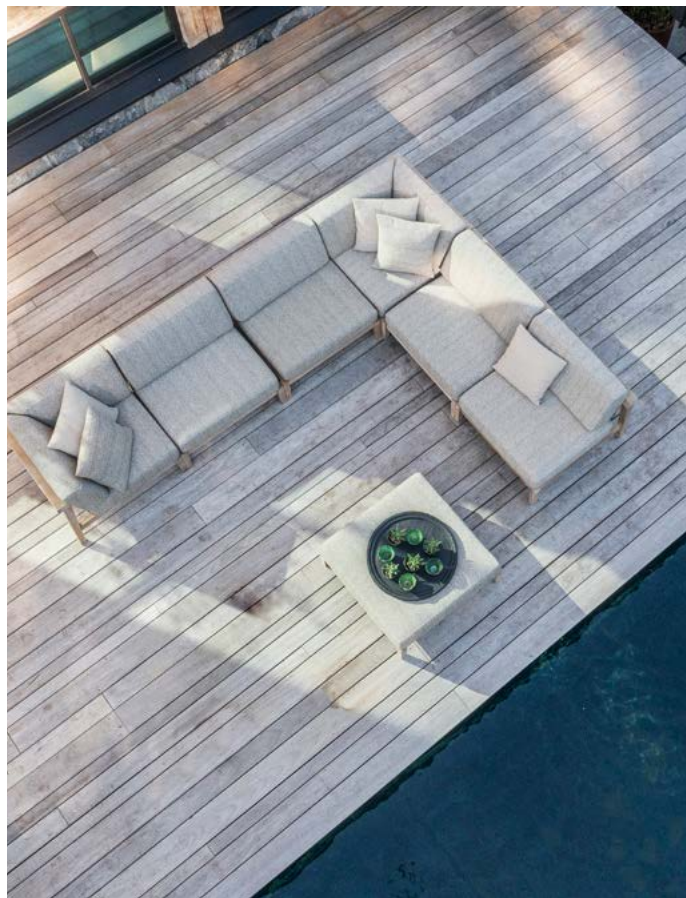


Crafted to provide a haven for relaxation and contemplation, our lounge furniture offers a calming sense of rustic elegance, combined with extraordinary comfort.



1-SEATER COPENHAGUE | P. 210 | CUSHION SET 1-SEATER COPENHAGUE | P. 211 | CENTER COPENHAGUE | P. 210 | CUSHION SET CENTER COPENHAGUE | P. 211
CORNER COPENHAGUE | P. 210 | CUSHION SET CORNER COPENHAGUE | P. 211 | OTTOMAN COPENHAGUE | P. 210 | CUSHION SET OTTOMAN COPENHAGUE | P. 211
DECO CUSHIONS | P. 224 | SQUARE POUF / SIDE TABLE | P. 223





Complete with classy coffee tables, our lounge sets offer the perfect spot to read a book, enjoy a refreshing beverage, or have cherished conversations.



2-SEATER COPENHAGUE | P. 210 | CUSHION SET 2-SEATER COPENHAGUE | P. 211
COFFEE TABLE ANTON SET OF 3 | P. 199





EASY CHAIR FELINE | P. 214 | CUSHION SET EASY CHAIR FELINE | P. 215 | COFFEE TABLE ROOT BALL | P. 203



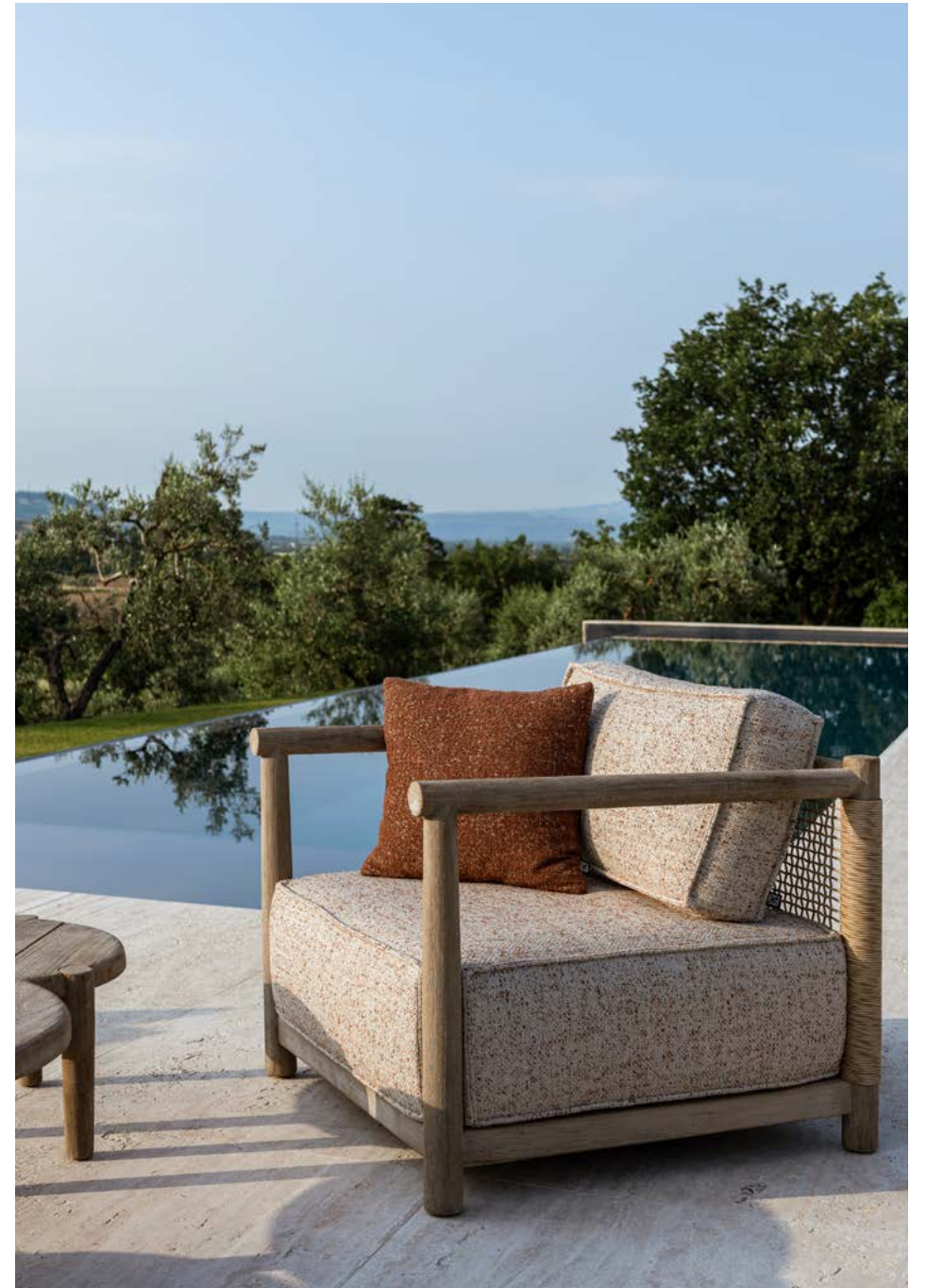
EASY CHAIR FELINE | P. 214 | CUSHION SET EASY CHAIR FELINE | P. 215 | COFFEE TABLE ROOT BALL | P. 203





SOFA MIA 3-SEATER | P. 214 | CUSHION SET SOFA MIA 3-SEATER | P. 215 | SQUARE POUF / SIDETABLE | P. 223 | DECO CUSHIONS | P. 224
SIDE TABLE DOBLO SMALL - MEDIUM - LARGE | P. 200 | TABLE JACOBA LARGE | P. 190 | ARMCHAIR MARIO ROPE | P. 184





LOUNGE CAROL 1-SEATER | P. 204 | CUSHION LOUNGE CAROL 1-SEATER | P. 205 | LOUNGE CAROL 2-SEATER | P. 204
CUSHION LOUNGE CAROL 2-SEATER | P. 205 | DECO CUSHIONS | P. 224 | COFFEE TABLE CAROL | P. 198
1-SEATER MIEKE | P. 208 | CUSHION SET 1-SEATER MIEKE | P. 209



SOFA L-SHAPE MIEKE | P. 208 | CUSHION SET SOFA L-SHAPE MIEKE | P. 209 | DECO CUSHIONS | P. 224 | CONSOLE ROLF | P. 219
COFFEE TABLE FLOOR SET OF 3 | P. 199 | HANGING LAMP DISC SMALL - LARGE | P. 222 | HANGING BASKET DISC | P. 222



1-SEATER MIEKE | P. 208 | CUSHION SET 1-SEATER MIEKE | P. 209 | SOFA L-SHAPE MIEKE | P. 208 | CUSHION SET SOFA L-SHAPE MIEKE | P. 209
 DECO CUSHIONS | P. 224 | COFFEE TABLE FLOOR SET OF 3 | P. 199 | HANGING LAMP DISC SMALL - LARGE | P. 222 | HANGING BASKET DISC | P. 222
 PLANTER BASKET ERIC | P. 220

The teak wood used in our coffee tables harmoniously complements the seating elements, creating a cohesive and visually striking ensemble that elevates the space.



SOFA MIA 3-SEATER | P. 214 | CUSHION SET SOFA MIA 3-SEATER | P. 215 | COFFEE TABLE DOVETAIL | P. 199
1-SEATER ALABAMA | P. 204 | CUSHION SET 1-SEATER ALABAMA | P. 205 | DECO CUSHIONS | P. 224





1-SEATER ALABAMA | P. 204 | CUSHION SET 1-SEATER ALABAMA | P. 205 | 2,5-SEATER ALABAMA | P. 204
CUSHION SET 2,5-SEATER ALABAMA | P. 205 | SQUARE COFFEE TABLE FLOOR SMALL - LARGE | P. 198





LOUNGE MAGNUS | P. 212 | CUSHION SET LOUNGE MAGNUS LARGE | P. 212 | OTTOMAN MAGNUS | P. 212 | CUSHION OTTOMAN MAGNUS | P. 212





LOUNGE MAGNUS | P. 212 | CUSHION SET LOUNGE MAGNUS SMALL - LARGE | P. 212
OTTOMAN MAGNUS | P. 212 | CUSHION OTTOMAN MAGNUS | P. 212 | DECO CUSHIONS | P. 224



SOFA DORAN | P. 214 | CUSHION SET SOFA DORAN | P. 215
COFFEE TABLE ROOT BALL | P. 203 | DECO CUSHIONS | P. 224



SOFA JULES | P. 208 | CUSHION SET SOFA JULES | P. 209 | SWIVEL JULES | P. 208 | CUSHION SET SWIVEL JULES | P. 209 | LOW TABLE SAMBA XXL | P. 201



SOFA JULES | P. 208 | CUSHION SET SOFA JULES | P. 209 | SWIVEL JULES | P. 208 | CUSHION SET SWIVEL JULES | P. 209 | LOW TABLE SAMBA XXL | P. 201



Whether placed on a terrace, by the poolside, or under a lush canopy of trees, our lounge collection transforms any outdoor area into a sophisticated retreat, where one can bask in the serenity of nature while indulging in the finest comforts of home.



SOFA EDGE | P. 206 | CUSHION SET SOFA EDGE | P. 207 | COFFEE TABLE / SUNBED EDGE | P. 199 | DECO CUSHIONS | P. 224





EASY CHAIR FIONA | P. 183 | CUSHION EASY CHAIR FIONA | P. 183 | DECO CUSHIONS | P. 224 | SQUARE COFFEE TABLE FLOOR SMALL | P. 198
EASY CHAIR ORSO | P. 213 | FOOTREST ORSO | P. 213



SUNLOUNGERS

Our sunloungers form the essence of luxurious outdoor relaxation. Crafted with precision and a keen eye for detail, each sunlounger seamlessly blends style and comfort. Made from the finest materials, including natural teak wood, wicker and high-quality fabrics, they are designed to withstand the elements while providing unparalleled comfort.

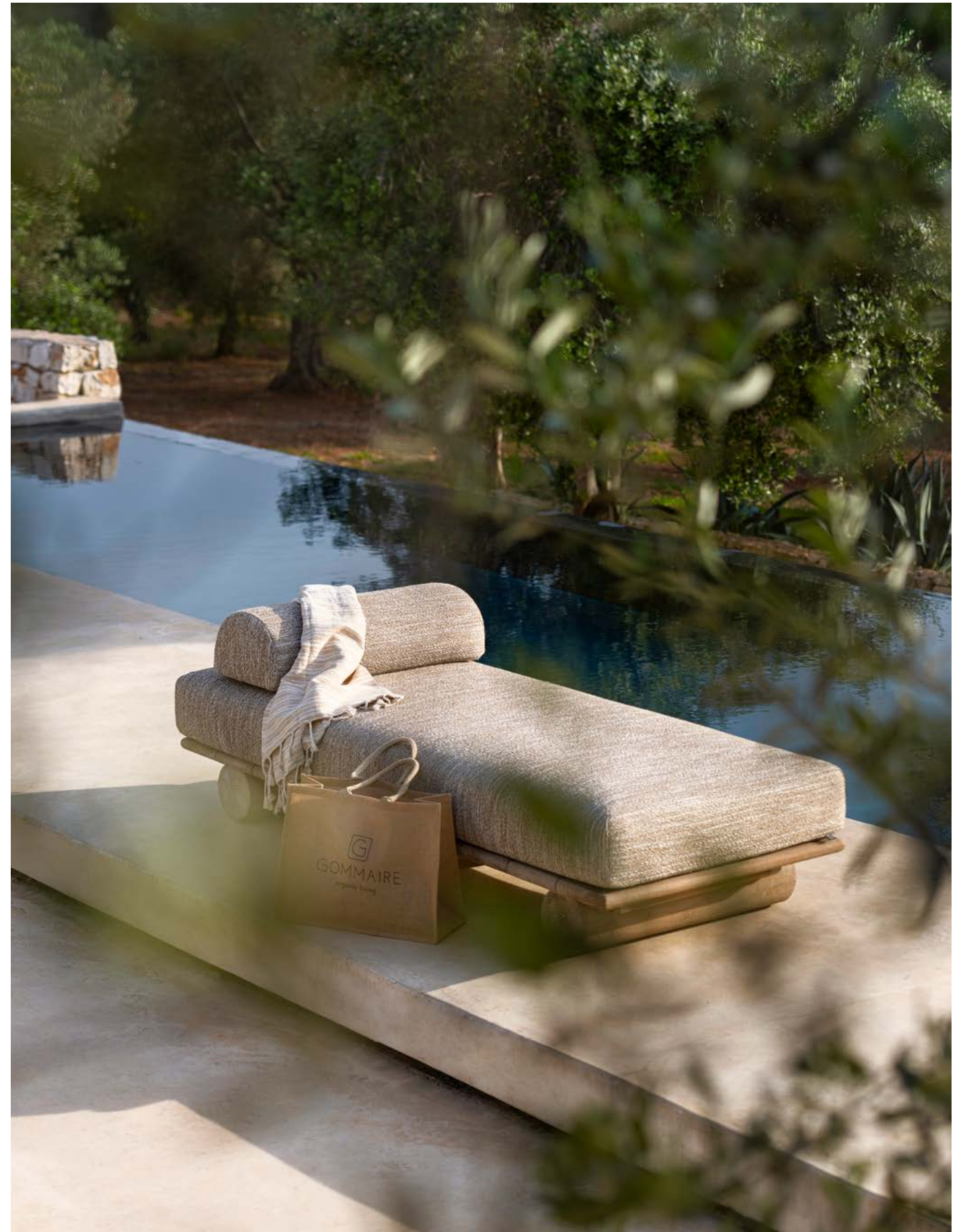
Whether by the poolside, on a terrace, or in a garden, our sunloungers offer a serene escape, with the perfect harmony of nature-inspired elegance and modern functionality.

Our latest designs are the embodiment of practicality and innovation. Sunbed Edge has a dual function: without its cushion, it can be used as a stylish coffee table. Moreover, the headrest can also be used as a divider in the middle. Sunbed Faye has a beautiful, distinctive wooden structure. Its streamlined armrests that merge into the sunbed's legs with integrated wheels, posed a real design challenge.

Indulge in the ultimate lounging experience on the following pages. All technical specifications, fabric customisation options and maintenance advice can be found at the end of the catalogue.



THE ACTUAL COLOURS MAY VARY FROM IMAGES SHOWN.
DIMENSIONS ARE INDICATIVE AND MAY DIFFER FROM REALITY.

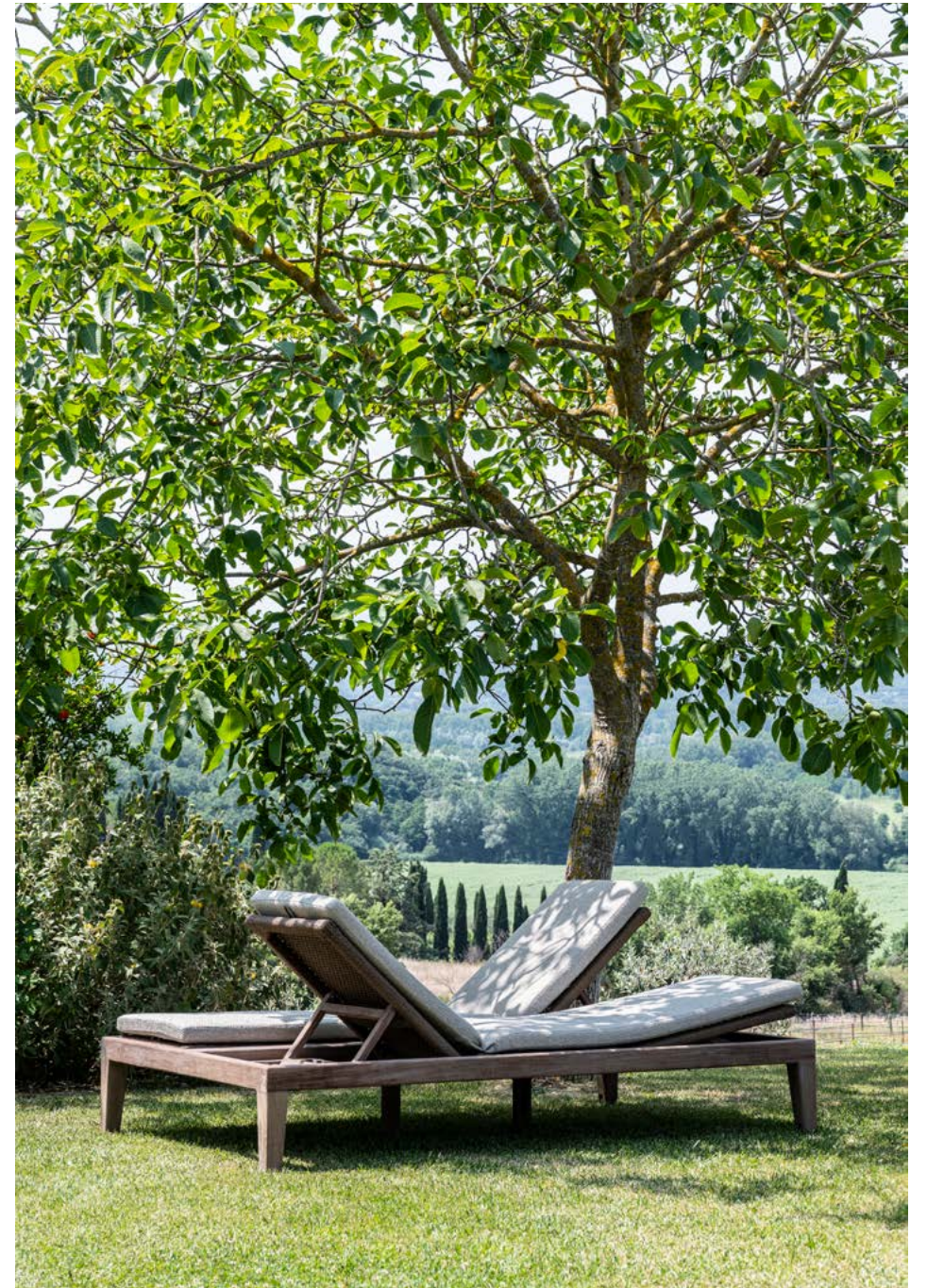




An innovative blend of modern aesthetics and ergonomic comfort. Sleek lines and durable craftsmanship. The perfect balance between style and functionality. Our sunlounger designs redefine outdoor relaxation.

SUNLOUNGER LISA | P. 214 | CUSHION SUNLOUNGER LISA | P. 215 | SQUARE HARD POUF WITH FLUFFY PIPING | P. 223 | STONE TOP ZENO LARGE | P. 223









SUNLOUNGER MIEKE | P. 216 | CUSHION SUNLOUNGER MIEKE | P. 217 | DOUBLE SUNLOUNGER MIEKE | P. 216
 CUSHION DOUBLE SUNLOUNGER MIEKE | P. 217 | CUSHION HEADY | P. 224 | COFFEE TABLE ROOT CYLINDER | P. 203





DOUBLE SUNLOUNGER MIEKE | P. 216
CUSHION DOUBLE SUNLOUNGER MIEKE | P. 217
CUSHION HEADY | P. 224
SIDE TABLE PEBBLE LARGE | P. 202

Teak's warm tones and rich textures infuse each piece with natural grace. Premium fabrics ensure a comfortable seating experience. The incorporation of rattan or wicker details add a mesmerising, artisanal quality. All these elements combined create an inviting atmosphere in which one can unwind completely.



SIDE TABLE PEBBLE LARGE | P. 202 | DOUBLE SUNLOUNGER MIEKE | P. 216
CUSHION DOUBLE SUNLOUNGER MIEKE | P. 217 | CUSHION HEADY | P. 224







SUNBED FAYE | P. 216 | CUSHION SUNDBED FAYE INCL. HEADREST | P. 217 | SIDE TABLE LAYA SMALL - LARGE | P. 202



SUNBED FAYE | P. 216 | CUSHION SUNDBED FAYE INCL. HEADREST | P. 217 | SIDE TABLE LAYA SMALL | P. 202





ACCESSORIES

Attention to details will yield the greatest results. That also goes for your outdoor area. The right accessories can do wonders. Wooden planters, rattan baskets, deco cushions, poufs and more. Each and every piece will imbue your garden or terrace with added character.

Regarding our upholstered furniture and cushions, fabrics are specially selected for outdoor usage. They are both water repellent and colour-fast. Moreover, both the yarn and the quick-dry foam filling are of the highest quality, made to last. Still, we do recommend bringing them inside during long periods of bad weather. Each year, we update our fabric selection with fresh designs and colours, so be sure to browse through it from page 174 onwards.

Most GOMMAIRE outdoor accessories will get a desirable weathered look when placed outside. However, the lifespan of natural materials is limited when exposed to certain weather conditions. The rattan basket collection, for example, should be considered as semi-outdoor and should be placed indoors when weather conditions are unfavourable.

Planter Basket Apple shows off a fun new shape in beautiful hand-woven rattan and can be used to add some extra relief and colour contrast to your outdoor space, not to mention some extra greenery.

May the decorative settings on the following pages spark your imagination and give you an appetite for creation. All technical specifications, fabric customisation options and maintenance advice can be found at the end of the catalogue.



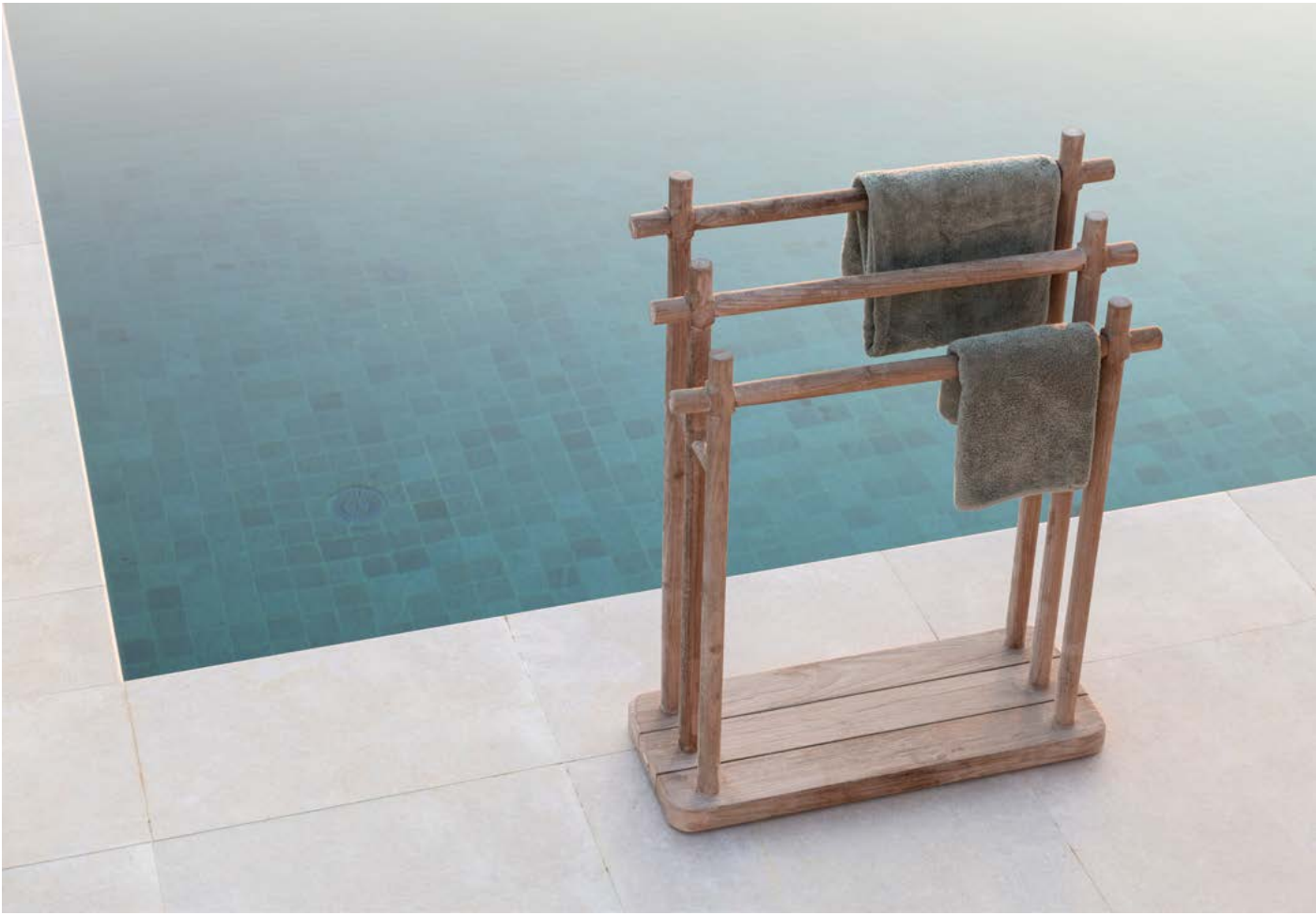
THE ACTUAL COLOURS MAY VARY FROM IMAGES SHOWN.
DIMENSIONS ARE INDICATIVE AND MAY DIFFER FROM REALITY.

Accessories serve as accents to elevate the beauty and functionality an outdoor area already possesses. As an extension of the magnificence of the outside world, there is power in each and every detail.



PLANTER BASKET ERIC | P. 220 | HANGING LAMP DISC SMALL - LARGE | P. 222
HANGING BASKET DISC | P. 222 | CONSOLE ROLF | P. 219







Each piece celebrates the allure of the outdoors while embodying the brand's ethos of timelessness and quality. Whether accentuating a cosy balcony, a chic terrace, or a lush garden, these accessories add an extra layer of elegance to one's outdoor living experience.



SQUARE SOFT POUF SMALL - LARGE WITHOUT PIPING | P. 223 | SIDE TABLE DOBLO SMALL - MEDIUM - LARGE | P. 200
SQUARE POUF / SIDETABLE | P. 223 | DECO CUSHIONS | P. 224





SIDE TABLE DOBLO SMALL - MEDIUM - LARGE | P. 200



*FABRIC AVAILABLE IN DIFFERENT CATEGORIES
SELECTION ON PAGES 174 -179

Cushions of first-rate quality, made from weather-resistant fabrics and a quick-dry foam filling add not only a burst of colour and pattern, but also provide an extra layer of comfort, ensuring that moments of relaxation become even more soothing.





PLANTER BASKET NELL SMALL - LARGE | P. 221 | PLANTER BASKET JULIA SMALL - MEDIUM - LARGE | P. 222





Rattan planters and baskets infuse outdoor spaces with an extra touch of organic charm. Handwoven with expert precision, the pieces celebrate the raw elegance of rattan with diverse, intricate weaving patterns, enthralling colour variations and a myriad of shapes.





PLANTER BASKET NELSON LARGE | P. 221 | HEXAGON PLANTER LOGAN LOW SMALL | P. 220
 HEXAGON PLANTER LOGAN HIGH | P. 220 | HEXAGON PLANTER LOGAN LOW LARGE | P. 220





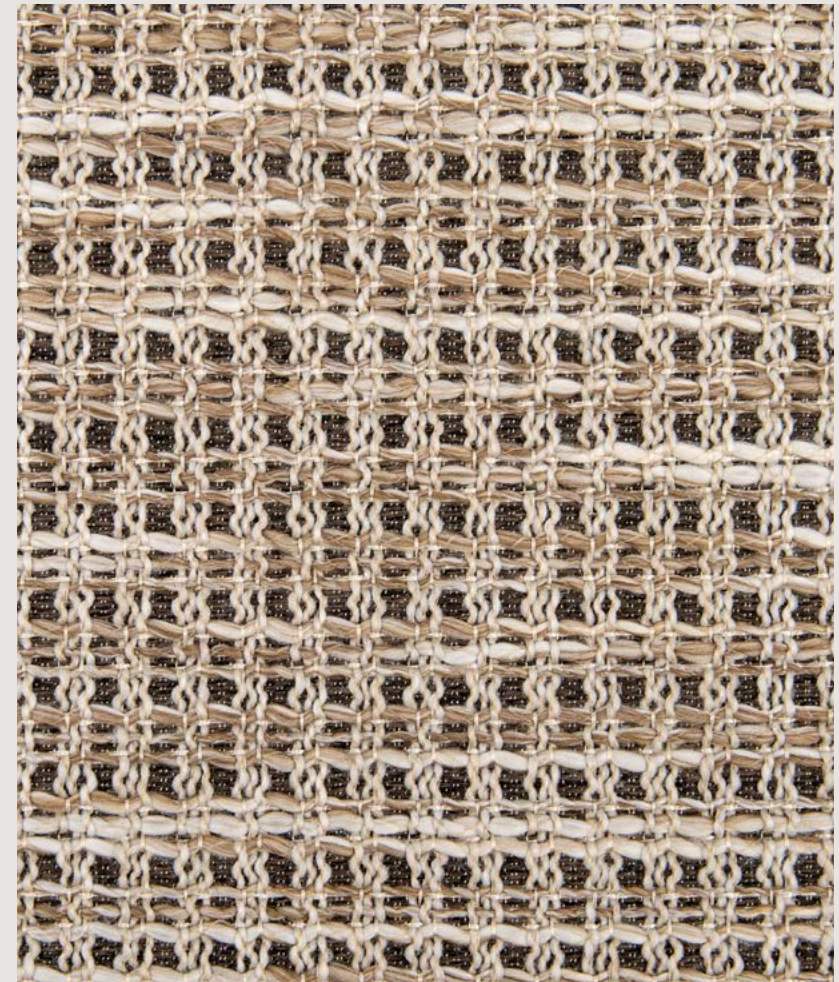
FABRIC SELECTION

All GOMMAIRE fabrics are designed and made in Europe with the highest quality in mind. Only the best yarn with a natural, luxurious feel is used and expertly woven into unique patterns that fit our designs perfectly.

Moreover, we update our fabric selection regularly, adding new and fresh colours and patterns to complement our furniture in the best possible manner.

Treatment for water-repellency and colour fastness is applied to fabrics designated for outdoor usage, as well as the addition of a quick-dry foam filling.

A wide range of outdoor fabrics is available in various price categories. Please consult the following pages for our current fabric range. The technical specifications in the next section reveal which fabric categories are applicable to which designs.



THE ACTUAL COLOURS MAY VARY FROM IMAGES SHOWN.
DIMENSIONS ARE INDICATIVE AND MAY DIFFER FROM REALITY.

OUTDOOR - FABRIC SELECTION



KBASIC LA CONCHA COL. 182



KNELOUT 02



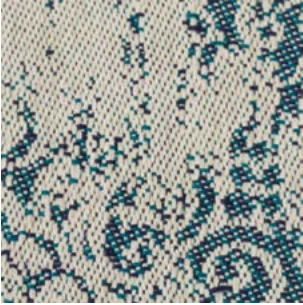
KNELOUT 05



KNELOUT 07



KNELOUT 08



KNELOUT 09



KNELOUT 11



KNELOUT 13



KNELOUT LUX 19



KNELOUT LUX 20



KNELOUT LUX 22



KNELOUT LUX 24



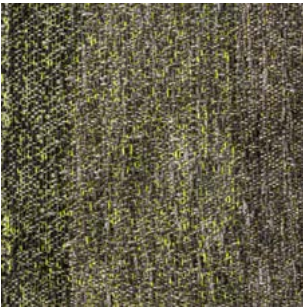
KNELOUT LUX 26



KNELOUT LUX 27



KNELOUT LUX 28



KNELOUT LUX 30

OUTDOOR - FABRIC SELECTION



KTEXTOUT 01



KTEXTOUT 02



KTEXTOUT 03



KTEXTOUT BLU 01 (CRIB 5)



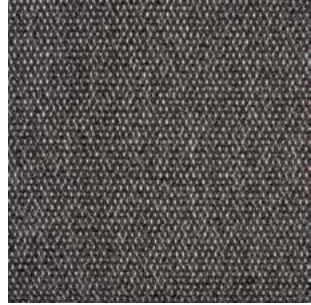
KTEXTOUT BLU 02 (CRIB 5)



KTEXTOUT BLU 03 (CRIB 5)



KTEXTOUT BLU 04 (CRIB 5)



KTEXTOUT BLU 05 (CRIB 5)



KTEXTOUT BLU 06 (CRIB 5)



KTEXTOUT BLU 07 (CRIB 5)



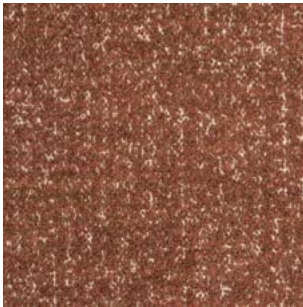
KTEXTOUT BLU 08 (CRIB 5)



KTEXTOUT TESSU 01



KTEXTOUT TESSU 02



KTEXTOUT TESSU 03



KTEXTOUT TESSU 04



KTEXTOUT TESSU 05

OUTDOOR - FABRIC SELECTION



KTEXTOUT TESSU 06



KTEXTOUT TESSU 07



KTEXTOUT TESSU 08



KTEXTOUT TESSU 09



KTEXTOUT TESSU 10



KTEXTOUT TESSU 11



KTEXTOUT TESSU 12



KTEXTOUT TESSU 13



KTEXTOUT TESSU 14



KTEXTOUT TESSU 15



KTEXTOUT TESSU 16



KTEXTOUT TESSU 17



KTEXTOUT TESSU 18



KTEXTOUT TESSU 19



KTEXTOUT TESSU 20



KTEXTOUT TESSU 21

OUTDOOR - FABRIC SELECTION



KTEXTOUT TESSU 22



KLIMO CICO 6



KLIMO CICO 7



KLIMO LATT 20





TECHNICAL SPECIFICATIONS

On the following pages, you will find the complete outdoor collection, including all technical details.

The length, width, height and inner diameter of each design are specified. That way, you can see whether a piece has the desired dimensions to fulfil the intended purpose. This section also lists the materials the items are made of and the colour or finish that was used. Since most of our items are handmade, dimensions and colours may vary slightly from those indicated due to the artisanal manufacturing process.

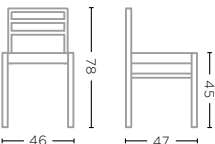
Lastly, you can use the designated codes and fabric overview in the previous section to see what options you have in terms of cushion covers and upholstery.

Should you have any additional questions, please do not hesitate to contact your local GOMMAIRE retailer or our Customer Service Department.



CHAIR JARED
G405-PE-AW (P. 69)

TEAK NATURAL GREY /
PE WICKER ANTIQUE WEED
W46 X D47 X H78 CM



CUSHION CHAIR JARED
G405-KBASICQD / KLIMOQD /
KNELOUTQD / KNELOUTLUXQD /
KTEXTOUTQD*
W44 X D40 X H3 CM

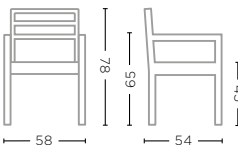


CUSHION BACKREST CHAIR JARED
G405-BACK-KBASICQD / KLIMOQD /
KNELOUTQD / KNELOUTLUXQD /
KTEXTOUTQD*
W34 X D2 X H15 CM



STACKABLE ARMCHAIR JARED
G405A-PE-AW (P. 70-71, 72-73)

TEAK NATURAL GREY /
PE WICKER ANTIQUE WEED
W58 X D54 X H78 CM



CUSHION STACKABLE ARMCHAIR JARED
G405A-KBASICQD / KLIMOQD /
KNELOUTQD / KNELOUTLUXQD /
KTEXTOUTQD*
W43 X D45 X H2 CM

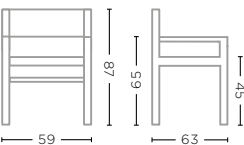


CUSHION BACKREST STACKABLE ARMCHAIR JARED
G405A-BACK-KBASICQD / KLIMOQD /
KNELOUTQD / KNELOUTLUXQD /
KTEXTOUTQD*
W44 X D2 X H15 CM



STACKABLE ARMCHAIR MIEKE
G657-PE-NAT (P. 56-57, 58-59)

TEAK NATURAL GREY /
PE WICKER SAND
W59 X D63 X H87 CM

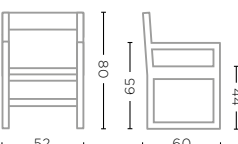


CUSHION STACKABLE ARMCHAIR MIEKE
G657-KBASICQD / KLIMOQD /
KNELOUTQD / KNELOUTLUXQD /
KTEXTOUTQD* (P. 58-59)
W48,5 X D51 X H3,5 CM



ARMCHAIR SALLY
G388-NAT (P. 38-39, 40-41, 44-45)

TEAK NATURAL GREY
W52 X D60 X H80 CM



CUSHION ARMCHAIR SALLY
G388-KBASICQD / KLIMOQD /
KNELOUTQD / KNELOUTLUXQD /
KTEXTOUTQD* (P. 38-39, 40-41,
44-45)
W44 X D49 X H4 CM

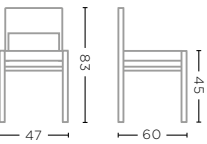


CUSHION BACKREST ARMCHAIR SALLY
G388-BACK-KBASICQD / KLIMOQD /
KNELOUTQD / KNELOUTLUXQD /
KTEXTOUTQD* (P. 40-41)
W39 X D2 X H12 CM



CHAIR FIONA
G510-PE-AW (P. 67)

TEAK NATURAL GREY /
PE WICKER ANTIQUE WEED
W47 X D60 X H83 CM

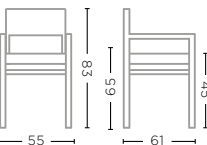


CUSHION CHAIR FIONA
G510-KBASICQD / KLIMOQD /
KNELOUTQD / KNELOUTLUXQD /
KTEXTOUTQD* (P. 67)
W48 X D48 X H3 CM



ARMCHAIR FIONA
G510A-PE-AW (P. 42-43, 52-53, 66)

TEAK NATURAL GREY /
PE WICKER ANTIQUE WEED
W55 X D61 X H83 CM

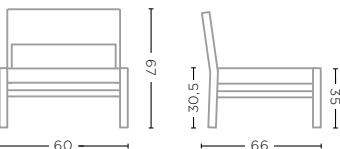


CUSHION ARMCHAIR FIONA
G510A-KBASICQD / KLIMOQD /
KNELOUTQD / KNELOUTLUXQD /
KTEXTOUTQD* (P. 43, 52-53, 66)
W55 X D48 X H3 CM



EASY CHAIR FIONA
G510E-PE-AW (P. 126)

TEAK NATURAL GREY /
PE WICKER ANTIQUE WEED
W60 X D66 X H67 CM

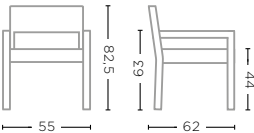


CUSHION EASY CHAIR FIONA
G510E-KBASICQD / KLIMOQD /
KNELOUTQD / KNELOUTLUXQD /
KTEXTOUTQD* (P. 126)
W60 X D52 X H4 CM



ARMCHAIR MARIO
G801-NAT (P. 26-27, 28-29, 68)

TEAK NATURAL GREY
W55 X D62 X H82,5 CM

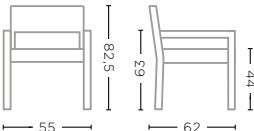


CUSHION ARMCHAIR MARIO
G801-KBASICQD / KLIMOQD /
KNELOUTQD / KNELOUTLUXQD /
KTEXTOUTQD* (P. 26-27, 68)
W54,5 X D52,5 X H4 CM



ARMCHAIR MARIO ROPE
G801-RO-NAT (P. 30-31, 46-47, 103)

TEAK NATURAL GREY / ROPE
W55 X D62 X H82,5 CM

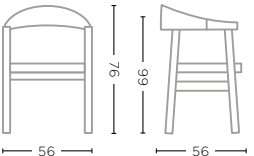


CUSHION ARMCHAIR MARIO
G801-KBASICQD / KLIMOQD /
KNELOUTQD / KNELOUTLUXQD /
KTEXTOUTQD* (P. 30-31, 46-47)
W54,5 X D52,5 X H4 CM



ARMCHAIR FAYE
G791-NAT (P. 22-23, 76)

TEAK NATURAL GREY
W56 X D56 X H76 CM



CUSHION ARMCHAIR FAYE
G791-KBASICQD / KLIMOQD /
KNELOUTQD / KNELOUTLUXQD /
KTEXTOUTQD*
W47 X D46 X H4 CM

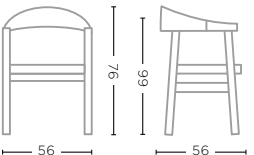


CUSHION BACKREST ARMCHAIR FAYE
G791-BACK-KBASICQD / KLIMOQD /
KNELOUTQD / KNELOUTLUXQD /
KTEXTOUTQD*
W37 X D4 X H16 CM



ARMCHAIR FAYE WICKER SEAT
G791-PE-NAT (P. 19, 20-21)

TEAK NATURAL GREY /
PE WICKER NATURAL
W56 X D56 X H76 CM



CUSHION ARMCHAIR FAYE
G791-KBASICQD / KLIMOQD /
KNELOUTQD / KNELOUTLUXQD /
KTEXTOUTQD*
W47 X D46 X H4 CM



CUSHION BACKREST ARMCHAIR FAYE
G791-BACK-KBASICQD / KLIMOQD /
KNELOUTQD / KNELOUTLUXQD /
KTEXTOUTQD*
W37 X D4 X H16 CM



CUSHION EASY CHAIR FAYE
G793-KBASICQD / KLIMOQD /
KNELOUTQD / KNELOUTLUXQD /
KTEXTOUTQD* (P. 16-17, 18)
W54 X D55 X H4 CM

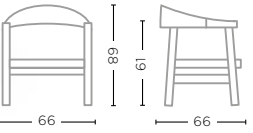


CUSHION BACKREST EASY CHAIR FAYE
G793-BACK-KBASICQD / KLIMOQD /
KNELOUTQD / KNELOUTLUXQD /
KTEXTOUTQD* (P. 18)
W37 X D4 X H16 CM



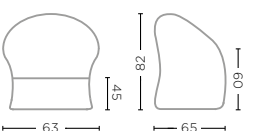
EASY CHAIR FAYE
G793-NAT (P. 16-17, 18)

TEAK NATURAL GREY
W66 X D66 X H68 CM



ARMCHAIR JENNA
G674-CLR-PE (P. 37)

CL PE WICKER NATURAL
W63 X D65 X H82 CM

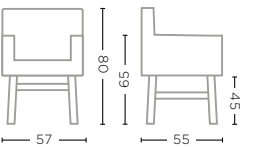


CUSHION ARMCHAIR JENNA
G674-KBASICQD / KLIMOQD /
KNELOUTQD / KNELOUTLUXQD /
KTEXTOUTQD* (P. 37)
W44 X D50 X H4 CM



ARMCHAIR CHARLY
G419-PE-BGR (P. 24-25, 63)

TEAK NATURAL GREY /
PE WICKER BROWN GREEN
W57 X D55 X H80 CM

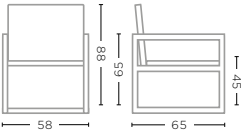


CUSHION ARMCHAIR CHARLY
G419-KBASICQD / KLIMOQD /
KNELOUTLUXQD / KNELOUTQD /
KTEXTOUTQD* (P. 24-25, 63)
W38 X D44 X H3 CM



ARMCHAIR CARLO UPHOLSTERED
G555A-SUNCANVASQD (P. 36)

TEAK NATURAL GREY / CANVAS
W58 X D65 X H88 CM



PAPYRUS



ASH



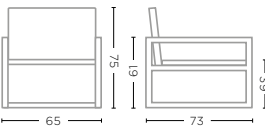
MOSS

SOME DIFFERENT COLOURED THREADS WOVEN INTO THE FABRIC MIGHT APPEAR DUE TO RECYCLED NATURE OF SUNBRELLA FABRICS



EASY CHAIR CARLO
G555E-RO-NAT (P. 32-33, 34-35)

TEAK NATURAL GREY / ROPE
W65 X D73 X H75 CM

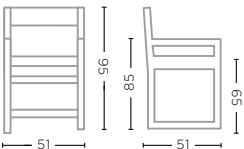


CUSHION SET EASY CHAIR CARLO
G555E-KBASICQD / KLIMOQD /
KNELOUTQD / KNELOUTLUXQD /
KTEXTOUTQD* (P. 32-33, 34-35)
W48,5 X D55 X H3 CM
W48,5 X D12 X H34 CM



BAR CHAIR SALLY
G388B-NAT (P. 49)

TEAK NATURAL GREY
W51 X D51 X H95 CM



CUSHION BAR CHAIR SALLY
G388B-KBASICQD / KLIMOQD /
KNELOUTQD / KNELOUTLUXQD /
KTEXTOUTQD* (P. 49)
W46 X D44 X H4,5 CM

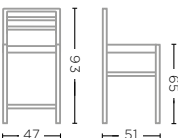


CUSHION BACKREST BAR CHAIR SALLY
G388B-BACK-KBASICQD / KLIMOQD /
KNELOUTQD / KNELOUTLUXQD /
KTEXTOUTQD* (P. 49)
W37 X D4 X H14 CM



BAR CHAIR JARED
G405B-PE-AW (P. 50-51)

TEAK NATURAL GREY /
PE WICKER ANTIQUE WEED
W47 X D51 X H93 CM



CUSHION BAR CHAIR JARED
G405B-KBASICQD / KLIMOQD /
KNELOUTQD / KNELOUTLUXQD /
KTEXTOUTQD* (P. 50-51)
W46 X D41 X H2 CM

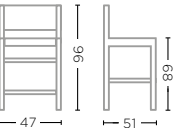


CUSHION BACKREST BAR CHAIR JARED
G405B-BACK-KBASICQD / KLIMOQD /
KNELOUTQD / KNELOUTLUXQD /
KTEXTOUTQD* (P. 51)
W33 X D2 X H16 CM



BAR CHAIR MIEKE
G720B-PE-NAT (P. 54-55)

TEAK NATURAL GREY /
PE WICKER SAND
W47 X D51 X H96 CM

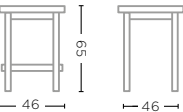


CUSHION BAR CHAIR MIEKE
G720B-KBASICQD / KLIMOQD /
KNELOUTQD / KNELOUTLUXQD /
KTEXTOUTQD*
W46 X D44 X H3,5 CM



BAR STOOL ALEXI
G256B-NAT (P. 62, 64-65)

TEAK NATURAL GREY
W46 X D46 X H65 CM



CUSHION BAR STOOL ALEXI
G256B-KBASICQD / KLIMOQD /
KNELOUTQD / KNELOUTLUXQD /
KTEXTOUTQD* (P. 62, 64-65)
W40 X D40 X H2 CM



BAR STOOL ALEX
G671-NAT (P. 60)

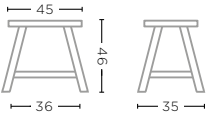
TEAK NATURAL GREY
Ø34 X H65 CM





STOOL FAYE
G789-NAT (P. 78-79)

TEAK NATURAL GREY
W45 X D35 X H46 CM

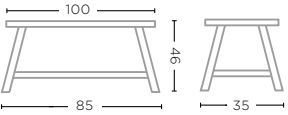


CUSHION STOOL FAYE
G789-KBASICQD / KLIMOQD /
KNELOUTQD / KNELOUTLUXQD /
KTEXTOUTQD* (P. 78-79)
W45 X D35 X H3 CM



BENCH FAYE
G790-BENCH-NAT (P. 77, 78-79)

TEAK NATURAL GREY
W100 X D35 X H46 CM

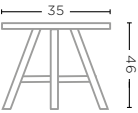


CUSHION BENCH FAYE
G790-BENCH-KBASICQD / KLIMOQD /
KNELOUTQD / KNELOUTLUXQD /
KTEXTOUTQD* (P. 77, 78-79)
W100 X D35 X H3 CM



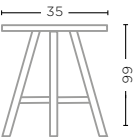
STOOL ASTI
G799-NAT (P. 74, 76)

TEAK NATURAL GREY
Ø35 X H46 CM



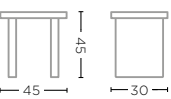
BAR STOOL ASTI
G800-NAT (P. 75)

TEAK NATURAL GREY
Ø35 X H66 CM



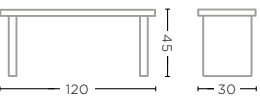
STOOL PEBBLE
G662-NAT (P. 81)

TEAK NATURAL GREY
W45 X D30 X H45 CM



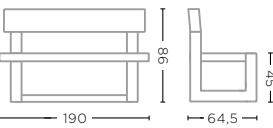
BENCH PEBBLE
G662-BENCH-NAT (P. 80)

TEAK NATURAL GREY
W120 X D30 X H45 CM



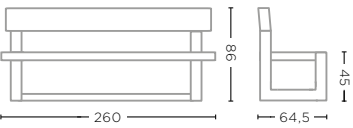
PARK BENCH OSLO SMALL
G658S-NAT

TEAK NATURAL GREY
W190 X D64,5 X H86 CM



PARK BENCH OSLO LARGE
G658L-NAT (P. 82-83)

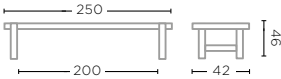
TEAK NATURAL GREY
W260 X D64,5 X H86 CM





BENCH JACOBA SMALL
G798S-BENCH-NAT

TEAK NATURAL GREY
W250 X D42 X H46 CM



BENCH JACOBA LARGE
G798L-BENCH-NAT (P. 28-29)

TEAK NATURAL GREY
W310 X D42 X H46 CM

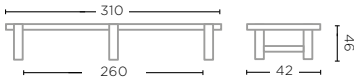


TABLE JACOBA SMALL
G795S-NAT

TEAK NATURAL GREY
L250 X W112 X H76 CM

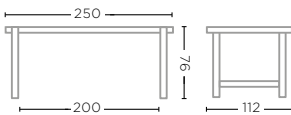


TABLE JACOBA LARGE
G795L-NAT (P. 28-29, 30-31, 103)

TEAK NATURAL GREY
L310 X W112 X H76 CM

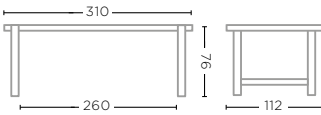
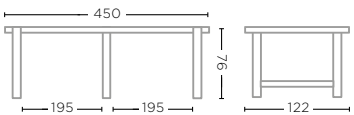


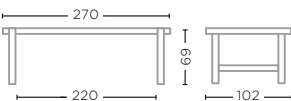
TABLE JACOBA XL
G795XL-NAT

TEAK NATURAL GREY
L450 X W122 X H76 CM



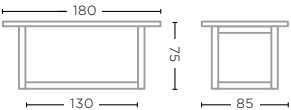
LOW DINING TABLE JACOBA
G796-NAT (P. 32-33)

TEAK NATURAL GREY
L270 X W102 X H69 CM



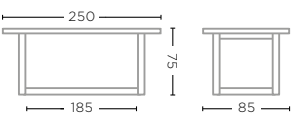
RECTANGULAR TABLE DENNIS SMALL
G343S-RECT-NAT (P. 46-47, 69)

TEAK NATURAL GREY
L180 X W85 X H75 CM



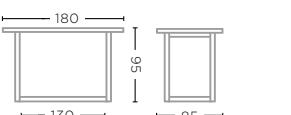
RECTANGULAR TABLE DENNIS LARGE
G343L-RECT-NAT (P. 45)

TEAK NATURAL GREY
L250 X W85 X H75 CM



RECTANGULAR BAR TABLE DENNIS SMALL
G343S-BAR-NAT (P. 50-51)

TEAK NATURAL GREY
L180 X W85 X H95 CM



RECTANGULAR BAR TABLE DENNIS LARGE
G343L-BAR-NAT

TEAK NATURAL GREY
L220 X W85 X H95 CM

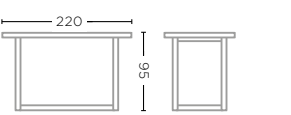
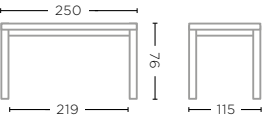




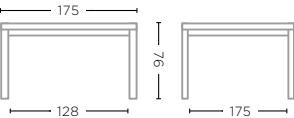
TABLE MIGUEL
G667-NAT (P. 72-73)

TEAK NATURAL GREY
L250 X W115 X H76 CM



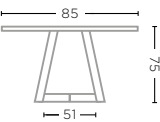
SQUARE TABLE MIGUEL
G668-NAT (P. 70-71)

TEAK NATURAL GREY
L175 X W175 X H76 CM



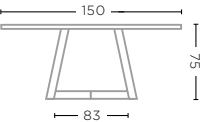
BISTRO TABLE DENNIS
G343-BIS-NAT (P. 42)

TEAK NATURAL GREY
L85 X W85 X H75 CM



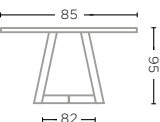
SQUARE TABLE DENNIS
G343-NAT (P. 44)

TEAK NATURAL GREY
L150 X W150 X H75 CM



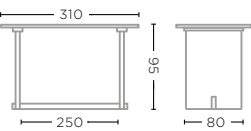
BISTRO BAR TABLE DENNIS
G343-BAR-BIS-NAT (P. 49)

TEAK NATURAL GREY
L85 X W85 X H95 CM



BAR TABLE ALEXI LARGE
G255L-BAR-NAT (P. 62, 64-65)

TEAK NATURAL GREY
L310 X W80 X H95 CM



BISTRO TABLE JACOB
G050R-BIS-NAT (P. 68)

TEAK NATURAL GREY
L80 X W80 X H75 CM

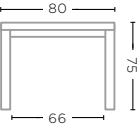


TABLE JACOB SMALL
G050S-NAT (P. 66)

TEAK NATURAL GREY
L250 X W90 X H75 CM

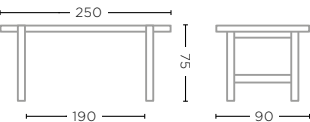


TABLE JACOB LARGE
G050L-NAT

TEAK NATURAL GREY
L290 X W90 X H75 CM

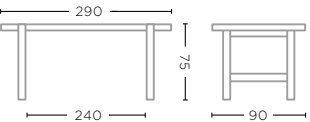
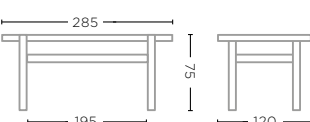


TABLE ABE
G585-NAT (P. 38-39, 40-41)

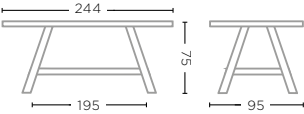
TEAK NATURAL GREY
L285 X W120 X H75 CM





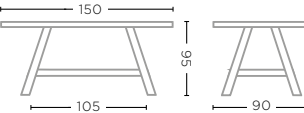
DINING TABLE MIEKE
G718-NAT (P. 58-59)

TEAK NATURAL GREY
L244 X W95 X H75 CM



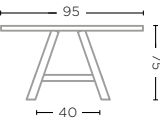
RECTANGULAR BAR TABLE MIEKE
G719-BAR-NAT (P. 54-55)

TEAK NATURAL GREY
L150 X W90 X H95 CM



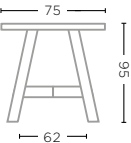
BISTRO TABLE MIEKE
G717-BIS-NAT (P. 56-57)

TEAK NATURAL GREY
L95 X W95 X H75 CM



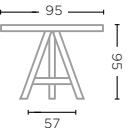
ROUND BAR TABLE ALEX
G670-NAT (P. 60)

TEAK NATURAL GREY
Ø75 X H95 CM



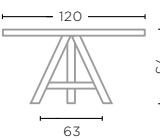
ROUND BAR TABLE ANTON
G193-BAR-NAT (P. 61)

TEAK NATURAL GREY
Ø95 X H95 CM



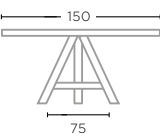
ROUND TABLE ANTON SMALL
G193S-NAT

TEAK NATURAL GREY
Ø120 X H75 CM



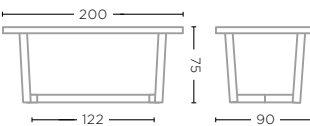
ROUND TABLE ANTON LARGE
G193L-NAT (P. 63)

TEAK NATURAL GREY
Ø150 X H75 CM



OVAL TABLE DAN SMALL
G026S-NAT-OUT (P. 67)

TEAK NATURAL GREY
L200 X W90 X H75 CM



OVAL TABLE DAN LARGE
G026L-NAT-OUT

TEAK NATURAL GREY
L260 X W105 X H75 CM

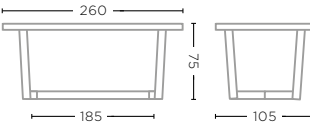


TABLE MIA LARGE
G347L-NAT (P. 26-27)

TEAK NATURAL GREY
L300 X W90 X H75 CM

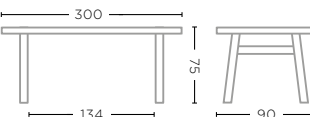
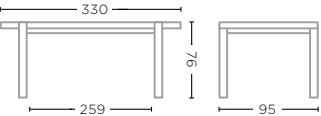




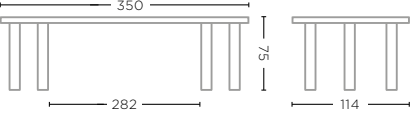
TABLE MAXIMUS
G500-NAT (P. 43, 52-53)

TEAK NATURAL GREY
L330 X W95 X H76 CM



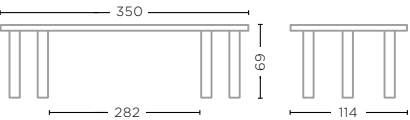
DINING TABLE CARLO
G669-NAT (P. 36-37)

TEAK NATURAL GREY
L350 X D114 X H75 CM



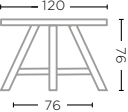
LOW TABLE CARLO
G556-NAT (P. 34-35)

TEAK NATURAL GREY
L350 X W114 X H69 CM



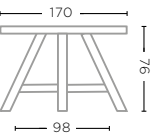
ROUND TABLE FAYE
G784-NAT (P. 22-23, 24)

TEAK NATURAL GREY
Ø120 X H76 CM



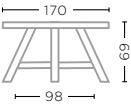
ROUND TABLE FAYE XL
G784XL-NAT

TEAK NATURAL GREY
Ø170 X H76 CM



LOW DINING ROUND TABLE FAYE XL
G785XL-NAT (P. 16-17)

TEAK NATURAL GREY
Ø170 X H69 CM



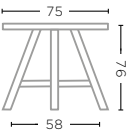
LAZY FAYE (TURNABLE)
G786-NAT (P. 16-17)

TEAK NATURAL GREY
Ø70 X H5 CM



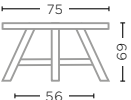
BISTRO ROUND TABLE FAYE
G787-NAT (P. 19, 20-21)

TEAK NATURAL GREY
Ø75 X H76 CM



LOW DINING BISTRO ROUND TABLE FAYE
G788-NAT (P. 18, 74)

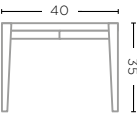
TEAK NATURAL GREY
Ø75 X H69 CM





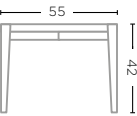
SQUARE COFFEE TABLE FLOOR SMALL
G561S-NAT (P. 113, 126)

TEAK NATURAL GREY
L40 X W40 X H35 CM



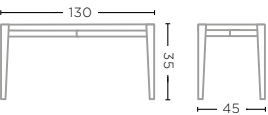
SQUARE COFFEE TABLE FLOOR LARGE
G561L-NAT (P. 113)

TEAK NATURAL GREY
L55 X W55 X H42 CM



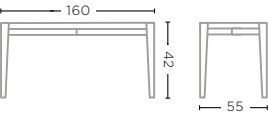
RECTANGULAR COFFEE TABLE FLOOR SMALL
G561S-RECT-NAT (P. 88, 90)

TEAK NATURAL GREY
L130 X W45 X H35 CM



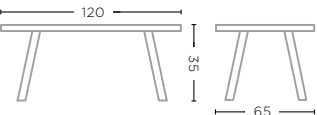
RECTANGULAR COFFEE TABLE FLOOR LARGE
G561L-RECT-NAT (P. 88, 90)

TEAK NATURAL GREY
L160 X W55 X H42 CM



COFFEE TABLE CAROL
G550-NAT (P. 104)

TEAK NATURAL GREY
L120 X W65 X H35 CM



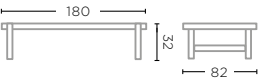
COFFEE TABLE / SUNBED EDGE
G802-NAT (P. 124-125)

TEAK NATURAL GREY
L200 X W85 X H22 CM



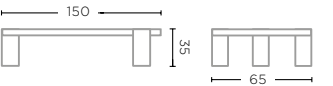
COFFEE TABLE JACOBA
G797-NAT (P. 91)

TEAK NATURAL GREY
L180 X W82 X H32 CM



COFFEE TABLE DOVETAIL
G042-NAT (P. 110)

TEAK NATURAL GREY
L150 X W65 X H35 CM



COFFEE TABLE ANTON SET OF 3
G326-SET-NAT (P. 96-97)

TEAK NATURAL GREY
Ø50 X H32 CM / Ø65 X H37 CM / Ø80 X H42 CM



COFFEE TABLE FLOOR SET OF 3
G503-SET-NAT (P. 106-107, 108-109)

TEAK NATURAL GREY
Ø50 X H33 CM / Ø65 X H37 CM / Ø80 X H42 CM



SIDE TABLE DOBLO SMALL
G714S-NAT (P. 102-103, 161, 162-163)

TEAK ROOT NATURAL GREY
L33 X W33 X H31 CM

SIDE TABLE DOBLO MEDIUM
G714M-NAT (P. 102-103, 161, 162-163)

TEAK ROOT NATURAL GREY
L33 X W33 X H37 CM

SIDE TABLE DOBLO LARGE
G714L-NAT (P. 102-103, 161, 162-163)

TEAK ROOT NATURAL GREY
L33 X W33 X H44 CM



COFFEE TABLE CUMI SMALL
G063S-NAT (P. 158)

TEAK ROOT NATURAL GREY
L30 X W30 X H45 CM

COFFEE TABLE CUMI MEDIUM
G063M-NAT (P. 158)

TEAK ROOT NATURAL GREY
L40 X W30 X H70 CM

COFFEE TABLE CUMI LARGE
G063L-NAT (P. 158)

TEAK ROOT NATURAL GREY
L50 X W60 X H100 CM



LOW TABLE SAMBA SMALL
G477S-NAT (P. 136-137)

TEAK ROOT NATURAL GREY
Ø50 X H28 CM

LOW TABLE SAMBA LARGE
G477L-NAT

TEAK ROOT NATURAL GREY
Ø50 X H35 CM



LOW TABLE SAMBA XL
G477XL-NAT

TEAK NATURAL GREY
Ø70 X H35 CM
Limited availability

LOW TABLE SAMBA XXL
G477XXL-NAT (P. 120-121, 122)

TEAK NATURAL GREY
Ø90 X H35 CM
Limited availability



COFFEE TABLE BAMBA
G810-NAT (P. 89)

TEAK NATURAL GREY
Ø50 X H40 CM



SIDE TABLE LAYA SMALL
G804S-NAT (P. 130, 146-147, 148-149)

TEAK NATURAL GREY
Ø35 X H40 CM



SIDE TABLE LAYA LARGE
G804L-NAT (P. 146-147)

TEAK NATURAL GREY
Ø40 X H45 CM



SIDE TABLE PEBBLE MEDIUM
G663M-NAT (P. 81)

TEAK NATURAL GREY
L52 X W38 X H40 CM



SIDE TABLE PEBBLE LARGE
G663L-NAT (P. 81, 140-141, 142-143, 144-145)

TEAK NATURAL GREY
L65 X W51 X H35 CM



COFFEE TABLE ROOT BALL
G062-NAT (P. 98-99, 100-101, 118-119)

TEAK ROOT NATURAL GREY
Ø60 X H40 CM



COFFEE TABLE NATURAL SHAPE
G165-NAT (P. 86-87)

TEAK ROOT NATURAL GREY
L85/100 X W35/45 X H40 CM



STOOL REX
G543-NAT (P. 159)

TEAK ROOT NATURAL GREY
Ø35 X H45 CM



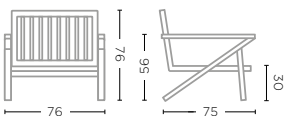
COFFEE TABLE ROOT CYLINDER
G064-NAT (P. 138)

TEAK ROOT NATURAL GREY
Ø30 X H40 CM



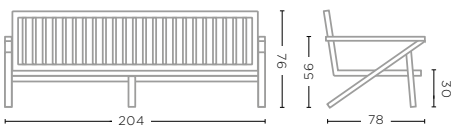
1-SEATER ALABAMA
G557-NAT (P. 111, 112)

TEAK NATURAL GREY
W76 X D75 X H76 CM



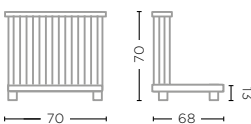
2,5-SEATER ALABAMA
G558-NAT (P. 112)

TEAK NATURAL GREY
W204 X D78 X H76 CM



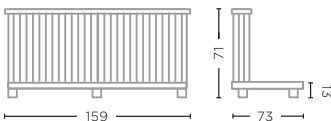
LOUNGE CAROL 1-SEATER
G406-NAT (P. 104)

TEAK NATURAL GREY
W70 X D68 X H70 CM



LOUNGE CAROL 2-SEATER
G549-NAT (P. 104)

TEAK NATURAL GREY
W159 X D73 X H71 CM



CUSHION SET 1-SEATER ALABAMA
G557-KBASICQD / KLIMOQD / KNELOUTQD /
KNELOUTLUXQD / KTEXTOUTQD* (P. 111, 112)

W60 X D65,5 X H12 CM
W60 X D16 X H38 CM



CUSHION SET 2,5-SEATER ALABAMA
G558-KBASICQD / KLIMOQD / KNELOUTQD /
KNELOUTLUXQD / KTEXTOUTQD* (P. 112)

W190 X D65,5 X H12 CM
W190 X D16 X H38 CM



CUSHION SEAT LOUNGE CAROL 1-SEATER
G406-KBASICQD / KLIMOQD / KNELOUTQD /
KNELOUTLUXQD / KTEXTOUTQD* (P. 104)

W70 X D65 X H30 CM

Deco cushions not included.



CUSHION LOUNGE CAROL 2-SEATER
G549-KBASICQD / KLIMOQD / KNELOUTQD /
KNELOUTLUXQD / KTEXTOUTQD* (P. 104)

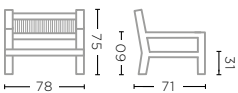
W159 X D73 X H30 CM

Deco cushions not included.



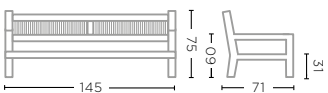
1-SEATER MARIO
G631-RO-NAT (P. 86-87, 88-89, 90-91)

TEAK NATURAL GREY / ROPE
W78 X D71 X H75 CM



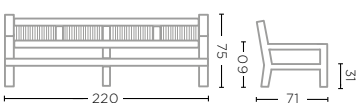
2-SEATER MARIO
G632S-RO-NAT (P. 86-87, 88, 90-91)

TEAK NATURAL GREY / ROPE
W145 X D71 X H75 CM



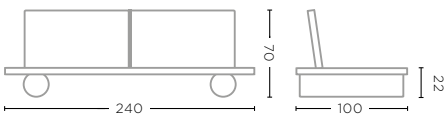
3-SEATER MARIO
G632L-RO-NAT (P. 86-87)

TEAK NATURAL GREY / ROPE
W220 X D71 X H75 CM



SOFA EDGE
G508-PE-AW (P. 124-125)

TEAK NATURAL GREY /
PE WICKER ANTIQUE WEED
W240 X D100 X H70 CM



CUSHION SET 1-SEATER MARIO
G631-KBASICQD / KLIMOQD / KNELOUTQD /
KNELOUTLUXQD / KTEXTOUTQD* (P. 86-87, 88-89, 90-91)

W66 X D68 X H15 CM
W67 X D13 X H40 CM



CUSHION SET 2-SEATER MARIO
G632S-KBASICQD / KLIMOQD / KNELOUTQD /
KNELOUTLUXQD / KTEXTOUTQD* (P. 86-87, 88, 90-91)

W136 X D68 X H15 CM
W137 X D13 X H40 CM



CUSHION SET 3-SEATER MARIO
G632L-KBASICQD / KLIMOQD / KNELOUTQD /
KNELOUTLUXQD / KTEXTOUTQD*

W211 X D68 X H15 CM
W212 X D13 X H40 CM



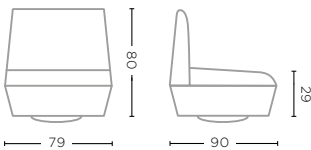
CUSHION SET SOFA EDGE
G508-KBASICQD / KLIMOQD / KNELOUTQD /
KNELOUTLUXQD / KTEXTOUTQD* (P. 124-125)

W240 X D82 X H20 CM
W210 X D32 X H20 CM



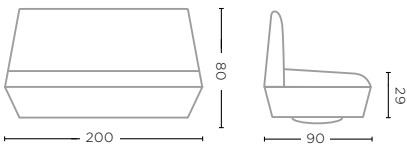
SWIVEL JULES
G812-NAT (P. 120-121, 122-123)

TEAK NATURAL GREY
W79 X D90 X H80 CM



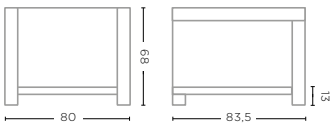
SOFA JULES
G813-NAT (P. 120-121, 122)

TEAK NATURAL GREY
W200 X D90 X H80 CM



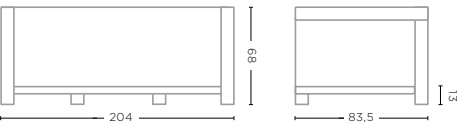
1-SEATER MIEKE
G709-PE-NAT (P. 105, 108-109)

TEAK NATURAL GREY / PE WICKER SAND
W80 X D83,5 X H68 CM



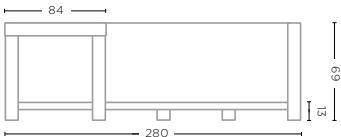
2,5-SEATER MIEKE
G710-PE-NAT

TEAK NATURAL GREY / PE WICKER SAND
W204 X D83,5 X H68 CM



SOFA L-SHAPE MIEKE
G711-PE-NAT (P. 106-107, 108-109)

TEAK NATURAL GREY / PE WICKER SAND
W280 X D84 X H69 CM



CUSHION SET SWIVEL JULES
G812-KBASICQD / KLIMOQD / KNELOUTQD /
KNELOUTLUXQD / KTEXTOUTQD* (P. 120-121, 122-123)

W70 X D77 X H15 CM
W70 X D13 X H45 CM



CUSHION SET SOFA JULES
G813-KBASICQD / KLIMOQD / KNELOUTQD /
KNELOUTLUXQD / KTEXTOUTQD* (P. 120-121, 122)

W195 X D70 X H15 CM
W190 X D13 X H45 CM



CUSHION SET 1-SEATER MIEKE
G709-KBASICQD / KLIMOQD / KNELOUTQD /
KNELOUTLUXQD / KTEXTOUTQD* (P. 105, 108-109)

W76 X D77 X H26 CM
W70 X D19 X H40 CM



CUSHION SET 2,5-SEATER MIEKE
G710-KBASICQD / KLIMOQD / KNELOUTQD /
KNELOUTLUXQD / KTEXTOUTQD*

W202 X D76 X H26 CM
W197 X D19 X H40 CM



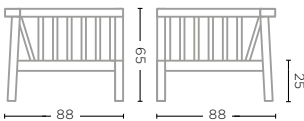
CUSHION SET SOFA L-SHAPE MIEKE
G711-KBASICQD / KLIMOQD / KNELOUTQD /
KNELOUTLUXQD / KTEXTOUTQD* (P. 106-107, 108-109)

W195 X D76 X H26 CM
W196 X D19 X H40 CM



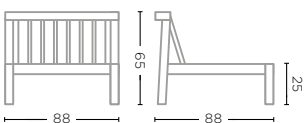
CORNER COPENHAGUE
G044-NAT (P. 93, 94-95)

TEAK NATURAL GREY
W88 X D88 X H65 CM



CENTER COPENHAGUE
G045-NAT (P. 93, 94-95)

TEAK NATURAL GREY
W88 X D88 X H65 CM



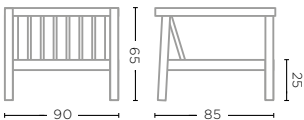
OTTOMAN COPENHAGUE
G046-NAT (P. 93, 94-95)

TEAK NATURAL GREY
W88 X D88 X H25 CM



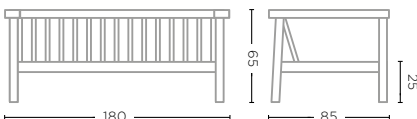
1-SEATER COPENHAGUE
G040-NAT (P. 92-93)

TEAK NATURAL GREY
W90 X D85 X H65 CM



2-SEATER COPENHAGUE
G041-NAT (P. 96-97)

TEAK NATURAL GREY
W180 X D85 X H65 CM



CUSHION SET CORNER COPENHAGUE
G044-KBASICQD / KLIMOQD / KNELOUTQD /
KNELOUTLUXQD / KTEXTOUTQD* (P. 93, 94-95)

W74 X D74 X H15 CM
W80 X D20 X H34 CM



CUSHION SET CENTER COPENHAGUE
G045-KBASICQD / KLIMOQD / KNELOUTQD /
KNELOUTLUXQD / KTEXTOUTQD* (P. 92, 94-95)

W88 X D74 X H15 CM
W88 X D20 X H34 CM



CUSHION SET OTTOMAN COPENHAGUE
G046-KBASICQD / KLIMOQD / KNELOUTQD /
KNELOUTLUXQD / KTEXTOUTQD* (P. 93, 94-95)

W88 X D88 X H15 CM



CUSHION SET 1-SEATER COPENHAGUE
G040-KBASICQD / KLIMOQD / KNELOUTQD /
KNELOUTLUXQD / KTEXTOUTQD* (P. 92-93)

W74 X D68 X H15 CM
W74 X D20 X H34 CM



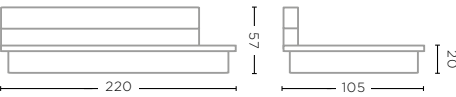
CUSHION SET 2-SEATER COPENHAGUE
G041-KBASICQD / KLIMOQD / KNELOUTQD /
KNELOUTLUXQD / KTEXTOUTQD* (P. 96-97)

W164 X D68 X H15 CM
W164 X D20 X H34 CM



LOUNGE MAGNUS
G428-NAT (P. 114-115, 116-117)

TEAK NATURAL GREY
W220 X D105 X H57 CM



CUSHION SET LOUNGE MAGNUS SMALL
G428S-KBASICQD / KLIMOQD / KNELOUTQD /
KNELOUTLUXQD / KTEXTOUTQD*

W180 X D95 X H17 CM
W175 X D18 X H32 CM



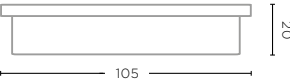
CUSHION SET LOUNGE MAGNUS LARGE
G428L-KBASICQD / KLIMOQD / KNELOUTQD /
KNELOUTLUXQD / KTEXTOUTQD* (P. 114-115, 116-117)

W220 X D95 X H17 CM
W175 X D18 X H32 CM



OTTOMAN MAGNUS
G429-NAT (P. 115, 116-117)

TEAK NATURAL GREY
W105 X D105 X H20 CM



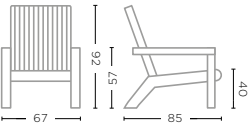
CUSHION OTTOMAN MAGNUS
G429-KBASICQD / KLIMOQD / KNELOUTQD /
KNELOUTLUXQD / KTEXTOUTQD* (P. 115, 116-117)

W105 X D105 X H17 CM



EASY CHAIR ORSO
G547E-NAT (P. 127)

TEAK NATURAL GREY
W67 X D85 X H92 CM



CUSHION EASY CHAIR ORSO
G547E-KBASICQD / KLIMOQD / KNELOUTQD /
KNELOUTLUXQD / KTEXTOUTQD*

W55 X D52 X H5 CM



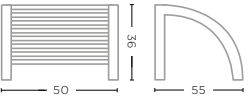
CUSHION HEADREST EASY CHAIR ORSO
G547E-HEAD-KBASICQD / KLIMOQD / KNELOUTQD /
KNELOUTLUXQD / KTEXTOUTQD*

W50 X D10 X H14 CM



FOOTREST ORSO
G547E-FOOT-NAT (P. 127)

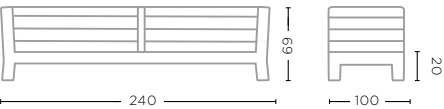
TEAK NATURAL GREY
W50 X D55 X H36 CM





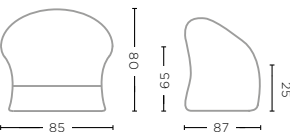
SOFA MIA 3-SEATER
G334-NAT (P. 102-103, 110)

TEAK NATURAL GREY
W240 X D100 X H69 CM



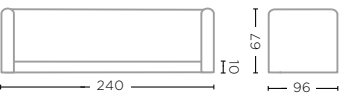
EASY CHAIR FELINE
G673-CLR-PE (P. 98-99, 100-101)

CL PE WICKER NATURAL
W85 X D87 X H80 CM



SOFA DORAN
G421-CLR-PE (P. 118-119)

CL PE WICKER NATURAL
W240 X D96 X H67 CM



SUNLOUNGER LISA (INCL. WHEELS)
G404-PE-AW (P. 132-133)

TEAK NATURAL GREY / PE WICKER ANTIQUE WEED
L209 X W66 X H35 CM



DOUBLE SUNLOUNGER LISA (INCL. WHEELS)
G404D-PE-AW (P. 134-135)

TEAK NATURAL GREY / PE WICKER ANTIQUE WEED
L210 X W132 X H35 CM



CUSHION SET SOFA MIA 3-SEATER
G334-KBASICQD / KLIMOQD / KNELOUTQD /
KNELOUTLUXQD / KTEXTOUTQD* (P. 102-103, 110)

W210 X D86 X H25 CM
W210 X D21 X H32 CM



CUSHION SET EASY CHAIR FELINE
G673-KBASICQD / KLIMOQD / KNELOUTQD /
KNELOUTLUXQD / KTEXTOUTQD* (P. 98-99, 100-101)

W61,5 X D65 X H13 CM
W53,5 X D13 X H40 CM



CUSHION SET SOFA DORAN
G421-KBASICQD / KLIMOQD / KNELOUTQD /
KNELOUTLUXQD / KTEXTOUTQD* (P. 118-119)

W200 X D78 X H32 CM
W200 X D22 X H34 CM



CUSHION SUNLOUNGER LISA
G404-KBASICQD / KLIMOQD / KNELOUTQD /
KNELOUTLUXQD / KTEXTOUTQD* (P. 132-133)

L204 X W57 X H5 CM



2X SINGLE CUSHION SUNLOUNGER LISA
G404-KBASICQD / KLIMOQD / KNELOUTQD /
KNELOUTLUXQD / KTEXTOUTQD* (P. 134-135)

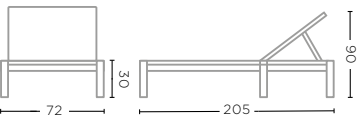
2X L204 X W57 X H5 CM

Two single-cushion Lisa sunloungers required



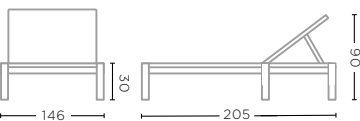
SUNLOUNGER MIEKE (INCL. WHEELS)
G656-PE-NAT (P. 138)

TEAK NATURAL GREY / PE WICKER SAND
L205 X W72 X H30 CM



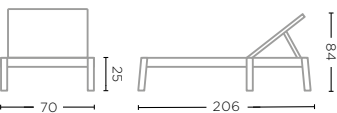
DOUBLE SUNLOUNGER MIEKE (INCL. WHEELS)
G656D-PE-NAT (P. 139, 140-141, 142-143, 144-145)

TEAK NATURAL GREY / PE WICKER SAND
L205 X W146 X H30 CM



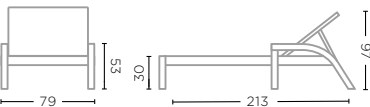
SUNNY BED COPENHAGUE (INCL. WHEELS)
G244-NAT (P. 136-137)

TEAK NATURAL GREY
L206 X W70 X H25 CM



SUNBED FAYE (INCL. WHEELS)
G794-NAT (P. 146-147, 148-149)

TEAK NATURAL GREY
L213 X W79 X H30 CM



CUSHION SUNLOUNGER MIEKE
G656-KBASICQD / KLIMOQD / KNELOUTQD /
KNELOUTLUXQD / KTEXTOUTQD* (P. 138)

L202 X W73 X H9,5 CM



CUSHION DOUBLE SUNLOUNGER MIEKE
G656D-KBASICQD / KLIMOQD / KNELOUTQD /
KNELOUTLUXQD / KTEXTOUTQD* (P. 139, 140-141, 142-143, 144-145)

L202 X W146 X H9,5 CM



CUSHION SUNNY BED COPENHAGUE
G244-KBASICQD / KLIMOQD / KNELOUTQD /
KNELOUTLUXQD / KTEXTOUTQD* (P. 136-137)

L202 X W70 X H12 CM



CUSHION SUNBED FAYE (INCL. HEADREST)
G794-KBASICQD / KLIMOQD / KNELOUTQD /
KNELOUTLUXQD / KTEXTOUTQD* (P. 146-147, 148-149)

L212 X W67 X H7 CM
W47 X D5 X H26 CM



SUNLOUNGER JONES (INCL. WHEELS)
G422-CLR-PE (P. 150)

CL PE WICKER NATURAL
L205 X W80 X H35 CM



COFEE TABLE / SUNBED EDGE
G802-NAT (P. 124-125, 130-131)

TEAK NATURAL GREY
L200 X W85 X H22 CM



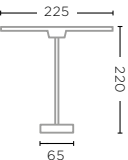
TOWEL RACK FINN
G633-NAT (P. 156-157)

TEAK NATURAL GREY
W85 X D35 X H115 CM



PARASOL YASMIN
G492-CLR-PE (P. 150-151)

CL PE WICKER NATURAL /
TEAK & CONCRETE
L225 X W225 X H220 CM



CUSHION SUNLOUNGER JONES
G422-KBASICQD / KLIMOQD / KNELOUTQD /
KNELOUTLUXQD / KTEXTOUTQD* (P. 150)

L195 X W66 X H9 CM



CUSHION SET SUNBED EDGE
G802-KBASICQD / KLIMOQD / KNELOUTQD /
KNELOUTLUXQD / KTEXTOUTQD* (P. 130-131)

L200 X W85 X H20 CM
W80 X D32,5 X H22 CM



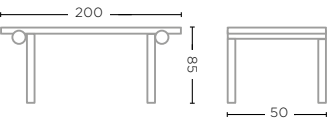
RACK ROLF
G666-NAT (P. 48-49)

TEAK NATURAL GREY
W120 X D40 X H150 CM



CONSOLE ROLF
G665-NAT (P. 106-107, 155)

TEAK NATURAL GREY
W200 X D50 X H85 CM

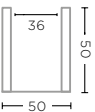


PLANTERS - TECHNICAL SPECIFICATIONS



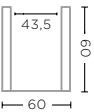
SQUARE PLANTER FERDY 50
G268-NAT (P. 173)

TEAK NATURAL GREY
W50 X D50 X H50 CM



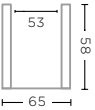
SQUARE PLANTER FERDY 60
G267-NAT

TEAK NATURAL GREY
W60 X D60 X H60 CM



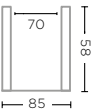
HEXAGON PLANTER LOGAN LOW SMALL
G659-NAT (P. 171)

TEAK NATURAL GREY
Ø65 X H58 CM



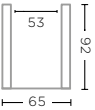
HEXAGON PLANTER LOGAN LOW LARGE
G660-NAT (P. 171)

TEAK NATURAL GREY
Ø85 X H58 CM



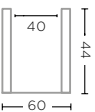
HEXAGON PLANTER LOGAN HIGH
G661-NAT (P. 171)

TEAK NATURAL GREY
Ø65 X H92 CM



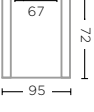
PLANTER BASKET HENDRIK SMALL
G526S-CLR

CL RATTAN
Ø60 X H44 CM



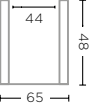
PLANTER BASKET HENDRIK LARGE
G526L-CLR (P. 168)

CL RATTAN
Ø95 X H72 CM



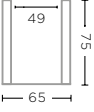
PLANTER BASKET NELL SMALL
G525S-CLR (P. 166)

CL RATTAN
Ø65 X H48 CM



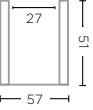
PLANTER BASKET NELL LARGE
G525L-CLR (P. 166)

CL RATTAN
Ø65 X H75 CM



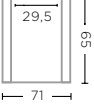
PLANTER BASKET APPLE SMALL
G780S-CLR (P. 172)

CL RATTAN
Ø57 X H51 CM



PLANTER BASKET APPLE LARGE
G780L-CLR (P. 172)

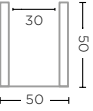
CL RATTAN
Ø71 X H65 CM



PLANTER BASKET NELSON SMALL
G677S-CL

CL RATTAN DARK
Ø50 X H50 CM

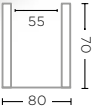
Unpeeled rattan makes the basket darker coloured and stronger.



PLANTER BASKET NELSON LARGE
G677L-CL (P. 170)

CL RATTAN DARK
Ø80 X H70 CM

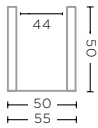
Unpeeled rattan makes the basket darker coloured and stronger.





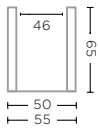
PLANTER BASKET JULIA SMALL
G309S-CLR (P. 167)

CL RATTAN
Ø50-55 X H50 CM



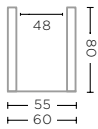
PLANTER BASKET JULIA MEDIUM
G309M-CLR (P. 38, 167)

CL RATTAN
Ø50-55 X H65 CM



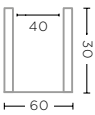
PLANTER BASKET JULIA LARGE
G309L-CLR (P. 167)

CL RATTAN
Ø55-60 X H80 CM



HANGING BASKET LUCA OUTDOOR
G527-CLR (P. 169)

CL RATTAN
Ø60 X H30 CM



HANGING LAMP DEREK OUTDOOR INCL. CANOPY
G528-CLR (P. 169)

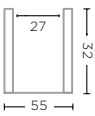
CL RATTAN
Ø63 X H54 CM



HANGING BASKET DISC
G716-CL (P. 106, 109, 154-155)

CL RATTAN DARK
Ø55 X H32 CM

Unpeeled rattan makes the basket darker coloured and stronger.



HANGING LAMP DISC SMALL
G715S-CL (P. 106, 109, 154-155)

CL RATTAN DARK
Ø47 X H50 CM

HANGING LAMP DISC LARGE
G715L-CL (P. 106, 109, 154-155)

CL RATTAN DARK
Ø52 X H60 CM

Unpeeled rattan makes the basket darker coloured and stronger.



SQUARE SOFT POUF SMALL WITHOUT PIPING
G152S-NP-KLIMOQD / KNELOUTQD / KNELOUTLUXQD / KTEXTOUTQD* (P. 20, 160)

L55 X W55 X H30 CM

SQUARE SOFT POUF LARGE WITHOUT PIPING
G152L-NP-KLIMOQD / KNELOUTQD / KNELOUTLUXQD / KTEXTOUTQD* (P. 20, 160)

L60 X W60 X H40 CM



ROUND SOFT POUF SMALL WITH PIPING
G153S-KLIMOQD / KNELOUTQD / KNELOUTLUXQD / KTEXTOUTQD*

Ø55 X H30 CM

ROUND SOFT POUF LARGE WITH PIPING
G153L-KLIMOQD / KNELOUTQD / KNELOUTLUXQD / KTEXTOUTQD*

Ø60 X H40 CM



SQUARE HARD POUF WITH FLUFFY PIPING
G559-KLIMOQD / KNELOUTQD / KNELOUTLUXQD / KTEXTOUTQD* (P. 133)

L42 X W42 X H35 CM

SQUARE SOFT POUF WITH FLUFFY PIPING
G560-KLIMOQD / KNELOUTQD / KNELOUTLUXQD / KTEXTOUTQD*

L55 X W55 X H42 CM



SQUARE POUF / SIDETABLE
G387-KLIMOQD / KNELOUTQD / KNELOUTLUXQD / KTEXTOUTQD* (P. 92, 102, 161)

L42 X W42 X H35 CM



STONE TOP ZENO LARGE
G766S-LAVASTONE (P. 133)

LAVASTONE
L40 X W40 X H2,5 - 3,5 CM

Optional for square pouf G559 & G387.

DECO CUSHIONS - TECHNICAL SPECIFICATIONS



DECO CUSHION 40X40

G155-KBASIC / KLIMO /
KNELOUT / KNELOUTLUX /
KTEXTOUT*

L40 X W40 CM



DECO CUSHION 50X50

G156-KBASIC / KLIMO /
KNELOUT / KNELOUTLUX /
KTEXTOUT*

L50 X W50 CM



DECO CUSHION 45X45

G1561-KBASIC / KLIMO /
KNELOUT / KNELOUTLUX /
KTEXTOUT*

L45 X W45 CM



DECO CUSHION 55X55

G158-KBASIC / KLIMO /
KNELOUT / KNELOUTLUX /
KTEXTOUT*

L55 X W55 CM



DECO CUSHION 60X60

G154-KBASIC / KLIMO /
KNELOUT / KNELOUTLUX /
KTEXTOUT*

L60 X W60 CM



DECO CUSHION 60X40

G157-KBASIC / KLIMO /
KNELOUT / KNELOUTLUX /
KTEXTOUT*

L60 X W40 CM



DECO CUSHION 60X25

G1572-KBASIC / KLIMO /
KNELOUT / KNELOUTLUX /
KTEXTOUT*

L60 X W25 CM



DECO CUSHION 80X60

G1581-KBASIC / KLIMO /
KNELOUT / KNELOUTLUX /
KTEXTOUT*

L80 X W60 CM



DECO CUSHION 80X35

G1571-KBASIC / KLIMO /
KNELOUT / KNELOUTLUX /
KTEXTOUT*

L80 X W35 CM



CUSHION HEADY

G672-KBASICQD / KLIMOQD /
KNELOUTQD / KNELOUTLUXQD /
KTEXTOUTQD*
(P. 138-139, 140-141, 143, 144-145)

W41 X D54 X H10 CM

DISCOVER OUR DECO CUSHIONS ON PAGES 90, 93-95, 102-111, 116, 118-119, 124-126, 134-135, 161, 164-165.





CARE & USE

We believe in the beauty of nature and the wonderful effect the passage of time has on our collection. Yet some regular maintenance of your furniture and decorative items is recommended.

Our Care & Use manual offers you useful information on how to keep your GOMMAIRE products in optimal condition. You can find the manual on the following pages or on our website, where videos clarify the instructions further. Use the QR code below to access the designated page or go directly to gommaire.com/care-and-use.

Should you have additional questions, please contact your local GOMMAIRE retailer or our Customer Service Department.



[GOMMAIRE.COM/CARE-AND-USE](https://gommaire.com/care-and-use)

OUTDOOR WOOD COLLECTION

The GOMMAIRE outdoor wood collection is made of qualitative teak wood and teak root structures. The wood has not been treated to prevent staining, colour changes or weathering. The following information will help you understand, maintain, and protect your furniture.

Solid teak wood is a natural material with its own characteristics and variations in structure and colour that can change over time, especially exposed to daylight. Furthermore, wood is quite sensitive to large differences in humidity and temperature. Therefore, we recommend keeping both conditions as stable as possible. It is always a possibility that cracks, fissures and wood bendings could appear. However, the natural changes that occur are not only desirable but also align perfectly with the core philosophy of GOMMAIRE. Moreover, we do offer some maintenance products to add extra protection and optimise the lifespan of our wooden items.

When moving the wooden furniture around, make sure to always lift and never slide it to prevent breakage. Furniture should always be placed on a flat surface. In situations where achieving a perfectly level surface is not feasible, our tables and side tables come equipped with adjustable furniture levellers





GENERAL MAINTENANCE

Start with using a damp cloth to remove dust and any white residue left by the packaging and transport.

The surface of the wood can be cleaned with water and natural soap at any given time. Always make sure to treat the entire surface, as local treatments will remain visible. The GOMMAIRE TEAK CLEANER can be applied on teak outdoor furniture to remove the dirt left by regular usage or air pollution. For surface stains that do not respond to the previously mentioned instructions, our G-SPOTSTOP can provide further assistance in reducing and minimising them.

Lastly, to help the longevity of your teak furniture and prevent certain stains, you can apply a protective layer of our GOMMAIRE TEAK PROTECTOR. Bear in mind that it is still highly recommended to remove any stains as quickly as possible to prevent them from soaking into the wood.

On the following pages, you will find more detailed information about the maintenance products and how to use them.



GENERAL STEPS BEFORE APPLYING ANY OF THE PRODUCTS

The products are to be used during dry weather and temperatures between 15°-30° Celsius. Avoid direct sunlight. Clean the surface with a damp cloth, then make sure it is completely dry before applying the product. The humidity of the wood should be under 12%. You can remove any raised wood fibres with a scrubbing pad.

Always be careful using the following products. When applied incorrectly, undesired discolourations and changes in the wood may appear. Place a protective layer in between your furniture piece and the floor to protect it from accidental leakage or spills, these might leave behind stains that cannot be removed. If you are unsure about a product, we advise you to test on a non-visible spot on your furniture piece.

G-SPOTSTOP

For more stubborn stains we offer G-SPOTSTOP. As with any stain, it is important to remove them as soon as possible. Prompt removal of stains is crucial for optimal results. Delaying the removal until the following day may reduce its effectiveness. Even if your furniture piece is treated with the G-PROTECTOR.

How to use

Before usage, shake the spray bottle to ensure the proper mixture. Then spray the G-SPOTSTOP approx. 20 cm above the stain. Allow the product to sit for a few minutes. To remove the stain, gently brush it out using a brush or lightly dab it with a cloth. Please avoid rubbing with the cloth, as it causes the stain to absorb into the fibres of the wood.

TEAK CLEANER

Use the G-CLEANER when your natural grey outdoor furniture needs a general cleaning, for example when the wood is weathered or slightly discoloured. Depending on the inherent base colour of the wood, this product will enhance those tones. That is why the wood may develop a pink, yellow or orange hue after cleaning. It is important to note that this gradual shift in colour is a normal occurrence that would naturally take place over time.

How to use

Begin by gently rinsing the entire piece with a hose, followed by the removal of any residual water using a soft cloth. Spray the G-CLEANER on the entire surface, allowing it to settle for approximately 10 minutes. Employ a scouring pad, moving in the direction of the wood grain, to gently cleanse the piece. Subsequently, ensure a thorough rinsing to remove all remnants. Additionally, utilise a cloth to carefully eliminate excess water. Keep your furniture piece out of direct sunlight to dry. If the outcome does not meet your expectations once the piece has dried, feel free to repeat this treatment.

TEAK PROTECTOR

G-PROTECTOR is a water-based teak protector that helps shield the surface against water-based stains and slows down the natural greening process. For those periods when your furniture piece remains unused, we highly recommend applying this product. However, it's important to note that G-PROTECTOR is not full coverage and does not prevent the natural ageing or greying process that occurs over time. To maximise protection, we recommend first using our TEAK CLEANER.

How to use

For new furniture, we recommend following these steps. Firstly, gently wipe the entire surface with a lightly damp cloth and allow it to dry for one week before applying the product. This waiting period ensures the best results.

When dealing with older furniture, we suggest using our teak cleaner to cleanse the entire piece beforehand. If the cleaned teak appears rough, gently refine the surface using a scrubbing pad. The waiting period is not necessary after this.

Before applying the teak protector, make sure the entire surface is completely dry and free from dust or dirt particles. Shake before use, then apply a thin layer of teak protector with a soft, lint-free cloth or paintbrush. Wait for a couple of hours before applying a second thin layer once the wood is thoroughly dried. Then again leave the product to dry fully so it accomplishes its optimal effect.

Frequent reapplication of this treatment is necessary due to its water-based nature. To assess the level of protection on the wood, perform a simple water test. If the water forms beads on the surface without being absorbed, it indicates sufficient protection. However, if the water is absorbed by the wood, it indicates that the protection has worn off and reapplication is required.



NATURAL RATTAN

The CL rattan baskets and furniture pieces are made of rattan vines which are woven together. When exposed to the elements outdoors, this material develops a charming weathered appearance, adding to its allure. However, the lifespan is limited when exposed to certain weather conditions. Therefore, the CL rattan collection should be considered semi-outdoor resistant. This means that these pieces can be used outdoors in spring and summer months. The rest of the year, they should be placed indoors or under a covered patio.

To ensure a longer lifetime, we advise cleaning the rattan with a brown soap and water solution each year to maintain flexibility. This brown soap or any kind of natural soap can also be used for regular cleaning. Afterward, we recommend treating the rattan with our GOMMAIRE Teak Protector on a yearly basis, making the material more water-repellent. You can use this product in a spray bottle to easily reach the entire surface.

Due to the 100% natural characteristics of the material and the artisanal production process, the colour, thickness and dimensions may vary between pieces. Similar to wood, natural rattan is a living product. Climate changes, such as temperature and humidity, can make the rattan move, lose its shape, or sometimes pop out. Should this happen, the loose rattan stem can be woven back into place or cut off. If you have any more questions about the material, please contact our service department.

OUTDOOR FABRICS

The GOMMAIRE collection showcases top-tier outdoor fabrics renowned for their exceptional quality, all of European origin. They are meticulously woven from the finest quality yarns such as polypropylene and acrylic. With their natural touch and water-repellent, colour-fast properties, these fabrics offer both style and practicality. All our cushions are manufactured with quick-dry foam, making them ideal for outdoor use.

The following information will help you understand, maintain, and protect your outdoor fabrics.

GENERAL MAINTENANCE

Outdoor cushions can be placed outside during the outdoor season. However, we recommend bringing them inside when you don't use them during longer periods of humid or wet weather. If you cannot store them somewhere dry, we recommend placing the cushions upright against the frame so that the water can run off and the cushions dry more easily.

Untreated teak furniture may release a reddish-brown substance known as "teak oil" when exposed to higher temperatures, resulting in brown discoloration that can be observed on the bottom of light-coloured cushions. These teak oil stains can be challenging to remove. Additionally, during the initial months before the teak wood has turned grey, it is advisable to only place the cushions on the teak wood frames when in use.

Cushion covers can be easily removed for cleaning. You can wipe down the fabrics with a damp cloth and mild soap at any given time. Make sure to clean the entire cushion instead of one concentrated area, to avoid any potential colour differences. And if there is any doubt, please test the solution first on a non-visible place on your cushion. After cleaning, make sure to rinse with water thoroughly so the soap is completely removed.

For more stubborn stains, we recommend washing them at 30°C with closed zippers. Afterwards, it is best to place the cushion cover slightly damp over the cushion or furniture instead of using the dryer to prevent shrinkage and deformation. Except for our Knelout/ Kneloutlux fabrics that include a dirt-resistant finish that is activated by heat. These fabrics can only be left in the dryer for 15 minutes max.



For tips on stain removal and other maintenance advice, please scan the QR code below and find all information on our indoor and outdoor fabrics.

ALSO AVAILABLE



INDOOR 2025



DECORATION & ACCESSORIES 2025

GENERAL TERMS & CONDITIONS OF GOMMAIRE NV

Article 1

The general terms and conditions of Gommaire NV always take precedence over those of the customer, and constitute an integral part of the agreement, even if the order and/or general terms and conditions of the customer would state otherwise. The general terms and conditions of the customer are not enforceable against Gommaire NV, regardless of their designation and/or whether they (later) appear on order forms, order confirmations or other documents of the customer.

Article 2

2.1 Placing an order is always an unilateral offer to contract on the part of the customer, even if this order is in response to an offer by Gommaire NV and/or is indicated on an order form (PO) of Gommaire NV and/or signed by an employee or representative (agent) of Gommaire NV. Orders as well as any other obligations recorded/entered into by its agents, representatives and/or employees shall only be deemed accepted by Gommaire NV after written confirmation of acceptance (signature) by the management of Gommaire NV, which is not required to justify a possible refusal.

2.2 Photographs, drawings, illustrations, dimensions, samples (among others of colours, materials), technical specifications, and the like are provided by Gommaire NV for information purposes only and are approximate indications for which Gommaire NV is liable only if it did not take all reasonable care due to serious or deliberate error.

Article 3

3.1 The delivery dates specified on offers, (final) order confirmations/acceptances and other documents of Gommaire NV are only indicative and not strictly applicable. The customer may in no circumstances invoke non-compliance with stated deadlines to claim damages or dissolution of the agreement, unless the lateness is exclusively the result of gross negligence or wilful misconduct on the part of Gommaire NV.

3.2 The goods are delivered ex warehouse, with the risk transferring to the customer as soon as they leave the warehouse, even if Gommaire NV handles transportation and/or insurance (on behalf of the customer).

3.3 The customer commits himself with respect to the goods purchased from Gommaire NV :

- (I) that he will not advertise and/or commercialize the same via online platforms as Amazon.com, Bol.com (not limitative examples).
- (II) that he will only advertise the same on his own website with the agreement of Gommaire NV and in compliance with the directives of the latter, which may from time to time be adapted with prior notice.
- (III) that he will never commercialize the same via his own website.

Article 4

The customer acknowledges that Gommaire NV is the exclusive owner of all copyrights, creations and/or any other intellectual property rights related to the delivered goods, materials and services.

Article 5

5.1 All invoices issued by Gommaire NV are payable in cash unless different payment terms are accepted by Gommaire NV. In any case, all invoices issued by Gommaire NV must be paid in full before delivery/pick-up.

5.2 Payments shall be made to Gommaire NV at Antwerp (B). Any amount that is not paid to Gommaire NV in a timely manner will by operation of law and without prior notice be increased by fixed irreducible damage compensation equal to 10% of the outstanding amount, as well as by default interest equal to the interest rate foreseen in the Act of 2 August 2002 on combating late payments in commercial transactions calculated on the amount owed.

5.3 The late payment of one amount to Gommaire NV shall by operation of law and without notice result in all outstanding, not yet payable amounts owed by the customer in question becoming immediately due and payable in full, and Gommaire NV, without being obliged to pay any damage compensation, shall have the right to suspend further delivery and/or production for the customer in question until the latter has settled all outstanding amounts, and pending orders have been paid in advance.

5.4 In addition, in the case of late payment, Gommaire NV has by operation of law the right to dissolve the agreement without prior notice at the expense of the customer. This dissolution takes place by notification by registered letter. The dissolution takes effect on the date indicated on the proof of posting of the registered letter.

5.5 In the case of dissolution of an agreement by Gommaire NV at the expense of the customer, or in the case of unilateral breach of an agreement

by the customer before the delivery of the goods, materials and/or services in question, the customer shall automatically and without prior notice owe Gommaire NV a fixed damage compensation of 50% of the agreed price, without prejudice to the right of Gommaire NV to demonstrate and claim greater compensation. After delivery, this damage compensation amounts to 100% of the agreed price, without prejudice to the right of Gommaire NV to demonstrate and claim greater compensation. The parties agree that the above damage compensation constitutes the actual minimum damage suffered by Gommaire NV.

Article 6

Any dispute concerning an invoice sent, must be notified to Gommaire NV by registered mail within eight days after the invoice date, under penalty of forfeiture.

Article 7

7.1 Verification of (i) the conformity of the delivered goods, materials and/or services with respect to quantity, quality, characteristics, etc. , as well as (ii) inspection for apparent/visible defects in the delivered goods, materials and/or services shall take place at the time of the pick-up/delivery/performance. The corresponding complaints must, under penalty of forfeiture, be expressly stated on the pick-up slip/packing slip/service order and subsequently confirmed by registered letter to Gommaire NV within 24 hours after pick-up/delivery/performance. The partial use or resale of the delivered goods or services also implies acceptance of the entirety. Defects in a part thereof do not entitle the customer to reject the entire order.

7.2 Each complaint relating to a non-apparent defect must, under penalty of forfeiture, be sent to Gommaire NV by registered mail within eight days after discovery, and no later than one year from the pick-up/delivery/performance.

7.3 Within the usual tolerance limits for the sector, deviations in colour, materials, grain, dimensions, look, and the like [including those that are due to natural (raw) materials and/or modified production techniques on the part of the manufacturer] are allowed and shall not constitute grounds for (partial) refusal of the delivery, nor constitute grounds to claim damages and/or (partial) non-payment of the price.

7.4 If a complaint is substantiated, Gommaire NV – at its option – shall resolve the complaint by repair and/or replacement of the non-conforming part of the delivery, unless the end customer opts for a corresponding price reduction after return of the non-compliant part. Filing a complaint for any reason, even using the prescribed forms and within the prescribed deadlines, does not relieve the customer of its obligation to promptly pay by the due date. Except for its warranty obligations indicated above, Gommaire NV is not liable for direct and/or indirect damage (including loss of profit) resulting from defects in the goods sold and/or the services provided, except in cases of serious or deliberate error on its part.

Article 8

The delivered goods, materials and services remain by operation of law fully owned by Gommaire NV until receipt by the latter of the full price of the goods, materials and services, eventually increased with any applicable interest, damage compensation and costs. As long as Gommaire NV retains ownership, the delivered goods, materials and services may never be used by the customer as a pledge or deposit for a claim of a third party.

Article 9

If the customer suffers loss or damage as a result of an error by Gommaire NV for which its liability is not excluded, the latter shall be obliged to pay compensation in the amount of the invoice in question.

Article 10

The possible invalidity of one or more provisions of these terms and conditions shall not affect the validity of the agreement, these general terms and conditions as such, or the other clauses contained therein. The parties undertake to immediately replace in good faith any invalid clause by another clause that is as close as possible to the intention of the clause being replaced.

Article 11

In case of dispute, only the justice of the peace and courts of the registered office of Gommaire NV have jurisdiction. Only Belgian law is applicable to the agreements and disputes between the parties, with exception/exclusion of Belgian international private law . The application of the Vienna Convention on contracts for the international sale of goods is also explicitly excluded.



Schijnpoortweg 121
2170 Antwerp Belgium

info@gommaire.com
www.gommaire.com



All rights reserved © Gommaire NV

